

FRONT PARTS

Aftermarket
Parts Book 2025



WHO WE ARE.

Motion delivers a world-class customer-first approach to everything we do. This has firmly established our business as the leader in the market, providing excellence and expertise in industrial products, solutions and services.

For more than 100 years we have been a feature in the Australian industrial landscape giving customers unmatched products and service through an integrated network of branches, workshops and service centres.

We have an ongoing commitment to invest in our people, facilities, IT and systems to ensure we can continue to offer a broad ranging and premium level of engineering design, servicing and turnkey projects to our customers across Australia.

We are committed and proud to keep our customers in motion, every day of the year.

“WE KEEP THE WORLD MOVING”



CONTENTS

Aftermarket Parts Suitable for **CASE, MACDON, NEW HOLLAND** 4

Draper Belt & Accessories	4
Draper Rollers, shafts & Accessories	6
Multi Couplers & Accessories	10
Knife Guards, Hold Downs	11
Complete Knives	14
Knife Sections, Hardware & Overlap Kits	18
Knife Drives & Parts	22
Retractable Finger & Reel Parts	24
Skid Plates	27

Aftermarket Parts Suitable for **JOHN DEERE** 30

Draper Belt & Accessories	30
Draper Rollers, shafts & Accessories	31
Multi Couplers & Accessories	34
Knife Guards & Hold downs	36
Complete Knives	37
Knife Sections, Hardware & Overlap Kits	39
Knife Drives & Parts	41
Retractable Finger & Reel Parts	42
Stainless Steel Skid Plates	44

Aftermarket Parts Suitable for **RETRODRUMS** 45

Macdon, John Deere, Honeybee, Midwest And CHN Fronts	45
---	----

Aftermarket Parts Suitable for **CANOLA ROTARY KNIVES** 49

Rotary Knives	49
---------------	----

Aftermarket Parts Suitable for **VERTICAL KNIVES** 50

Australian Made Canola Vertical knives	50
--	----

Aftermarket Parts Suitable for **HONEYBEE** 51

Parts & Accessories	51
---------------------	----

Aftermarket Parts Suitable for **CANOLA** 57

Pick Up Belts & Parts	57
-----------------------	----

Aftermarket Parts Suitable for **MIDWEST** 60

Parts & Accessories	60
---------------------	----

Aftermarket Parts Suitable for **AGCO** 63

Draper Belts & Accessories	63
----------------------------	----

AGRICULTURAL AND FARM SIGNAGE 64

Safety & Warning Signs	64
------------------------	----



DRAPER BELT 41.6" SINGLE V

BSCAG-MD41.6SV

- Case 2142 2152 2162
- NH 84C 83C 86C
- Macdon D50 D60 D65 FD75 D1
- JD 400 series



JOINER STEEL TUBE CONNECTOR 39.8IN 11 HOLE

A-1002377

- Case 2142 2152 2162
- NH 84C 83C 86C
- Macdon D50 D60 D65 FD75 D1
- JD 400 series



DRAPER BELT 41.6" DOUBLE V

20021499

- Case 2142 2152 2162
- NH 84C 83C 86C
- Macdon D50 D60 D65 FD75 D1
- JD 400 series



DRAPER BELT JOINER SUIT DOUBLE VEE [20021499] 38.78" [10 HOLE]

DRAPJOIN-41.6

- Macdon 960 962 963 970 972 973 974 D50 D60 D65 FD70 FD75 D130 D135 D140 D145 FD130 FD135 FD140 FD145 Case 1040 1042 1052 2042 2052 2062 2142 2152 2162 New Holland 82C 83C 84C 86C



MACDON JOINER 47.77 12 HOLE

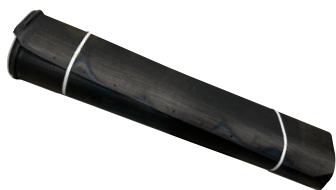
B1011511



DRAPER BELT, CENTER; 78.5" X 63.46, STRAIGHT CLEATS

A-1010877

- Case 2142 2152 2162
- NH 84C 83C 86C
- Macdon D50 D60 D65 FD75 D1
- JD 400 series



CENTRE DRAPER MAT

A-1003467

- Case 1042 1052 2042 2052
- Macdon 962 970 972 973



38.4" X 97" CENTRE DRAPER BELT WITH JOINER

BSCAG-1003455

- Case 1042 1052 2042 2052
- Macdon 962 970 972 973



BW SWATHER REPAIR KIT

A-1001970



42" X 50.24" CENTRE FEED BELT

A-1011923

- 3152 (2 rqd)



42" X 60.24" CENTRE FEED BELT

B1011924

- 3152 3162 (1 rqd)



CNH V-G DRAPER BELT 41.6IN X/FT

B1011274



CENTRE FEED BELT 41.75IN X 85.75IN

B1003452

- MACDON 960
- CASE 1040



CENTRE DRAPER MAT 55.9X9IN

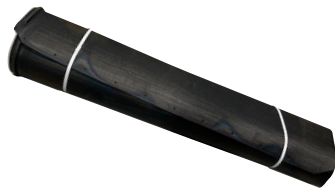
A-1003456

- Macdon 973, 974



MACDON 49.6 DRAPER SIDE V-GUIDE

B1013895



CENTRE BELT 54.9 X 85.75IN CASE MACDON

B1003453WCC



DRAPER BELT 41.5IN MACDON FLAT BACKED

B1008785WCC



CENTRE DRAPER ROLLER SEAL

CR11352

- Case 1042 1052 2142 2152 2162
- NH 84C 83C 86C
- Macdon 960 970 972 D50 D60 D65 FD75 D1
- JD 400 series



CENTRE DRAPER ROLLER LSTO LAB SEAL

25X52LSTO

- Case 2142 2152 2162
- NH 84C 83C 86C
- Macdon D50 D60 D65 FD75 D1
- JD 400 series



DRAPER ROLLER BEARINGS

PW25520042CSECO

- Case 2142 2152 2162
- NH 84C 83C 86C
- Macdon D50 D60 D65 FD75 D1
- JD 400 series



DRAPER ROLLER PIN ONLY

BSCAG-11

- D50 D60 D65 FD70 FD75 FD130 FD135 FD140 FD145 2142 2152 2162



DRAPER ROLLER BEARING PIN ASSEMBLY

BSCAG-165735

- Case 2142 2152 2162
- NH 84C 83C 86C
- Macdon D50 D60 D65 FD75 D1
- JD 400 series



Double Keyway

CASE / MACDON DRAPER BELT DRIVE ROLLER

BSCAG-174694

- D50, D60, D65, FD70, FD75, FD130, FD135, FD140, FD145
- Case 2142, 2152, 2162
- New Holland 82C, 83C, 86C



Double Keyway

DRAPER DRIVE BELT ROLLER LAGGED

BSCAG-174694L

- D50 D60 D65 FD70 FD75 FD130 FD135 FD140 FD145 2142 2152 2162



Double Keyway

DRAPER DRIVE BELT ROLLER TUNGSTEN

BSCAG-255410

- D50 D60 D65 FD70 FD75 FD130 FD135 FD140 FD145 2142 2152 2162



CASE / MACDON DRAPER BELT IDLER ROLLER [NO BEARINGS OR PINS]

BSCAG-174714

- D50, D60, D65, FD70, FD75, FD130, FD135, FD140, FD145
- Case 2142, 2152, 2162
- New Holland 82C, 83C, 86C



BSCAG-245122 A&I MACDON DRAPER

BSCAG-245122

- Case 2142 2152 2162
- NH 84C 83C 86C
- Macdon D50 D60 D65 FD75 D1
- JD 400 series



MACDON DRAPER MAT DRIVE ROL LER TUNGSTEN DRIVE RIBS

CM255410L



SIDE ROLLER HYDRAULIC MOTOR

BSCAG-220891

- Case 2142 2152 2162
- NH 84C 83C 86C
- Macdon D50 D60 D65 FD75 D1
- JD 400 series



CENTRE FEED ROLLER BEARINGS

6205LLUC3NTN

- Case 2142 2152 2162
- NH 84C 83C 86C
- Macdon D50 D60 D65 FD75 D1
- JD 400 series



MACDON - 960, 962 CASE - 1040, 1042, 2042

BSCAG-43513

- Case/ Macdon Draper belt drive roller fitted with bearing



MACDON - 960, 962 CASE - 1040, 1042, 2042, 2062

BSCAG-43320

- Case/ Macdon Draper belt Idler roller fitted with bearings



CENTRE FEED IDLER ROLLER 78.5"

BSCAG-156286

- Macdon D50 D60 D65 FD70 FD75
- Case 2142 2152 2152 New Holland 82C 83C 86C



DRAPER DRIVE BELT ROLLER

BSCAG-118013

- 972 973 974 2042 2052 2062



38.4" CENTRE FEED IDLER ROLLER

BSCAG-100201

- 960 962 1040 1042 2042



**CENTRE FEED DRIVE
ROLLER LAGGED**

BSCAG-133891L

- Macdon D50 D60 D65 FD70 FD75
Case 2142 2152 2162 New Holland 82C
83C 86C



**SPLINED DRIVE HUB SUIT
MACDON CASE CENTRE FEED
DRIVE ROLLER**

133891HUB

- Macdon D50 D60 FD70 D65 FD75 D1
FD1 Case 2142 2152 2162 New Holland
82C 83C 86C



**CENTRE FEED IDLER
ROLLER 37.4" MACDON 960
SN>89000 CASE 1040**

40812

- Macdon 960 Case 1040



**CENTRE FEED DRIVE ROLLER
37.4" MACDON 960 PTO
DRIVEN CASE 1040**

40817

- Macdon 960 Case 1040



**CENTRE FEED DRIVE
ROLLER UNLAGGED**

BSCAG-133891

- Macdon D50 D60 D65 FD70 FD75
• Case 2142 2152 2162 New Holland 82C
83C 86C



**MACDON FD2 DRAPER IDLER
ROLLER FM100 D2 FD2**

CM275211



**MACDON FD2 DRAPER DRIVE
ROLLER LAGGED FM200 D2
FD2**

CM319191



**MACDON FD2 CENTRE FEED
DRIVE ROLLER LAGGED
FM200 D2 FD2**

CM347483



**MACDON FD2 CENTRE FEED
IDLER ROLLER FM200 D2 FD2**

CM295770



DRAPER BELT IDLER ROLLER

BSCAG-100081

- 972 973 974 2042 2052 2062



55.9" CENTRE FEED IDLER ROLLER

BSCAG-100383

- CA873 960 962 972 973 974 1040 2042 2052 2062



45" CENTRE FEED IDLER ROLLER

BSCAG-116079

- CA873 972 973 974 2042 2052 2062



38" CENTRE FEED DRIVE ROLLER

BSCAG-123407

- 960 962 963 970 972 973 974 1040 1042 1052 2042 2052 2062



55.9" CENTRE FEED DRIVE ROLLER

BSCAG-123403

- 960 962 963 970 972 973 974 1040 1042 1052 2042 2052 2062



45" CENTRE FEED DRIVE ROLLER

BSCAG-123408

- 960 962 963 970 972 973 974 1040 1042 1052 2042 2052 2062



LH RH DRAPER MOTORS

BSCAG-392739

- MACDON 1042 1052 2042 2052



LH RH DRAPER MOTORS

BSCAG-43010

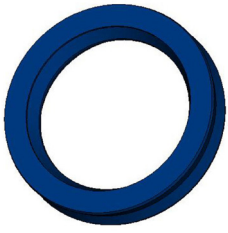
- MACDON 1040



CENTRE FEED DRIVE ROLLER LAGGED SUIT MACDON D1 FD1 FM100 78.5" X 3"

335637

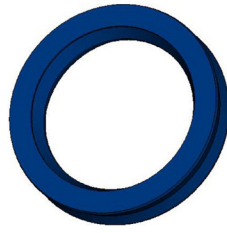
- Macdon D125 D130 D135 D140 D145 FD 125 FD130 FD135 FD140 FD145



**1/4" FASTER MACDON
 CNH SEAL KIT**

A-SKMF14

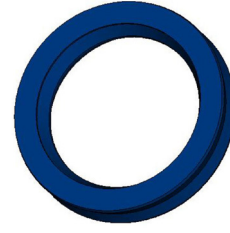
- Case 2142 2152 2162
- NH 84C 83C 86C
- Macdon D50 D60 D65 FD75 D1
- JD 400 series



**3/8" FASTER MACDON
 CNH SEAL KIT**

A-SKMF38

- Case 2142 2152 2162
- NH 84C 83C 86C
- Macdon D50 D60 D65 FD75 D1
- JD 400 series



**1/2" FASTER MACDON
 CNH SEAL**

A-SKMF12

- 2142 2152 2162 84C 83C 86C D50 D65 FD75



**MULTI COUPLER
 FRONT SIDE**

LAN2P5065-5AFC

- Case 2142 2152 2162
- NH 84C 83C 86C
- Macdon D50 D60 D65 FD75 D1
- JD 400 series



**HYDRAULIC COUPLER BLOCK,
 HARVESTER SIDE, SUITS CASE
 IH AND NEW HOLLAND**

LAN3P5065-5EMC

- Suits Header Front Side Suits Header Front Side Case-IH 8010 onwards, New Holland CR & CX Series.



**CNH / MACDON COMBINE
 SIDE**

LANKT3FNP1438SM

- 1/4" coupler with 3/8" ORB [3 x LAN3P5065-5EMC] Hyd. Deck Plates Reel Fore/ AFT



**CNH / MACDON COMBINE
 SIDE**

LANKITFNP38-12

- 3/8" coupler with 1/2" ORB [1 x LAN3P5065-5EMC] Reel Return



CNH / MACDON HEADER SIDE

LANKT2FNB1438SF

- 1/4" coupler with 3/8" ORB [3 x LAN2P5065-5AFC] Hyd. Deck Plates Reel Fore/ AFT



CNH / MACDON HEADER SIDE

KIT2FNB38-12SF

- 3/8" coupler with 1/2" ORB [2 x LAN2P5065-5AFC] Reel Return / Reel Drive



MACDON LH END GUARD

G-118301

- Case 2142 2152 2162
- NH 84C 83C 86C
- Macdon D50 D60 D65 FD75 D1
- JD 400 series



MACDON RH END GUARD

G-118302

- Case 2142 2152 2162
- NH 84C 83C 86C
- Macdon D50 D60 D65 FD75 D1
- JD 400 series



MACDON GUARD

G-118344

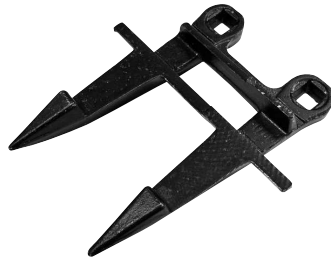
- Case 2142 2152 2162
- NH 84C 83C 86C
- Macdon D50 D60 D65 FD75 D1
- JD 400 series



MACDON GUARD LESS LEDGER HEAD SECTION

G-118345

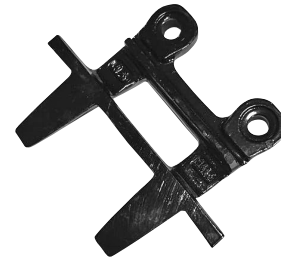
- Case 2142 2152 2162
- NH 84C 83C 86C
- Macdon D50 D60 D65 FD75 D1
- JD 400 series



MACDON CENTER BOTTOM GUARD

G-4338CTR

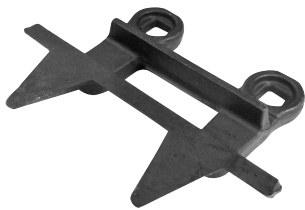
- Case 2142 2152 2162
- NH 84C 83C 86C
- Macdon D50 D60 D65 FD75 D1
- JD 400 series



MACDON CENTER TOP GUARD

G-4344CTR

- Case 2142 2152 2162
- NH 84C 83C 86C
- Macdon D50 D60 D65 FD75 D1
- JD 400 series



BU250 STUB GUARDS (OPTIONAL)

G-250

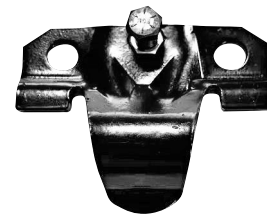
- Case 2142 2152 2162
- NH 84C 83C 86C
- Macdon D50 D60 D65 FD75 D1
- JD 400 series



NO CHOKE GOLD GUARD

A-CR7228

- Case 2142 2152 2162
- NH 84C 83C 86C
- Macdon D50 D60 D65 FD75 D1
- JD 400 series



HOLD DOWN CLIPS ADJUSTABLE

457-054A

- Case 2142 2152 2162
- NH 84C 83C 86C
- Macdon D50 D60 D65 FD75 D1
- JD 400 series



UNIVERSAL LOW ARCH HOLD DOWN CLIP

457-055

- CASE 1010



HOLD DOWN ADJUSTER

457-061

- Case IH 3152 3162



NUT & BOLT ASSEMBLY GUARDS

BSCAG-71645ASSY

- Case 2142 2152 2162
- NH 84C 83C 86C
- Macdon D50 D60 D65 FD75 D1
- JD 400 series



TRIPLE GUARD

G-882

- Case IH 3152 3162



KNIFE DRIVE HEAD GUARD

G-883

- Case IH 3152 3162



STANDARD GUARD

G-973

- Case IH 3152 3162



END GUARD

G-974

- Case IH 3152 3162



CASE 1010 / 1020 KNIFE GUARD

G-299

- 1010/ 1020 Knife Guard



CASE 1010/1020

G-215DH

- Case 1010, 1020



STUB GUARD HOLDDOWN

G-254HEWEB

- Case 2142, 2152, 2162,
- NH 83C, 84C, 86C
- Macdon D50, D60, D65, FD75, JD 400 series



**WEBB 35FT COARSE
 SERRATED SECTIONS W/
 KNIFEHEAD SEGM**

151-308WEB

- Case /Macdon 35FT Coarse Single drive Complete knife assembly with head



**WEBB 35FT FINE SERRATED
 SECTIONS W/KNIFEHEAD
 SEGM**

121-308WEB

- Case /Macdon 35FT Fine Single drive Complete knife assembly with head



**30FT LH FINE SECTION
 COMPLETE KNIFE ASSY WITH
 HEAD**

121-347A

- Case 2142 2152 2162
- NH 84C 83C 86C
- Macdon D50 D60 D65 FD75 D1
- JD 400 series



**30FT RH FINE SECTION
 COMPLETE KNIFE ASSY WITH
 HEAD**

121-347B

- Case 2142 2152 2162
- NH 84C 83C 86C
- Macdon D50 D60 D65 FD75 D1
- JD 400 series



**35FT LH FINE SECTION
 COMPLETE KNIFE ASSY WITH
 HEAD**

121-357A

- Case 2142 2152 2162
- NH 84C 83C 86C
- Macdon D50 D60 D65 FD75 D1
- JD 400 series



**35FT RH FINE SECTION
 COMPLETE KNIFE ASSY WITH
 HEAD**

121-357B

- Case 2142 2152 2162
- NH 84C 83C 86C
- Macdon D50 D60 D65 FD75 D1
- JD 400 series



**40FT LH FINE SECTION
 COMPLETE KNIFE ASSY WITH
 HEAD**

121-367A

- Case 2142 2152 2162
- NH 84C 83C 86C
- Macdon D50 D60 D65 FD75 D1
- JD 400 series



**40FT RH FINE SECTION
 COMPLETE KNIFE ASSY WITH
 HEAD**

121-367B

- Case 2142 2152 2162
- NH 84C 83C 86C
- Macdon D50 D60 D65 FD75 D1
- JD 400 series



**45FT LH FINE SECTION
 COMPLETE KNIFE ASSY WITH
 HEAD**

121-377A

- Case 2142 2152 2162
- NH 84C 83C 86C
- Macdon D50 D60 D65 FD75 D1
- JD 400 series



**45FT RH FINE SECTION
COMPLETE KNIFE ASSY WITH
HEAD**

121-377B

- Case 2142 2152 2162
- NH 84C 83C 86C
- Macdon D50 D60 D65 FD75 D1
- JD 400 series



**30FT LH COARSE SECTION
COMPLETE KNIFE ASSY WITH
HEAD**

151-347A

- Case 2142 2152 2162
- NH 84C 83C 86C
- Macdon D50 D60 D65 FD75 D1
- JD 400 series



**2-1/8" KNIFEBACK SOLID MID
SEGMENT**

451-449

- Case 2142 2152 2162
- NH 84C 83C 86C
- Macdon D50 D60 D65 FD75 D1
- JD 400 series



**30FT RH COARSE SECTION
COMPLETE KNIFE ASSY WITH
HEAD**

151-347B

- Case 2142 2152 2162
- NH 84C 83C 86C
- Macdon D50 D60 D65 FD75 D1
- JD 400 series



**35FT LH COARSE SECTION
COMPLETE KNIFE ASSY WITH
HEAD**

151-357A

- Case 2142 2152 2162
- NH 84C 83C 86C
- Macdon D50 D60 D65 FD75 D1
- JD 400 series



**35FT RH COARSE SECTION
COMPLETE KNIFE ASSY WITH
HEAD**

151-357B

- Case 2142 2152 2162
- NH 84C 83C 86C
- Macdon D50 D60 D65 FD75 D1
- JD 400 series



**40FT LH COARSE SECTION
COMPLETE KNIFE ASSY WITH
HEAD**

151-367A

- Case 2142 2152 2162
- NH 84C 83C 86C
- Macdon D50 D60 D65 FD75 D1
- JD 400 series



**40FT RH COARSE SECTION
COMPLETE KNIFE ASSY WITH
HEAD**

151-367B

- Case 2142 2152 2162
- NH 84C 83C 86C
- Macdon D50 D60 D65 FD75 D1
- JD 400 series



**45FT LH COARSE SECTION
COMPLETE KNIFE ASSY WITH
HEAD**

151-377A

- Case 2142 2152 2162
- NH 84C 83C 86C
- Macdon D50 D60 D65 FD75 D1
- JD 400 series



**45FT RH COARSE SECTION
COMPLETE KNIFE ASSY WITH
HEAD**

151-377B

- Case 2142 2152 2162
- NH 84C 83C 86C
- Macdon D50 D60 D65 FD75 D1
- JD 400 series



**30FT COARSE SINGLE DRIVE
COMPLETE KNIFE ASSY WITH
HEAD**

299-020

- Case 1042 1052 2042 2052
- Macdon 962 970 972 973



**36FT COARSE SINGLE DRIVE
COMPLETE KNIFE ASSY WITH
HEAD**

299-024

- Case 1042 1052 2042 2052
- Macdon 962 970 972 973



**39FT COARSE SINGLE DRIVE
COMPLETE KNIFE ASSY WITH
HEAD**

299-026

- Case 1042 1052 2042 2052
- Macdon 962 970 972 973



**25FT COARSE COMPLETE
KNIFE WITH HEAD**

145-102A

- Case IH 1010, 1020



**30FT COARSE COMPLETE
KNIFE WITH HEAD**

145-122A

- Case IH 1010, 1020



**40FT LH COARSE SECTION
COMPLETE KNIFE ASSY
WITHOUT HEAD**

094-166A

- Case IH 3152 3162



**40FT RH COARSE SECTION
COMPLETE KNIFE ASSY
WITHOUT HEAD**

094-166B

- Case IH 3152 3162



**45FT LH COARSE SECTION
COMPLETE KNIFE ASSY
WITHOUT HEAD**

094-168A

- Case IH 3152 3162



**45FT RH COARSE SECTION
COMPLETE KNIFE ASSY
WITHOUT HEAD**

094-168B

- Case IH 3152 3162



**2-1/8" KNIFEBACK SOLID
HEAD SEGMENT**

451-448

- Case 2142 2152 2162
- NH 84C 83C 86C
- Macdon D50 D60 D65 FD75 D1
- JD 400 series



COURSE SECTION BIG TOOTH KNIFE

217-121

- Case 2142 2152 2162
- NH 84C 83C 86C
- Macdon D50 D60 D65 FD75 D1
- JD 400 series



FINE SECTION KNIFE

205-002

- Case 2142 2152 2162
- NH 84C 83C 86C
- Macdon D50 D60 D65 FD75 D1
- JD 400 series



MD 1/2 END SECTION

207-097

- Case 2142 2152 2162
- NH 84C 83C 86C
- Macdon D50 D60 D65 FD75 D1
- JD 400 series



A-170390 60 DEG TOP CTSK

217-116

- Case 2142 2152 2162
- NH 84C 83C 86C
- Macdon D50 D60 D65 FD75 D1
- JD 400 series



A-118496 60 DEG BTM CTSK

217-119

- Case 2142 2152 2162
- NH 84C 83C 86C
- Macdon D50 D60 D65 FD75 D1
- JD 400 series



1010/1020 3-HOLE COARSE KNIFE

217-113

- Case IH 1010, 1020



KNIFE SECTION - LARGE SERRATION

207-222

- Case IH 3152 3162



CSK BOLT SECTION

458-016WEB



25-PC PKG. 3/4" BOLT & NUT MACDON

458-032

- Case 2142 2152 2162
- NH 84C 83C 86C
- Macdon D50 D60 D65 FD75 D1
- JD 400 series



25-PC PKG. 5/8" BOLT & NUT MACDON

458-035

- Case 2142 2152 2162
- NH 84C 83C 86C
- Macdon D50 D60 D65 FD75 D1
- JD 400 series



25-PC PKG. 1" BOLT & NUT MACDON

458-036

- Case 2142 2152 2162
- NH 84C 83C 86C
- Macdon D50 D60 D65 FD75 D1
- JD 400 series



25-PC PKG. 1 1/4" BOLT & NUT MACDON

458-037

- Case 2142 2152 2162
- NH 84C 83C 86C
- Macdon D50 D60 D65 FD75 D1
- JD 400 series



.5 CTSK BOLT/NUT PKG 82 DEG

458-041

- Case 2142 2152 2162
- NH 84C 83C 86C
- Macdon D50 D60 D65 FD75 D1
- JD 400 series



.5 CTSK BOLT/NUT PKG 60 DEG

458-042

- Case 2142 2152 2162
- NH 84C 83C 86C
- Macdon D50 D60 D65 FD75 D1
- JD 400 series



25-PC PKG. 60 DEG. X 9/16 (.590)-INCH BOLT & NUT

458-043

- Case 2142 2152 2162
- NH 84C 83C 86C
- Macdon D50 D60 D65 FD75 D1
- JD 400 series



50-PC PKG. 60 DEG. X 5/8 (.625)-INCH BOLT & NUT

458-044

- Case 2142 2152 2162
- NH 84C 83C 86C
- Macdon D50 D60 D65 FD75 D1
- JD 400 series



M6 X 18MM 25 PIECE NUT & BOLT KIT

458-061

- Case IH 3152 3162



LOCK NUTS

458-007WEB



M6 X 22MM 25 PIECE NUT & BOLT KIT

458-062

- Case IH 3152 3162



M6 X 28MM 25 PIECE NUT & BOLT KIT

458-063

- Case IH 3152 3162



OVER LAP KIT FINE SECTION - SECTIONS & HARDWARE ONLY

207-441

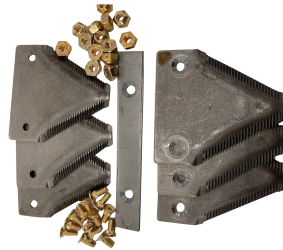
- Case 2142 2152 2162
- NH 84C 83C 86C
- Macdon D50 D60 D65 FD75 D1
- JD 400 series



OVER LAP KIT COARSE SECTION - SECTIONS & HARDWARE ONLY

207-443

- Case 2142 2152 2162
- NH 84C 83C 86C
- Macdon D50 D60 D65 FD75 D1
- JD 400 series



OVER LAP KIT FINE SECTION COME WITH BACKING PLATE

207-444

- Case 2142 2152 2162
- NH 84C 83C 86C
- Macdon D50 D60 D65 FD75 D1
- JD 400 series



OVER LAP KIT COARSE SECTION COME WITH BACKING PLATE

207-446

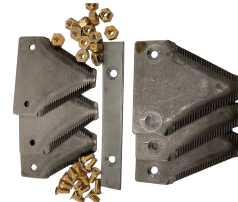
- Case 2142 2152 2162
- NH 84C 83C 86C
- Macdon D50 D60 D65 FD75 D1
- JD 400 series



COARSE DOUBLE DRIVE OVERLAP KIT

207-464

- Case IH 3152 3162



FINE DOUBLE DRIVE OVERLAP KIT

207-465

- Case IH 3152 3162

RRP \$90



MACDON SPLICE KIT WITH HARDWARE 2.125 UNIV

490-114

- Case 2142 2152 2162
- NH 84C 83C 86C
- Macdon D50 D60 D65 FD75 D1
- JD 400 series



SPLICE KIT

490-107

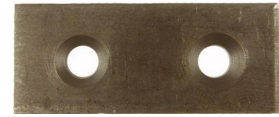
- Case IH 3152 3162



2-1/16" SPLICE KIT WITH HARDWARE 2.063 UNIV

490-110

- Case IH 1010, 1020



CIH BAR BRACE

199-612

- Case 2142 2152 2162
- NH 84C 83C 86C
- Macdon D50 D60 D65 FD75 D1
- JD 400 series



MACDON CENTRE OVERLAP BAR

451-052

- Case 2142 2152 2162
- NH 84C 83C 86C
- Macdon D50 D60 D65 FD75 D1
- JD 400 series



WOBBLE BOX

A-WB100

- Case 2142 2152 2162
- NH 84C 83C 86C
- Macdon D50 D60 D65 FD75 D1
- JD 400 series



CASE 2152,2162 MACDON D60,D65,FD70,FD140

3280SLV8-30

- Case / Macdon Double knife drive belt



GRAIN HEAD KNIFE DRIVE

A-87502685

- International/CaselH®
- 1010, 1020
- 138775A1, 126314A2, 133157A3,
398290A1, 398290A2, 133157A2



UNTIMED KNIFE DRIVE BELT

AG12130W

- 2142 2152 2162 D50 D60 D65 FD70
FD75 FD130 FD140 FD145 82C 83C
86C



KNIFE DRIVE BELT

AG19910WTIM

- 1010 815 915



KNIFE HEAD

450-162

- Case IH 1010, 1020



MACDON 5 DEGREE KNIFEHEAD LH

450-186

- Case 2142 2152 2162
- NH 84C 83C 86C
- Macdon D50 D60 D65 FD75 D1
- JD 400 series



MACDON 5 DEGREE KNIFEHEAD RH

450-187

- Case 2142 2152 2162
- NH 84C 83C 86C
- Macdon D50 D60 D65 FD75 D1
- JD 400 series



KNIFEHEAD BEARING

B2020KOY

- Case 2142 2152 2162
- NH 84C 83C 86C
- Macdon D50 D60 D65 FD75 D1
- JD 400 series

**KNIFEHEAD SEAL***RS12517525LNC*

- Case 2142 2152 2162
- NH 84C 83C 86C
- Macdon D50 D60 D65 FD75 D1
- JD 400 series

**KNIFEHEAD PLUG, MACDON***455-031*

- Case 2142 2152 2162
- NH 84C 83C 86C
- Macdon D50 D60 D65 FD75 D1
- JD 400 series

**MD KNIFEHEAD LATE PIN***455-032*

- Case 2142 2152 2162
- NH 84C 83C 86C
- Macdon D50 D60 D65 FD75 D1
- JD 400 series



**MACDON REEL TINE FINGER
 42MM [COMES WITH SCREW]**

A-87561020

- Case 2142 2152 2162 Macdon D50 D60 D65 FD70 FD75 D130 D135 D140 D145 FD130 FD135 FD140 FD145 New Holland 82C 83C 86C



REEL BEARING BUSH REPAIR

A-220939

- Case 2142 2152 2162 D50 D60 D65 FD70 FD75 D130 D135 D140 D145 FD130 FD135 FD140 FD145 New Holland 82C 83C 86C



FINGER HOLDER

A-1308425C1

- Case 2142 2152 2162
- NH 84C 83C 86C
- Macdon D50 D60 D65 FD75 D1
- JD 400 series



RETRACTABLE FINGER GUIDE

A-87620690

- Case 1010 1015 1020 1042 1052 2010 2020 2042 2052 2062 2142 2152 2162 3016 3020 3052 3152 3162 Macdon 962 963 970 972 974 D50 D60 D65 FD70 FD75 D130 D135 D140 FD130 FD135 FD140 FD145 New Holland 760CG 790CP 840CD 880CF



REEL BUSH CLIP

A-220941

- Case 2142 2152 2162 D50 D60 D65 FD70 FD75 D130 D135 D140 D145 FD130 FD135 FD140 FD145 New Holland 82C 83C 86C



REEL ARM BEARING HALF

A-344802A1

- Case 1040 1042 Macdon 960 962



**MACDON REEL TINE FINGER
 42MM [NO SCREW]**

A-137987

- Case 2142 2152 2162 Macdon D50 D60 D65 FD70 FD75 D130 D135 D140 D145 FD130 FD135 FD140 FD145 New Holland 82C 83C 86C



HEADER REEL CAM FOLLOWER

A-AH169497

- Case 1010 Honeybee with HCC reel John Deere 615 616 618 620 622 625 630 635 640 645 725 730 735 740 913 915 918 920 922 924 925 930 936 HD series 35-50F Midwest Duras



**RETRACTABLE FINGER
 .625" X 8.94"**

A-434295A2

- Case 1010 1015 1020



UPPER CROSS AUGER BEARING OUTER

UEL206-103NSK

- Case 2142 2152 2162
- NH 84C 83C 86C
- Macdon D50 D60 D65 FD75 D1
- JD 400 series

RRP \$45



UPPER CROSS AUGER FLANGE

PF206ECO

- Case 2142 2152 2162
- NH 84C 83C 86C
- Macdon D50 D60 D65 FD75 D1
- JD 400 series



CROSS AUGER CENTRE BEARING HEX

206KRR6TIM

- Case 2142 2152 2162
- NH 84C 83C 86C
- Macdon D50 D60 D65 FD75 D1
- JD 400 series



CROSS AUGER REPLACEMENT BUSH

BSCAG-294682RB

- Case 2142 2152 2162 Macdon D50 D60 D65 FD70 FD75 D130 D135 D140 D145 FD130 FD135 FD140 FD145



MACDON CROSS AUGER TUBE REPAIR

BSCAG-294682

- Case 2142 2152 2162 Macdon D50 D60 D65 FD70 FD75 D130 D135 D140 D145 FD130 FD135 FD140 FD145



MACDON CROSS AUGER INT HUB {KEYED HUB WITH GREASE NIPPLE

BSCAG-294682HUB

- Case 2142 2152 2162 Macdon D50 D60 D65 FD70 FD75 D130 D135 D140 D145 FD130 FD135 FD140 FD145



MACDON CROSS AUGER CENTRE [CONNECTION REPAIR KIT]

BSCAG-165064K

- Case 2142 2152 2162 Macdon D50 D60 D65 FD70 FD75 D130 D135 D140 D145 FD130 FD135 FD140 FD145



MACDON / CASE CROSS AUGER ISOLATION KIT

CMCAIK

- Macdon D50 D60 D65 FD70 FD75



DRIVE SPROCKET MACDON CASE FEED DRUM 37T

151793

- Macdon D50 D60 D65 FD70 FD75 Case 2142 2152 2162 New Holland 82C 83C 86C



**DRIVE SPROCKET MACDON
CASE FEED DRUM 16T 1-1/4 X
14SPL**

87566797

- Macdon D50 D60 D65 FD70 FD75
Case 2142 2152 2162 New Holland 82C
83C 86C



**REEL TINE FINGER DOUBLE
WING 6" SPACED 35MM
TUBES**

A-783597

- Various Case New Holland John Deere
AGCO Honeybee



MACDON WEARPLATE

BSCAG-129297

- Case 2142 2152 2162
- NH 84C 83C 86C
- Macdon D50 D60 D65 FD75 D1
- JD 400 series



BSCAG 3MM STAINLESS PLATE

A-MACSTAIND60C

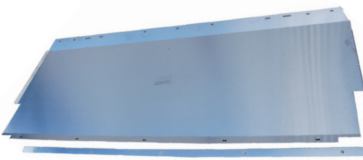
- Case 2142 2152 2162
- NH 84C 83C 86C
- Macdon D50 D60 D65 FD75 D1
- JD 400 series



BSCAG 3MM STAINLESS PLATE

A-MACSTAINLE

- Case 2142 2152 2162
- NH 84C 83C 86C
- Macdon D50 D60 D65 FD75 D1
- JD 400 series



CENTRE FEED FLOOR PLATE [LOWER DECK PAN] 3MM STAINLESS

BSCAG-220446SS

- Case 2142 2152 2162 Macdon D50 D60 FD70 D65 FD75 New Holland 82C 83C 86C



BSCAG 3MM STAINLESS PLATE

A-MACSTAINRE

- Case 2142 2152 2162
- NH 84C 83C 86C
- Macdon D50 D60 D65 FD75 D1
- JD 400 series



CA25 ADAPTOR SKID

A-MACSTAIN75CUT

- Case 2142 2152 2162
- NH 84C 83C 86C
- Macdon D50 D60 D65 FD75 D1
- JD 400 series



COMPLETE 5MM SHOE ASSY

A-MACSTAINREHD

- Case 2142 2152 2162
- NH 84C 83C 86C
- Macdon D50 D60 D65 FD75 D1
- JD 400 series



COMPLETE 5MM SHOE ASSY

A-MACSTAINLEHD

- Case 2142 2152 2162
- NH 84C 83C 86C
- Macdon D50 D60 D65 FD75 D1
- JD 400 series



COMPLETE CENTRE 5MM SHOE ASSY C/W FEET

A-MACSTAIN65C

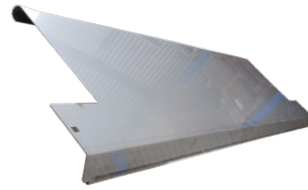
- Case 2142 2152 2162
- NH 84C 83C 86C
- Macdon D50 D60 D65 FD75 D1
- JD 400 series



**CENTRE FEED UPPER DECK
PAN [3MM STAINLESS] 187945**

BSCAG-MDFEEDPL

- Case 2142 2152 2162 Macdon D50 D60 FD70 D65 FD75 New Holland 82C 83C 86C



**MACDON CENTRE FEED DECK
PAN TOP SUIT FM100 FM200**

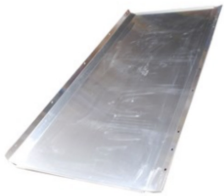
240264

- D130 D135 D140 D145 FD130 FD135 FD140 FD145 D215 D220 D225 D230 D235 D241 D245 FD225 FD230 FD235 FD240 FD241 FD245 FD250



**MACDON SKID PLATE
ENGAGING ROD**

165722CM



**MACDON CENTRE FEED SKID
PAD BOTTOM D1 FM100 S/S**

BSCAG-287768



**MACDON FD2 SKID PLATE SS
COMPLETE WITH FEET**

CM313374



**MACDON FD2 SKID PLATE SS
SKIN ONLY**

CM289759SS



**MACDON ENGAGING ROD
LEFT HAND D2 FD2 SKID PLATE
165168**

CM165168



**MACDON ENGAGING ROD
RIGHT HAND D2 FD2 SKID
PLATE 165588**

CM165588



**MACDON FRONT BAR OUTER
PLATE FM100 FM200 FLOAT
MODULE**

CM295211



**MACDON ENGAGING ROD
OUTER D2 FD2 OUTER SKID
PLATE 312675**

CM312675



DRAPER BELT REPAIR KIT

A-1001970



36" DRAPER BELT

BSCAG-JD36

- JD 900 series



39.54" DRAPER BELT

BSCAG-JD39.54

- JD 600 series
- JD 700 series



**CNTR DRAPER BELT
60X63.56IN**

A-1003426

- JD 900 series



**55.3" X 58.01" CENTRE FEED
BELT WITH JOINER**

A-AXE12533

- JD 600 series
- JD 700 series



**CENTRE BELT 58.1 X 61.85IN
JOHN DEERE**

B1011087WCC



JOINER & HARDWARE KIT

A-1003863

- JD 900 series



38.7" BELT JOINER

A-1008230

- JD 600 series
- JD 700 series



JOHN DEERE DRAPER BELT DRIVE ROLLER 900 SERIES FITTED WITH BEARING

BSCAG-AH212964

- John Deere - 925D, 930D, 936D



JOHN DEERE DRAPER BELT IDLER ROLLER 900SERIES FITTED WITH BEARINGS

BSCAG-H213230

- John Deere 925D,930D,936D



JOHN DEERE CENTRE FEED DRIVE ROLLER 900 SERIES FITTED WITH BEARING

BSCAG-AH212965

- John Deere - 925D, 930D, 936D



JOHN DEERE CENTRE FEED IDLER ROLLER 900 SERIES FITTED WITH BEARINGS

BSCAG-H213228

- John Deere - 925D, 930D, 936D



DRIVE ROLLER BEARINGS

206KRR6

- JD 600 900 series



IDLER ROLLER BEARINGS

204KRR2

- JD 900 series 600D



AIR SPRING

AXE39011

- JD 900 series



JOHN DEERE DRAPER BELT DRIVE ROLLER 600 & 700 SERIES FITTED WITH BEARING

BSCAG-AXE16282

- John Deere - 625D, 630D, 635D, 640D, 725D, 730D, 735D, 740D



JOHN DEERE DRAPER BELT IDLER ROLLER 600 & 700 SERIES FITTED WITH BEARINGS

BSCAG-H216011

- John Deere - 625D, 630D, 635D, 640D, 725D, 730D, 735D, 740D



CENTRE FEED SPLINE SHAFT

BSCAG-H233910

- JD600 series



1350MM CENTRE FEED IDLER ROLLER LENGTH

BSCAG-AXE11398

- JD 600/700 series



1420MM CENTRE FEED DRIVE ROLLER LENGTH

BSCAG-AXE11186

- JD 600/700 series



CENTRE FEED ADAPTOR FLOOR SUIT JOHN DEERE 600 700 SERIES STAINLESS STEEL

H228454

- John Deere 625D 630D 635D 640D 725D 730D 735D 740D



JOHN DEERE DRAPER BELT DRIVE ROLLER LAGGED

CMAXE16282L



JOHN DEERE CENTRE FEED DRIVE ROLLER LAGGED

CMAXE11186L



JOHN DEERE DRIVE CENTRE FEED ROLLER HUB

CMAXE11186HUB



DRAPER SHOE 12IN POLY SKID JD 600/700 SERIES

A-H231521



PLATE SKID CENTER POLY 9-1/2X5-3/8IN JD 600 SERIES

A-H205344



**DRAPER SHOE 18IN POLY SKID
JD 600/700 SERIES**

A-H231522



**DRAPER SHOE POLY SKID JD
600/700 SERIES**

A-H231523



**BRACKET SKID SHOE FRONT
CLTP JOHN DEERE 625D 630D
635D**

A-H241108



JOHN DEERE COUPLER

A-AH225669

- Hydraulic quick coupler socket, 1/2"



3PLK-O-2AMC 3PLK JOHN DEERE

3PLK-O-2AMC



1/2" COUPLER O-RING SEAL REPAIR KIT

LAN166987



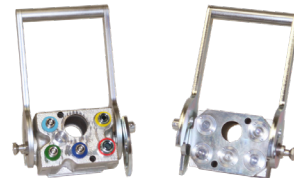
3/8" COUPLER O-RING SEAL REPAIR KIT

LAN166988



COMPLETE SINGLE POINT BLOCK (ALL FUNCTIONS)

LAN166991



MULTI COUPLER - HEADER SIDE

LAN3PLK-O-5AFC



HYDRAULIC REPLACEMENT VALVE 1/2IN FASTER QUICK COUPLER SUITS LAN3PLK-O-5AFC

LANAH225671



HYDRAULIC REPLACEMENT VALVE 3/8IN FASTER QUICK COUPLER SUITS LAN3PLK-O-5AFC

LANAXE21789



YELLOW 1/2" COUPLER FOR REEL RETURN FUNCTION

KIT3FFP0911/38S

- JD 600 700 900 series



**RED 1/2" COUPLER FOR REEL
DRIVE FUNCTION**

KIT3FFP0911/58S

- JD 600 700 900 series



**GREEN 1/2" COUPLER FOR REEL
LIFT FUNCTION**

KIT3FFP0911/12S

- JD 600 700 900 series



**BLUE/LIGHT BLUE 3/8"
COUPLER REEL FORE AND AFT**

KIT3FFP0611/38S

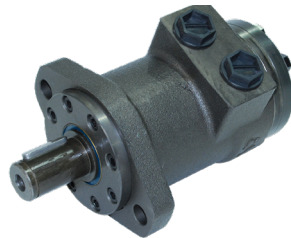
- JD 600 700 900 series



LH RH DRAPER MOTORS

A-AH159155

- JD 900 series



CENTRE FEED DRIVE MOTOR

A-AH159156

- John Deere 925D 930D 936D



L/S/L DOUBLE HEAT TREATED GAURDS H229539

G-630DH

- JD 600 900 series



S/L/S DOUBLE HEAT TREATED GAURDS H229540

G-635DH

- JD 600 700 900 series



STUB GUARDS S/L/S DOUBLE HEAT TREATED GAURDS H229538

G-610DH

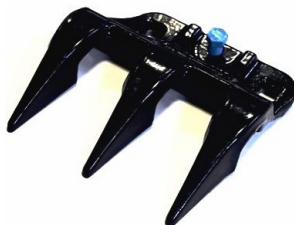
- JD 600 700 900 series
- Fits flex front also



STUB GUARDS L/S/L DOUBLE HEAT TREATED GAURDS H229537

G-615DH

- JD 600 700 900 series
- Fits flex front also



CENTRE TOP GUARDS

G-4928

- JD 600 700 series



HIGH ADJUSTABLE HOLD DOWN AH218548

G-625

- JD 600 700 900 series



LOW ADJUSTABLE HOLD DOWN AH218547

G-627

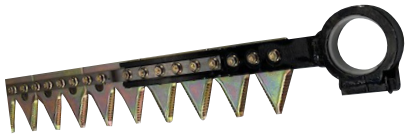
- JD 600 700 900 series



03M7194HOB HOBSON HOB JD GUARD

03M7194HOB

- JD 600 700 900 series



**25FT COMPLETE FINE
SECTION KNIFE ASSY
HEADLESS**

136-303A

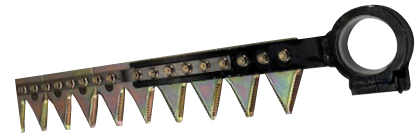
- JD 925D



**30FT COMPLETE FINE
SECTION KNIFE ASSY
HEADLESS**

136-307A

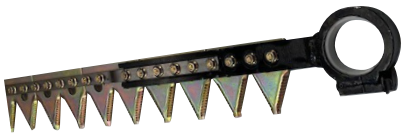
- JD 930D



**36FT COMPLETE FINE
SECTION KNIFE ASSY
HEADLESS**

136-311A

- JD 936D



**35FT LH COMPLETE KNIFE
ASSY HEADLESS**

097-309A

- JD 635D 735D



**35FT RH COMPLETE KNIFE
ASSY HEADLESS**

097-309B

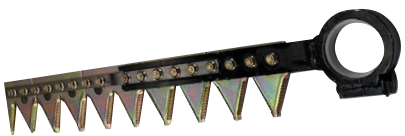
- JD 635D 735D



**40FT LH COMPLETE KNIFE
ASSY HEADLESS**

097-313A

- JD 640D 740D



**40FT RH COMPLETE KNIFE
ASSY HEADLESS**

097-313B

- JD 640D 740D



**40FT LH COMPLETE KNIFE
ASSY WITH HEAD**

097-430A

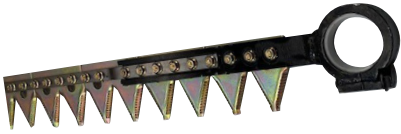
- JD 640FD 740FD



**40FT RH COMPLETE KNIFE
ASSY WITH HEAD**

097-430B

- JD 640FD 740FD



**45FT LH COMPLETE KNIFE
ASSY WITH HEAD**

097-434A

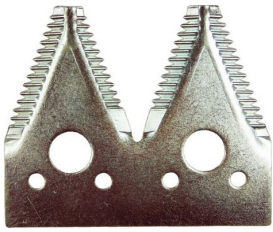
- JD 645FD 745FD



**45FT RH COMPLETE KNIFE
ASSY WITH HEAD**

097-434B

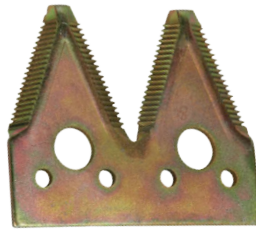
- JD 645FD 745FD



COARSE TWIN CUT KNIFE SECTION H163131

207-010

- JD 600 700 900 series



FINE TWIN CUT KNIFE SECTION H153329

207-010.4

- JD 600 700 900 series



1/2 END SECTION FINE

207-010.6

- JD 600 700 series



1/2 END SECTION FINE

207-023

- JD 900 series



CENTRE CTSK COARSE SECTION

207-582

- JD 600 700 900 series



CENTRE CTSK FINE SECTION

207-583

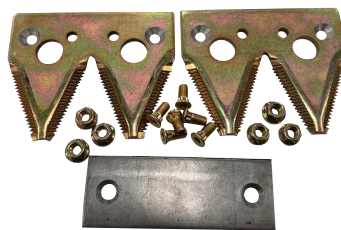
- JD 600 700 900 series



1/2 END SECTION COARSE KNIFE SECTIONS

207-010.1

- JD 200 900 Rigid, JD600, 700 series



DRIVE OL KIT FINE

207-436

- JD 600 700 900 series



M6X16MM NUT & BOLTS 50PACK

458-077

- JD 600 700 900 series



**M6X20MM NUT
& BOLTS 25PACK**

458-078

- JD 600 700 900 series



**M6X25MM NUT
& BOLTS 25PACK**

458-079

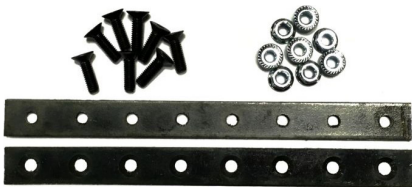
- JD 600 700 900 series



KNIFE SECTION

207-001.1

- JD 200, 215, 218, 220, 222, 224, 230, 900, 915, 918, 920, 922, 925, 930
- 7 TPI, C/Sunk holes & cutouts, plated



SPLICE KIT

490-105

- JD 600 700 900 series



SPLICE REPAIR KIT AH202628

490-111

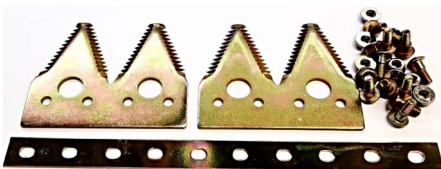
- JD 600 700 900 series



SPLICE KIT 600D LAP JOIN

490-112

- JD 600 700 series



**SPLICE KIT 600D LAP JOIN
COARSE WITH SECTIONS**

490-116



JOHN DEERE KNIFE DRIVE BELT

AG17840WTIM [HC117]



JOHN DEERE KNIFE DRIVE BELT

AG18430WTIM [HC128]



CUTTER BAR, KNIFE DRIVE

A-DE21086

- John Deere 625D, 630D, 635D, 640D, 645D, 630FD, 635FD, 640FD, 645FD, 725D, 730D, 735D, 740D, 745D, 730FD, 735FD, 740FD, 745FD



GRAIN HEAD, KNIFE DRIVE

A-DE19786

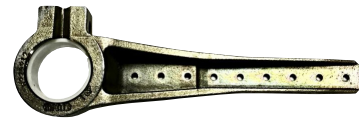
- John Deere® 925D, 930D, 936D
- Pro Drive To Fit JD 900 Series, W/Out Pulley,K/HeadBrg Block
- 14697, DE19786, DE19372, AH172026



KNIFEHEAD

450-121

- JD 900 series



KNIFEHEAD

450-119

- JD 600 700 series



NYLON RING - KNIFEHEAD

455-095

- JD 600 700 900 series



KNIFE DRIVE BEARING

FC12025S09SNR

- JD 600 700 900 series



REEL BAT TUBE HOLDER

A-H175727

- 625D 630D 635D 640D 630FD 635FD 640FD 614R 615F 616R 618R 620R 622R 630R 635R 925D 930D 936D 900F Series 900R Series



HOUSING HALF, REEL ARM BEARING

A-H175603

- John Deere®: 600, 615, 618, 620, 622, 625, 630, 900, 913, 915, 918, 920, 922, 924, 925, 930, 925D, 930D, 936D
- H175603, H136956
- 600 R & F Series, 900 SERIES



REEL ARM ECCENTRIC BEARINGS

A-AH169497

- JD 600 900 series



JOHN DEERE REEL BUSH [1 PIECE UNIT WITH PINNED HINGE]

A-AXE28803

- JD 600R 600F 600D 600FD 700D 700FD 900D HDR HDF RDF Series



CAP, CROSS AUGER FINGER

A-H87192

- John Deere® 215, 218, 220, 222, 224, 230, 914P, 915, 918, 920R, 925R, 930R, 920F, 925F, 930F, 925D, 930D, 936D
- H87192, O1152.01, O115201, O1154, FH12D, 72003, 86900499, 86578659, 86578658, 86578657



GUIDE, AUGER FINGER

A-H87044

- John Deere® 215, 218, 220, 222, 224, 230, 914P, 915, 918, 920R, 925R, 930R, 920F, 925F, 930F, 925D, 930D, 936D
- Plastic
- FH12D, H87044, H87192, H86918, HPJD-1716, HPJD1716, O1154, 71993, 86900499, 86578659, 86578658, 86578657



JOHN DEERE RETRACTABLE FINGER 600, 700 SERIES 280MM X 16MM

A-AH214868

- 615F 618F 620F 625F 635F 614R 615R 616R 618R 620R 622R 625R 630R 635R 625D 630D 635D 640D 630FD 635FD 640FD 645FD 722 725 730 735 740 725D 730D 735D 740D 730FD 735FD 740FD 745FD



RETRACTABLE FINGER, STEEL, 265MM, SUITS JOHN DEERE, HONEY BEE AND NEW HOLLAND

A-H162662

- John Deere® 215, 218, 220, 222, 224, 230, 914P, 915, 918, 920R, 925R, 930R, 920F, 925F, 930F
- Steel
- H150050, H102724, AMW80650, 0911, H162662-M, 4C4084



RETAINER; FINGER GUIDE, TOP

A-H217264

- John Deere® 625D, 630D, 630FD, 635D, 635FD, 640D, 640FD, 645FD, 725D, 730D, 730FD, 735D, 735FD, 740D, 745FD



**RETAINER; FINGER GUIDE,
BOTTOM**

A-H217265

- John Deere® 625D, 630D, 630FD, 635D, 635FD, 640D, 640FD, 645FD, 725D, 730D, 730FD, 735D, 735FD, 740D, 745FD



BALL; FINGER GUIDE

A-H217266

- John Deere® 625D, 630D, 630FD, 635D, 635FD, 640D, 640FD, 645FD, 725D, 730D, 730FD, 735D, 735FD, 740D, 740FD, 745FD
- H217266



**PLATFORM FLIP REEL FINGER
FITS JOHN DEERE**

A-KXE10423

- John Deere® 622X, 625D, 625X, 630D, 630FD, 630X, 635D, 635FD, 635X, 640D, 640FD, 640X, 645FD, 725D, 730D, 730FD, 735D, 735FD, 740D, 740FD, 745FD
- HXE81790, KXE10315, KXE10316, KXE10423, RT423, 10424, HXE81790-10



JOHN DEERE FINGER HOLDER

A-AH171602

- 614R 615R 616R 618R 620R 622R 625R 630R 635R 615F 616F 618F 620F 622F 625F 630F 625D 630D 635D 640D 630FD 635FD 640FD 645FD 615P 725D 730D 735D 740D 730FD 735FD 740FD 913 915 918 920 922 925 914P HDR HDF RDF series



**REEL TINE FINGER DOUBLE
WING 6" SPACED 35MM
TUBES**

A-783597

- Various Case New Holland John Deere AGCO Honeybee



2MM HD TABLE AUGER PLATE

XTD-HXE157951

- John Deere HD



3MM FOR WINGS

XTD-HXE171949

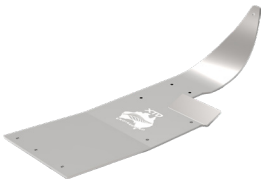
- John Deere HD40-50 R-X-F



3MM FOR CENTER

XTD-HXE171950

- John Deere HD40-50 R-X-F



5MM LEFT HAND

XTD-HXE87669

- John Deere Flex Front



5MM RIGHT HAND

XTD-HXE87670

- John Deere Flex Front



CUTTER BAR SKID

XTD-H205344

- John Deere 600F 600R 600FD



3MM CUTTER BAR SKID

XTD-HXE87738

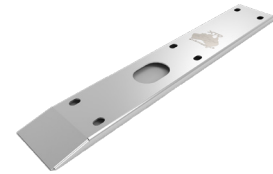
- John Deere Flex Front



UNDER BOTTOM FRONT PAN

XTD001

- John Deere 936



UNDER BELT CHANNEL

XTD002

- John Deere 936

Turbodrum parts.
Call local Motion Australia store.

Introducing the Retrodrum earlier known as Turbodrum

This is what real farmers are telling us about our very first, 2016 Retrodrums!

- “Shes loving the big canola. Not even a stutter at the feeder”
- “Pretty exciting how much it is pumping through. Like it should be from the start. Massive stuff”
- “Actually driving machine to engine capacity now for first time in canola”
- “In heavy barley it just loads the header up good, no fluffing and no noise”
- “All good, works like a dream, cheers!”
- “Before we were driving on the edge of the seat with the feeder slip clutch constantly going off in big lupins. We’re actually loading the engine up now, and the slip clutch hasn’t gone off once!”
- “Our retrodrum was matching our Vario tin front in canola at 11 clicks on wheeltracks. With the retrodrum fitted, I honestly think our drapers are just a better all round front”
- “In she went and away it went. Awesome so far. In some 7 ft canola, smashing it in!”

Retrodrum is a complete plugout-plugin replacement feed spiral to suit Macdon D60 and D65 header fronts. If you are reading this then you already know the frustration of slow harvest speeds in bulky crops like canola, and even worse, the blockages and breakdowns caused by the standard feed drum in these fronts.

Retrodrum is an instant fix to these problems, allowing you to go faster and get the crop off quicker.

Retrodrum is a heavy duty feed drum, and comes complete with all internal components fully welded and assembled. Fitting the Retrodrum is quicker than fixing your original one, and comes at a fraction of the price. Don’t wait until yours is broken to fix the problem once and for all.

Why do I need a Retrodrum?

Every day lost at harvest is up to 1% loss in value. (SEPWA, 2007). Even one day lost with breakdowns or bad feeding in a 5000t program equals 25t of lost yield. That’s more than the cost of a Retrodrum.

Like so many farmers, we love a lot of things about Macdon fronts, but there is a lot “not to love” about this particular component. So much so that a lot of people are trading out of what is otherwise a pretty good front. Common issues caused by the original feed drum include:

- Blocking and jamming in canola, pulse and heavy cereal crops.
- Restricting harvest speeds to less than half header capacity in canola.
- Crank shaft bending, resulting in fingers going inside the drum then pounding it from the inside.
- Having to remove the whole drum and crankshaft just to replace retractable finger supports.
- Internal reverse clutch: where do we start? Jamming in reverse position, falling apart, very expensive and time consuming to repair, causing fires if not installed correctly.



- Cracking end plates and bending stub shafts from lump feeding and regular reversing.
- Wearing out the adaptor slip clutch from constant blockages.
- Incredibly expensive to repair or replace, not to mention lost valuable harvest time.

How does the Retrodrum work?

There is no one feature of Retrodrum that makes it work so well. The huge capacity and reliability farmers are getting out of the Retrodrum is a combination of a lot of hard learned farmer experiences!

A much more aggressive pattern. It literally grabs crop and pulls it through in a constant and steady flow. A smaller barrell with taller flighting creates a huge gap for pulling through bulky crops.

Less flighting and more fingers, so now you can use the full width of your machine.

Retrodrum’s unique paddle flights prevent repeating issues by eliminating the usual “dead zone” under the drum.

Large diameter, fully welded crankshaft.

Infinitely adjustable finger timing, to suit any conditions.

Eliminates the problematic and unnecessary reverse clutch.

Field-fit clamp-on retractable finger holders

Easy installation with clear instructions provided

Extends the life of the rest of your expensive machine by reducing shock loading and plugging.

We can supply Retrodrums to suit various makes & models

- Macdon CA20 1052, CA25 1040, FD1 1042
- Honey Bee 94C, SP36
- John Deere 640D, 936D
- MidWest
- Crophawk
- Durus

**CALL YOUR LOCAL MOTION
AUSTALIA TEAM FOR A QUOTE**



CRANKSHAFT BEARING

AEL207-106NTN

- Various



CA25 SPROCKET BEARING

6305LLUNTN

- CA25



FINGER CLAMP

4000-0120

- Various



FLANGE

PF207ECO

- Various



FINGER GUIDE

4000-0333

- Various



150MM RETRACTABLE FINGER

4000-0119-150

- Various



195MM RETRACTABLE FINGER

4000-0119-195

- Various



225MM RETRACTABLE FINGER

4000-0119-225

- Various



240MM RETRACTABLE FINGER

4000-0119-240

- Various



285MM RETRACTABLE FINGER

4000-0119-285

- Various



RETRODRUM

McD300x1675PHIL

- CA20 CA25 FD1



CA20 ADAPTOR KIT

CA20KIT

- CA20



CA25 ADAPTOR KIT

CA25KIT

- CA25



FD1 ADAPTOR KIT

FD1KIT

- FD1



RETRODRUM ASSEMBLY

RETRODRUM640D

- 600 series



**RETRODRUM
RETRODRUM1052**

RETRODRUM1052



**RETRODRUM
RETRODRUMCRPHAWK**

RETRODRUMCRPHAWK



**RETRODRUM
RETRODRUM3152**

RETRODRUM3152



**RETRODRUM
740RETRODRUM**

740RETRODRUM



**RETRODRUM
RETRODRUMAGCO**

RETRODRUMAGCO

Make windrowing canola easy with our versatile and reliable vertical knives. Jadan Enterprises in Cowra, NSW have been helping farmers throughout Australia for well over two decades with their cropping requirements.

Designed and built to suit Australian conditions, our vertical knives can work day and night. If you want to increase your windrowing productivity and clean cut crops, choose Vertical Knives by Jadan Enterprises in Cowra.

“We’ve used them for over 10 years... we wouldn’t go without them”

Farmer—Cowra, NSW

Key Features of Vertical Knives

- Minimal maintenance - only one moving part
- Rotary action - minimal vibration
- Easily retro fitted to any machine
- Easily swapped from left to right side
- Clean cut - gentle on the crops
- Rotary action - centrifugal force self-cleans - knives don't choke
- Increases Productivity of windrowing - less downtime due to blockages
- Works fantastic in standing or down crops

P/N JGVK40019



Australian machinery for Australian conditions

Countrywide Engineering provides versatile and reliable harvesting machinery purpose-built for Australian conditions. We understand the local elements, and have enough experience working with farmers to understand the design needs of farm equipment for Aussie farms. Hundreds of farmers Australia wide utilise our agricultural machinery

VERTICAL KNIVES

Reliable

Our vertical knives are reliable. In fact, the same knife bodies have been helping Australian farmers for more than a decade. Since 1989, hundreds of farmers across Australia have used our vertical knives because of the tool's versatility and reliability. Our vertical knives can handle all your cropping requirements and will keep on working all day long.

Versatile

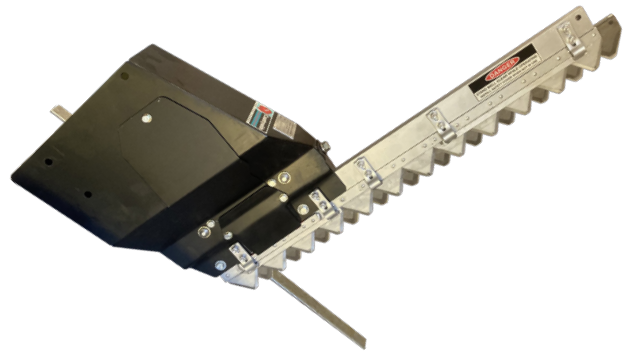
Our vertical knives are designed and engineered in RH and LH configurations. The knives are mounted on the cutting tables using adaptors (RH and LH) that are specifically designed to fit all makes and models of front.

Strong Motor

An 80CC hydraulic motor drives our vertical knife. The hydraulic source is from the hydraulic reel-drive motor by redirecting the hydraulic return hose to the Vertical Knife

circuit, before returning to the oil reservoir.

This hydraulic system maintains a steady 160- to 240-cycle-per-minute to the knife bodies. Our clients access steady cutting action that keeps going for as long as you need it.





REEL TYNE, SINGLE, NYLON

A-86562205

- Ford/New Holland
- 21, 25, 30, 36, 88C, 92C, 94C, 994
- Suits U2 Tyne Reel
- Use WN-80182



KNIFE SECTION, PRO CUT

WN-14529

- HoneyBee
- RH End, 1 1/2 Section
- Various
- 14529, 14529.01, 87037117, KS-14529, KS14529



FINGER HOLDER

A-AH171602

- Various Honeybee



A-H87192

A-H87192

- Various Honeybee



A-H87044

A-H87044

- Various Honeybee



REEL, FINGER HOLDER, BEARING

WN-AH107066

- Miscellaneous
- D, HB, NH
- AH107066, HPJD927, AH164128, AH171884, AH110993, H103046, AH87944, AH143705, 73893, 73324, 86609130, 86564937



GRAIN HEAD, CUTTER BAR, BRIDGE ROLLER, OVERLAP STRAP

WN-SC1600410

- Honeybee
- Miscellaneous
- Center Roller, For Double Drive Systems
- 27744, SC16004.10, SC1600410, 16004.10, 1600410, Schumacher, Easy-Cut



SIDE HYDRAULIC MOTOR

BSCAG-84136262

- Honeybee SP ST
- New Holland 88C 94C



GRAIN HEAD, KNIFE HEAD, CRARY CUTTERBAR

WN-81364

- HoneyBee
- Various
- Left Hand, complete with Nylon Ring, suits Crary Guards
- 81364, 69263, HB69263, 86564992, KH-81364, KH81364, 87350414, 77606, 69602



CUTTERBAR, KNIFE ASSEMBLY LESS HEAD

WN-80654.01

- HoneyBee
- SP30, 994, 94C
- Knife Assembly, SCH, 15' RH Double Drive w/o KH (30' DD)



CUTTERBAR, KNIFE ASSEMBLY LESS HEAD

WN-80653.01

- HoneyBee
- SP30, 994, 94C
- Knife Assembly, SCH, 15' LH Double Drive w/o KH (30' DD)
- 80653.01



CUTTERBAR, KNIFE ASSEMBLY LESS HEAD

WN-80656.01

- HoneyBee
- SP36, SP39, 994, 94C
- SCH, 18' RH Double Drive w/o KH (36' DD & 39' DD)
- 80656.01



GRAIN HEAD, CUTTER BAR, KNIFE, BOLT

WN-10067

- HoneyBee
- Various
- M6 x 18
- 10067, 61521, 86563535



GRAIN HEAD, CUTTER BAR, KNIFE HEAD, BOLT

WN-10072

- HoneyBee
- Various
- M6 x 28
- 10067, 62758, 86563536, BN-10072, BN10072



CUTTERBAR, KNIFE ASSEMBLY LESS HEAD

WN-80648.01

- HoneyBee
- SP30, 994, 94C
- Knife Assembly, SCH, 30' Single Drive w/o KH
- 80648.01



CUTTERBAR, KNIFE ASSEMBLY LESS HEAD

WN-80655.01

- HoneyBee
- SP36, 994, 94C
- Knife Assembly, SCH, 18' LH Double Drive w/o KH (36' DD)



NYLON RING - KNIFEHEAD

455-095

- Various Models



KNIFE DRIVE BEARING

FC12025S09SNR

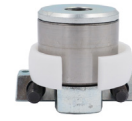
- Various Models



PIPE REEL REPAIR KIT

WN-KITHXH

- 71C, 72C, 73C, 74C, 92C, 94C, 740C, 740CF
- For reel pipes with hex holes and 6in finger spacing



GRAIN HEAD, KNIFE HEAD, BEARING CRANK ASSEMBLY

WN-12766

- Ford/New Holland®
- 18HB, 21HB, 25HB, 30HB, 36HB, 88C30P, 88C36P, 88C42P, 88C45P, 92C, 94C, 994, 994D
- Includes Nylon Ring and Capscrews



GRAIN HEAD, REEL TYNE

WN-410856A1

- Ford/New Holland®
- 71C, 72C, 73C, 74C, 92C, 94C, 740C, 740CF
- Centre , Long Double Wing, 6"Spacing, Priced Each



GRAIN HEAD, CUTTER BAR, KNIFE SECTION, HARDWARE KIT

WN-SC80503



GRAIN HEAD, CUTTER BAR, KNIFE SECTION

WN-10961

- HoneyBee®
- Pro Cut, 11 Teeth Per Inch
- 10961, 10961.07, KS-240-F, 26208, 86561692, KS-1091, KS10961, KS240F, KS003F



GRAIN HEAD, CUTTER BAR, KNIFE SECTION

WN-10978

- HoneyBee®
- Coarse, Pro Cut, 7 Teeth Per Inch
- 10978, 10978.04, KS-240, KS-10978, KS10978, KS240, KS003



GRAIN HEAD, CUTTER BAR, HOLD DOWN, CLIP

WN-KC-LHAHDCS1

- HoneyBee®
- SP21, SP25, SP30, SP36, SP39, SP42, 94C
- Spring Loaded, 3/8" Bolts
- KC-LHAHDCS1, KCLHAHDCS1, 86561626, 26605, 24082, 25724



CUTTERBAR, KNIFE ASSEMBLY LESS HEAD

WN-80649.01

- HoneyBee®
- SP36, 994, 94C
- Knife Assembly, SCH, 36' Single Drive w/o KH



GRAIN HEAD, CUTTER BAR, KNIFE HEAD

WN-14226

- HoneyBee®
- SP30, SP36, 994, 94C
- Left Hand, Includes Nylon Ring, Schumacher



GRAIN HEAD, CUTTER BAR, KNIFE HEAD

WN-14227

- HoneyBee®
- SP30, SP36, 994, 94C
- Right Hand, Includes Nylon Ring, Schumacher



42" SMOOTH MAC 3000

A-1008787

- 994, 996, SP25, SP30, SP36, SP39



HB 41.75 SMOOTH BACK

BSCAG-B1008791

- 994, 94C, 92C



LH RH CENTRE DARPER MOTOR

BSCAG-28732

- Honeybee 994 94C 92C various



COMBINE ADAPTOR CENTRE FEED DRIVE ROLLER 68.75" BELT, 76MM X 1765MM

HBCDR1765

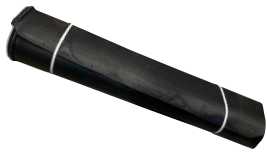
- Honeybee Grain Belt Header 2007 onwards



CENTRE FEED IDLER ROLLER SUIT HONEYBEE N/H 68.75" BELT 63MM X 1619MM

HBCIR1619

- Honeybee Grain Belt Header GBH21, Rice 25FT 30FT 36FT 40FT 42FT, New Holland 88C30P 88C36P 88C42P 88C45P



34" X 66" CENTRE FEED BELT

B1003121

- Honeybee various



69" X 65" CENTRE FEED BELT

B1003122

- Honeybee various



68.75" X 63" CENTRE FEED BELT

B1006090

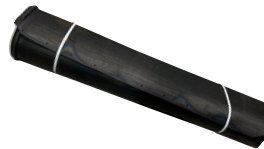
- Honeybee various



41.56" X 65" CENTRE FEED BELT

B1008587

- Honeybee various



79.75" X 69" CENTRE FEED BELT

B1013724

- Honeybee various



DRAPER BELT 41.6"

BSCAG-MD41.6SV

- Honeybee 994 94C 92C various



41.75IN DRAPER BELT SIDE V GUIDE HONEYBEE

B1008803WCC



DRAPER BELT DRIVE ROLLER SUIT HONEYBEE N/H 41.75" BELT 76MM X 1072MM

HBDR1072

- Honeybee Sp/ST Swather, GBH 18FT 21FT 25FT 30FT 36FT 40FT 42FT New Holland 92C 94C



DRAPER BELT DRIVE ROLLER SUIT HONEYBEE N/H 42" BELT 63.5MM X 1080MM

HBDR1080

- Honeybee GBH 14FT 18FT 21FT 25FT 30FT 36FT 39FT 42FT, Swather 18FT-36FT New Holland HB 18-36FT 92C 94C 994 994D



**DRAPER BELT IDLER ROLLER
SUIT HONEYBEE N/H 41.75"
BELT 63MM X 1009MM**

HBIR1009

- Honeybee GBH 18-42FT New Holland 880CF 88C [30,36,42,45FT]



**DRAPER BELT IDLER ROLLER
SUIT HONEYBEE N/H 42" BELT
63MM X 1063MM**

HBIR1063

- Honeybee GBH 21-42FT



**REEL TINE FINGER DOUBLE
WING 6" SPACED 35MM
TUBES**

A-783597

- Various Case New Holland John Deere AGCO Honeybee



**1765MM CENTRE FEED DRIVE
ROLLER LENGTH**

HBCDR1765

- Honeybee 41.75



**1619MM CENTRE FEED IDLER
ROLLER LENGTH**

HBC1619

- Honeybee 41.75



21.75" X 60.13" 1015 PICKUP BELT WITH TEETH

BSCAG-1000872

- Case 1015



2015, PW7, PHILLIPS SWATHMASTER FRNT BELT

B1002970F

- Case 2015
- Phillips Swathmaster
- NH 76C
- Macdon PW7
- AGCO 420 4000 4200



BACK BELT C/W 1/4IN SLEATS 18.75X57.75IN

A-1002969

- Case 2015
- Phillips Swathmaster
- NH 76C
- Macdon PW7



B4000-0521 CASE/SMASTER

B4000-0521

- Case 2015
- Phillips Swathmaster
- NH 76C
- Macdon PW7



59.64" X 54.67" FRONT PICKUP COMPLETE WITH FINGERS

BSCAG-1012062F

- Case 3016
- NH 790CP



DBL PRONG UP TEETH [SUIT VARIOUS FRONTS]

B1700575W

- All Models



PICK UP BOLT ONLY

BEBHISQ0403CP

- All Models



PICK UP NUT ONLY

BNFLO4CP

- All Models



JOHN DEERE 615P

AXE73124

- John Deere 615P front drive roller with Lagging



JOHN DEERE 615P

AXE73123

- John Deere 615P Idler roller no lagging



**COUNTRYWIDE REAR
17.5" X 53.5"**

1002713

- Countrywide



JD 214/914 PUP 22" X66.53

B1000863F

- JD 219/914



**CANOLA BELT BOLT
JOINER KIT**

B1002682

- Various



**COUNTRYWIDE PUP FRONT
17.5" X 53.5" CW FINGERS**

B1003114F

- Countrywide



**JD615P FRONT BELT WITH
TEETH 44.48 X 57.3**

B1010700F

- JD615P



**JD615P REAR BELT
44.48" X 67.71"**

1012624

- JD615P



**37.75" X 57.75" ROLLERDOWN
CANOLA FRONT BELT FITTED**

BSCAG-B1008377F

- Phillips Rollerdown
- Canola Front Belt



**CENTRE SUPPORT THRUST
ROLLER**

BSCAG-STR

- Case 2015 Macdon PW7 Swathmaster



**CASE 3016 CANOLA PICKUP
L/H ROLLER WITH LAGGING
2403MM LONG**

84205967

- Case 3016



**CASE 3016 CANOLA PICKUP
R/H ROLLER WITH LAGGING
2322MM LONG**

84205968

- Case 3016



**MIDWEST CENTRE FEED BELT
KIT 60X55IN**

BSCAG-1009399

- Crophawk, Duras



1008793 36" CENTRE V GUIDE

BSCAG-MW36

- Crophawk, Duras



CENTRE FEED DRIVE ROLLER

118-40071-09

- Midwest Crophawk (2011-2012) & Duras



BANDED BELT

4/B77GAT



BANDED BELT

4/B78GAT



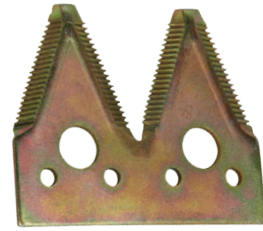
TIMING BELT MIDWEST

14MGT-3500-37



TIMING BELT MIDWEST

14MGT-3500-68



FINE TWIN CUT KNIFE SECTION H153329

207-010.4

- JD 600 700 900 series



CENTRE COUNTERSUNK FINE SECTION

207-583

- JD 600 700 900 series



CENTRE FEED BELT 44" X 55"

B1008103

- Midwest Crophawk narrow body 818-00056-06



GRAIN HEAD CUTTER BAR KNIFE SECTION

WN-10961

- MIDWEST CROP HAWK



COARSE GRAIN HEAD CUTTER BAR KNIFE SECTION

WN-10978

- MIDWEST CROP HAWK



REEL CAM FOLLOWER

A-AH169497

- DURAS 2013 2014 2018 113-40046-13



JOINER & HARDWARE KIT

A-1003863

- MIDWEST CROP HAWK



KNIFE DRIVE BEARING

FC12025S09SNR

- MIDWEST 884-05225-01



**RETRACTABLE FINGER GUIDE
INNER PLATE**

71320326

- MIDWEST CROPHAWK DURUS



**RETRACTABLE FINGER GUIDE
OUTER PLATE**

71320327

- MIDWEST CROPHAWK



**RETRACTABLE FINGER GUIDE
NYLON**

71320323

- MIDWEST CROPHAWK



**REEL, FINGER HOLDER
BEARING**

WN-AH107066

- Midwest crophawk Durus



260MM RETRACTABLE FINGER

1144005106

- Midwest crophawk durus



**MIDWEST TAPER LOCK BOSS
SUIT 118-40072-09 ROLLER**

1184007209

- Midwest Crophawk, Duras, Duras
Premium



**MIDWEST DRAPER IDLER
ROLLER SUIT DURUS**

1184007511

- Midwest Crophawk, Duras, Duras
Premium



**REEL TINE FINGER DOUBLE
WING 6" SPACED 35MM
TUBES**

A-783597

- Various Case New Holland John Deere
AGCO Honeybee



**41" RAPTOR DRAPER BELT
FLAT BACK**

B1008804

- AGCO various



**41" RAPTOR DRAPER BELT
CENTRE V-GUIDE 60MM
OFFSET**

B1011097

- MF5300 AGCO various



**41" RAPTOR DRAPER BELT
WITH V-GUIDE**

B1009826

- MF9250 AGCO various



**60" X 57.46" CENTRE FEED
BELT**

B1005373

- AGCO various



**51.5" X 62.99" CENTRE FEED
BELT**

B1009830

- Massey Ferguson various



**39.88" 11 HOLE DRAPER BELT
JOINER**

B1009832

- 41" draper belt



**40" 11 HOLE DRAPER BELT
JOINER**

B1003556

- 41.75" draper belt



**DRAPER BELT JOINER- AGCO
[40.5" 8 HOLES]**

B1002752WCC

- AGCO front



ESCORT VEHICLE PILOT SIGN KIT, OVERSIZE LOAD AHEAD

VS-PILOT-01

- With Lights & Frame



ESCORT VEHICLE PILOT SIGN KIT, OVERSIZE LOAD AHEAD

VS-PILOT-02

- With Upgraded LED Lights & Frame



ESCORT VEHICLE PILOT SIGN KIT, OVERSIZE LOAD AHEAD

VS-PILOT-03

- Motorised With Upgraded LED Lights & Frame



OVERSIZE SIGN

VS001-052ALU

- 1200 x 450mm
- Class 2 Reflective Aluminium



OVERSIZE SIGN

VS-OVERBAN01

- 1200 x 450mm
- Class 2 Reflective, Vinyl Banner



FARM GATE SIGN

S6327-036MET

- 600 x 600mm
- Metal



PREMIUM MESH TYPE OVERSIZE FLAG

VS-PREM-OF1

- With Flexible Plastic Pole



PREMIUM MESH TYPE OVERSIZE FLAG

VS-PREM-OF2

- With Rope



PREMIUM MESH TYPE OVERSIZE FLAG

VS-PREM-OF3

- With Stretch Strap & Karabiners



STOCK AHEAD (SHEEP & CATTLE PICTO + AHEAD TEXT)

S6330-036MET

- 600 x 600mm
- Metal



STOCK AHEAD (SHEEP & CATTLE PICTO + AHEAD TEXT)

S6330-036COR

- 600 x 600mm
- Corflute



STOCK (SHEEP & CATTLE PICTO) NEXT 5KM SIGN

S6331-036MET

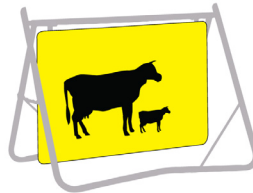
- 600 x 600mm
- Metal



STOCK (SHEEP & CATTLE PICTO) NEXT 5KM SIGN

S6331-036COR

- 600 x 600mm
- Corflute



STOCK AHEAD (SHEEP & CATTLE PICTO)

SSS-T1-19C

- 600 x 600mm
- Metal
- Class 1 Reflective
- Swing Stand & Sign



FARM BIOSECURITY SIGN (NOT COMPLIANT IN NSW)

S6811-002MET

- 600 x 400mm
- Metal



FARM BIOSECURITY SIGN (COMPLIANT IN NSW)

S6812-002MET

- 600 x 400mm
- Metal



RESTRICTED AREA KEEP OUT

S6907-002MET

- 600 x 400mm
- Metal



DO NOT OPERATE THESE MACHINES WITHOUT GUARDS IN PLACE

S4004-002MET

- 600 x 400mm
- Metal



PINCH POINT CAN CAUSE SEVERE PERSONAL INJURY

- S4005-002MET
- 600 x 400mm
 - Metal



DO NOT WATCH WELDING ARC

- S4020-005MET
- 400 x 300mm
 - Metal



DANGER CHEMICAL STORAGE

- S2077-002MET
- 600 x 400mm
 - Metal



DANGER DIESEL FUEL

- S2063-002MET
- 600 x 400mm
 - Metal



DANGER PESTICIDE STORAGE AUTHORISED PERSONNEL ONLY

- S2125-002MET
- 600 x 400mm
 - Metal



NO ENTRY AUTHORISED PERSONS ONLY

- S3001-002MET
- 600 x 400mm
 - Metal



NO SMOKING

- S3061-002MET
- 600 x 400mm
 - Metal



DANGER OVERHEAD POWERLINES HEIGHT __M

- S2020-002COR
- 600 x 400mm
 - Corflute



FIRST AID

- S5001-002MET
- 600 x 400mm
 - Metal



**EMERGENCY ASSY AREA
600X400MM METAL**

- S5012-002MET
- 600 x 400mm
 - Metal



HAZCHEM

- S7026-027MET
- 600 x 150mm
 - Metal



**HEARING & EYE PROTECTION
MUST BE WORN IN THIS AREA**

- S1001-002MET
- 600 x 400mm
 - Metal



**RESPIRATOR MUST BE WORN
IN THIS AREA**

- S1009-002MET
- 600 x 400mm
 - Metal



**SECURITY WARNING THIS
PROPERTY IS PROTECTED BY
GUARD DOGS**

- S6502-002MET
- 600 x 400mm
 - Metal



**FIRE EXTINGUISHER (WITH
PICTO)**

- S5231-008POL
- 225 x 225mm
 - Off Wall Poly



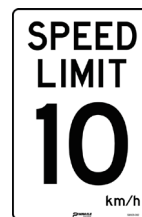
**FIRE EXTINGUISHER (WITH
PICTO)**

- S5203-005POL
- 400 x 300mm
 - Poly



**SECURITY NOTICE
SURVEILLANCE CAMERAS IN
USE**

- S6508-005MET
- 400 x 300mm
 - Metal



SPEED LIMIT 10KM/H

- S8929-002MET
- 600 x 400mm
 - Metal



SPEED LIMIT 25KM/H

- S8928-002MET
- 600 x 400mm
 - Metal



NO ENTRY

- S8801-002MET
- 600 x 400mm
 - Metal



CAUTION SNAKE SPOTTED

- AFM-02-S4146
- 600 x 450mm
 - Double Sided
 - Metal A-Frame



ON THIS SITE EAR/EYE HARDHAT BOOT HIVIS

- S1054-001MET
- 600 x 600mm
 - Metal



DANGER CONFINED SPACE ENTRY BY PERMIT ONLY

- S2025-007MET
- 300 x 200mm
 - Metal



DANGER ELECTRIC FENCE KEEP OFF - KEEP AWAY

- S2105-007POL
- 300 x 200mm
 - Poly



SECURITY WARNING ELECTRONIC SURVEILLANCE...

- S6501-002MET
- 600 x 400mm
 - Metal



DRIVER SAFETY ZONE DRIVER MUST REMAIN IN...

- S8941-002MET
- 600 x 400mm
 - Metal



PIN SIGN OVERSIZE LOAD AHEAD DBL SIDED ALUM CL2

- VS005-055ALU
- 1200 x 600mm
 - Double Sided
 - Aluminium

Retail Display Stands



Option 1

Agricultural & Farm Stand



Option 2

Warehouse & Site Stand



Retail Display Stands

- ✓ Reduce Stock Damage and Scratching
- ✓ Store and Display Signs Neatly and Professionally
- ✓ Increase Impulse Buying
- ✓ Fits Most Common Sign Sizes
- ✓ Sturdy Steel Construction
- ✓ Excellent Starter Range Featuring Our Most Popular Signs

Option 1	Sign QTY	RRP Price
Agricultural & Farm Stand	102 Signs	\$2,485.00 + GST

Option 2	Sign QTY	RRP Price
Warehouse & Site Stand	134 Signs	\$2,480.00 + GST

NOTES



A series of horizontal dotted lines providing a template for handwritten notes, filling the majority of the page area.



CFP-0016/25

iMOTION

Delivering a world-class customer-first approach providing excellence and expertise in industrial products, solutions and services.

iMOTION
FLUID POWER SOLUTIONS

Specialists in Fluid Power Solutions tailored to keep your equipment moving.

iMOTION
ENGINEERING & SERVICES

Specialist design and engineering, manufacturing, repair and maintenance services.

Anytime.Anywhere.
Always Here.™



Find a location near you!

Scan the QR Code to find out more
or visit Motion.com.au