

24/7 workbench

JULY – SEPTEMBER 2026

WIN

A WEBER® Q®+ GAS BARBECUE



VALUED
AT
\$589

**PURCHASE ANY
FEATURED SKF
PRODUCT FOR
YOUR CHANCE
TO WIN!**



SCAN TO ENTER!

Starts 9:00 AM AEST 6/7/26. Ends 7:00 PM AEST 30/9/26. Open to AUST residents who fulfil the entry/eligibility requirements. Purchase any SKF product in the current Workbench catalogue for automatic entry (account customers only) or enter at motion.com.au (cash customers). Retain receipt. Prize is a Weber Q + Gas BBQ valued at \$589. Total prize pool is \$589 (inc GST). Prize draw 3:00 PM AEDT 15/10/26. Winner notified via email & phone by 16/10/26 and published at motion.com.au on 21/10/26. Promoter is Motion Australia Pty Ltd. ABN 32 000 143 608. 18 Worth St Chullora NSW 2190. For full T&Cs refer to motion.com.au.

**SHOP ONLINE
WITH US 24/7**

MOTION
Motion.com.au

CONTENTS

LOCTITE

3

CRC

4

SKF

5



6

The Glove company

6

GENTECH
Generators you can trust

7

W&C WELLING & CROSSLEY

7



7

Devcon

8

EPIREZ

8

Chemtech
MADE TO WORK

8

ROCOL

8

Ti TAN
LIFTING TECHNOLOGIES

9

FANMASTER
COOLING HEATING VENTILATION EXTRACTION

10

TOOLS4INDUSTRY

10

m macnaught

11

TIMKEN

12

3M

13

UNIMIG

14

ENERPAC

14

inox

14

Gates

15

SUPER SPECIALS

16-18



19

LOCTITE

LOCTITE® PC 9410 Magna Crete

Magnesium phosphate-based rapid setting concrete repair and grouting system that outperforms conventional concrete repairs. Bonds to concrete and most construction materials including wood and steel.

- Bonds to new and old concrete
- Can be driven within 45 minutes
- Rapid setting
- Non-shrink



9410-18.9L

LOCTITE® EA 3463™ Repair Epoxy Stick

A 2-part, steel-filled epoxy repair putty that is easy-to-use and stops leaks in pipes and tanks, fills oversized bolt holes, smooths welds, and repairs non-structural defects in castings or holes in tanks.

- Ideal for restoring metal parts worn by mechanical and/or corrosion
- Cures in 10 minutes
- When cured it has a high compressive strength and good adhesion to most surfaces

\$23⁵⁰



3463-113G

LOCTITE® EA 3478™ Superior Metal

A 2-part, ferro-silicon-filled epoxy resin system that is extremely resistant to corrosion, chemical attack and abrasion

- Ideal for restoring parts worn by mechanical impact and/or corrosion
- Restores tolerances to worn shafts, keyways and bearing housings, repairs damaged housings, and fills pitted surfaces in worn machinery



3478-1KG

LOCTITE® EA 3473™ Fast Set Steel Putty

A 2-part, steel-filled, epoxy that repairs worn, broken or damaged parts such as shafts, housings, keyways, pipes and flanges. Ideal for emergency repairs

- Hardens in 10 minutes
- Used to fill cavities, repair stripped threads and cast steel, level machinery, form core moulds, apply sacrificial coatings, and seal leaking pipes.



3473-500G

LOCTITE® PC 7350™ Conveyor Belt Repair

A 2-part fast-curing, high-strength, self-levelling, polyurethane repair material with excellent adhesion and flexibility. Ideal for quick on-site repairs of conveyor belts, rubber liners and other rubber parts.

- Easy-to-use system
- Excellent tear strength and flexibility
- High peel strength

\$199



7350-400ML

LOCTITE® PC 9593 High Impact Fast Curing Wearing Compound

A 2-part ceramic and silicon carbide-filled 100% solids epoxy designed to protect, rebuild, and repair processing equipment exposed to wear and impact, including pump liners, flumes, troughs, feeders, chutes, and hoppers.

- Outstanding resistance to impact and wear
- Functional cure in 4 hours

\$280



9593-3KG

LOCTITE® PC 7218 Wearing Compound

2-Part ceramic filled epoxy paste designed to protect, rebuild and repair high wear areas of processing equipment from coarse abrasion and erosion including cyclones, dust collectors, pump components, fan blades, chutes, hoppers, and pipe elbows.

- Easy to mix and apply, trowelable and non-sagging
- Renews worn surfaces fast
- Australian made



7218-10KG

LOCTITE® PC 9313 High Impact Wearing Compound

A grey, 2-part rubber-modified epoxy designed to protect flumes, troughs, elbows, hoppers, and chutes from abrasion and impact in temperatures from -29°C to 121°C.

- Cures to ceramic hardness
- Won't sag or shrink
- Renews worn surfaces fast

\$1,029



9313-11.34KG

LOCTITE® LB 8009 Heavy Duty Anti-Seize

100% metal-free lubricant to protect multiple types of metal fasteners against corrosion and seizure and keep machines running efficiently, even at extremely high temperatures up to 1315°C.

- Fortified with graphite and calcium fluoride

\$64



8009-500G



CRC Food Grade Silicone 283g

A multi-purpose dry film silicone spray for use on food processing and handling equipment.

- NSF H1 Registered for incidental food contact
- Dry film - does not attract dust and product debris

\$23



FG03040CRC

CRC Food Grade Chain Lube 340g

A special blend of mineral oil and synthetic additives, designed to keep roller drive and conveyor chains lubricated.

- NSF H1 Registered for incidental food contact
- Non-drying film effectively lubricates metal surfaces

\$34



FG03055CRC

CRC Food Grade Bio Degreaser

A high-performance, next-generation degreaser that is pH neutral and safe for surfaces, users and the environment. Biodegradable, non-hazardous, non-flammable and water soluble.

- Safe on most materials

From **\$16**



FG05167CRC	750mL	\$16
FG05171CRC	5L	\$52
FG05172CRC	20L	\$199

CRC Penetr8 400g

Industrial-strength, low-viscosity lubricant and penetrant that quickly loosens seized, bound or frozen fasteners. Its low surface tension formula penetrates rust, scale, gum, grease and corrosion, creeping into cracks, seams, threads and joints for greater efficiency.

- Extreme penetrating action

\$29



5501CRC

CRC Dry Glide 150g

High-performance dry film lubricant that cures to a clean, non-staining micro-thin layer. Bonds to most surfaces for long-lasting lubrication where wet lubricants fail, sealing out moisture and resisting corrosion, oil, dust, and dirt.

- PTFE-based - Provides reliable lubrication across a wide temperature range

\$23



3040CRC

CRC NF Aeroclean Degreaser 400g

A non-flammable degreaser that delivers a concentrated jet to remove oil and grease from a wide range of surfaces. It leaves a detergent film that emulsifies remaining contaminants when flushed with water.

- Spray on - Hose off: Quick and easy to use formula
- Ideal for areas with low ventilation

\$18



1757385CRC

CRC CO Contact Cleaner 350g

A unique, plastic safe, scientifically formulated, technically proven, stable, inert high purity cleaning solvent. Non-corrosive, non-staining, rapid complete evaporation and contains no lubricants.

- Residue free
- Eliminates rinsing or wiping

\$22



2016CRC

CRC Brakleen

Recommended for the cleaning and effective removal of grease and oil from components.

- Fast evaporation
- Minimises downtime associated with 'clean-in-place' cleaning methods
- Residue free
- Non-staining, and non-corrosive

From **\$12**



5089CRC	500g	\$12
5091CRC	20L	\$278

CRC 808 Silicone Spray 330g

Multi-purpose silicone spray with a non-corrosive formula that leaves a thin, clear, odourless film. It lubricates, protects, and stops squeaks and binding caused by friction, and works effectively as a mould release.

- Clear, non-staining
- Reduces friction and wear

\$19



3055CRC

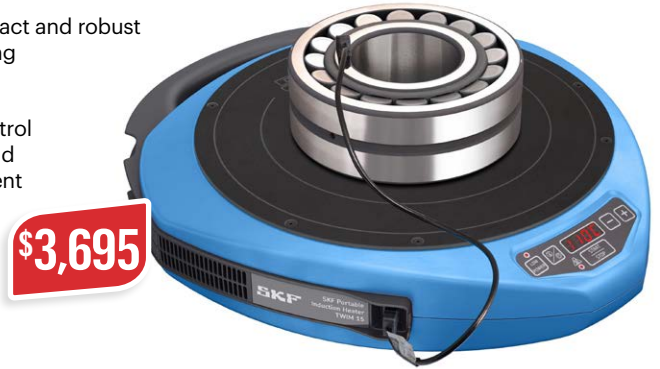


Portable Induction Heater

The TWIM 15 is a portable and robust induction heater that is designed for safe bearing heating for hot mounting. This compact heater is especially suitable for usage in the field, yet it is compact and versatile for usage on workbenches.

The heater utilises a smart construction and operating software to optimise the bearing heating safety and speed for bearings weighing up to 20 kg. The heater has different power modes to support heating of sensitive bearings (e.g. with reduced clearance) and non-bearing components.

- Portable, lightweight, compact and robust
- Smart and innovative bearing heating technology
- No support yokes required
- Automatic temperature control
- Detection of bearing size and automatic heating adjustment



TWIM15SKF

Small Induction Heater

The small induction heater and is designed for the hot mounting of bearings. This compact heater is ideal for use on workbenches, yet it can be easily carried for on-site applications. Supplied with three yokes and foldable support arms, the heater is capable of heating bearings with a bore diameters of 20 mm or more and with a maximum weight of 40 kg.

- Easy and safe to use with automatic temperature control or time controlled heating
- Automatic demagnetisation reduces risk of bearing contamination
- Suitable for solid, non-bearing workpieces up to 20 kg
- Automatic temperature hold function to keep the bearing hot after completion of the heating cycle



TIH030M/230V

Medium Induction Heater

The SKF TIH 100M is a medium sized induction heater and is designed for the hot mounting of bearings. The heater is supplied with a swivel yoke and two optional yokes for smaller bearings. The TIH 100M can heat small bearings with a bore diameter of just 20 mm and larger bearings with a maximum weight of 120 kg.

- Supplied with a swivel yoke and two smaller yokes, located in an integrated storage compartment
- Easy and safe to use with automatic temperature control or time controlled heating
- Automatic demagnetisation reduces risk of bearing contamination
- Suitable for non-bearing applications for workpieces weighing up to 60 kg
- Automatic temperature hold function to keep the bearing hot after completion of the heating cycle



TIH100M/230V



40 Pce Met/SAE Std/Deep Impact Socket Set

- Standard: 8-24, 26, 27 & 30mm
- Deep: 8-24, 26, 27 & 30mm
- Includes: Adapter, Extension & Carry Case



\$299

SP20322

2 Shelf Off-Road Series Truck Box (1350mm)

- Designed for and built to last on the back of work vehicles
- Extreme-duty, high-quality fully welded steel box frame and shelf construction using 3mm, 2mm & 1.4mm steel for increased durability and strength



\$1,499

SP40342

5 Drawer Heavy Duty Off-Road Series Tool Box

- Designed for and built to last on the back of work vehicles
- Extreme-duty, high-quality fully welded steel box frame and drawer construction using 2mm & 1.5mm steel for increased durability and strength



ALSO AVAILABLE IN TOOL KIT

\$1,995

SP40315

3 HP Triple Cast Iron Industrial Air Compressor Belt Drive

- Max Pressure: 150 PSI
- Tank Capacity: 100L
- Wheels: 200mm Solid Rubber
- Handle: Detachable
- Safety Valve: Certified
- Non-Return Valve: Full Brass
- Power Requirement: 15 Amp



\$1,789

SP1800

888 Tools 3/4Dr Socket Set

- 12 point 26pc
- Metal carry case
- Ideal for applications where jumbo sockets are required
- Flat drive technology offers maximum contact and grip



\$329

T820400

4 Drawer Heavy Duty Off-Road Series Truck Box

- Heavy duty fully welded steel frame (3.0mm, 2.0mm & 1.4mm)
- Sealed roller bearing drawer slides, 55kg rating per drawer (90mm clearance)



ALSO AVAILABLE IN TOOL KIT

From **\$2,395**

SP40332 1370mm **\$2,395**
SP40333 1760mm **\$2,795**



TGC Black Nitrile Gloves 100 Pack

- High-performance tough nitrile gloves, enhanced with Low Sweat Technology for dry comfort all day. With Anti-static properties and ultimate chemical resistance.
- Ultra Tough, fully textured, chemical resistant



160001 S
160002 M
160003 L
160004 XL

\$27.50 EA

Heavy Duty Blue Nitrile Gloves 50 Pack

Crafted from a strong heavy-duty nitrile material that is finger textured. These gloves are designed for the automotive, industrial, building, coatings & mining sectors.

- HACCP Certified for food production and maintenance
- Long cuff for lower forearm protection



170401 S
170402 M
170403 L
170404 XL

\$9.65 EA

Orange Rocket Xtra Grip® Nitrile Gloves 50 Pack

Feature extra technology-enhanced texture. Unrivalled grip and visibility for oil, hydrocarbons and other slippery surfaces.

- Durable Nitrile with UNRIVALLED Grip
- Hi-Vis colouring prevents cross contamination and increases visibility in low lighting



NEW AND IMPROVED!

\$16.95 EA

131042 M
131043 L
131044 XL
131045 XXL

Blue Heat Heat Resistant Gloves

This lightweight heat tested glove is the everyday solution to temperature affected items up to 150°. Made from comfortable, cool cotton and coated with super wrinkle finish latex that minimises the contact surface area of the glove on high temperature items.

- Latex dipped for the ultimate grip



710401 S
710402 M
710403 L
710404 XL
710405 XXL

\$6.10 EA

Komodo Safety 1 Gloves

The perfect low-cost solution for anyone who needs hand protection. The perfect all Rounder!

- Lightweight and ultimate dexterity for fiddly work
- Chemical resistant, long lasting PU coating



620401 S
620402 M
620403 L
620404 XL
620405 XXL

\$2.65 EA

Komodo Vigilant 5 Gloves

Hi-Vis red for identification in high risk areas. Special lightweight and breathable fabrics for comfort and durable protection.

- Touchscreen compatible for ease of work
- Sweat wicking fibres for added comfort
- Level 5 Cut Resistance



630601 S
630602 M
630603 L
630604 XL
630605 XXL

\$14.30 EA



3.4kVA Honda® Powered GX200 Petrol Generator

A hard working, light weight generator ideal for small appliances and hand tools.

- 3.1L Capacity
- 2 x 15A outlets



EP3400HSRGTE

From \$1,299

8kVA Honda® Powered GX390 Petrol Generator

A popular choice for farmers and builders for when an economical and hard working power source is needed to get the job done.

- 6.1L Capacity
- 2 x 15A outlets



EP8000HSRGTE Recoil \$2,745
EP8000HSREGTE Recoil & E-Start \$3,399

From \$2,745

8kVA Honda® Powered GX390 Petrol Generator with RCD Outlets

8 kVA Honda Powered Generator complete with all the extras suitable for work site usage. Featuring Work Safe approved RCD-protected outlets for prevention of electric shocks or equipment damage.

- 6.1L Capacity
- 2 x RCD Protected 15A outlets, 1 x 32A Circuit Breaker



EP8000HSR-RCD-V2 Recoil \$3,099
EP8000HSRE-RCD-V2 Recoil & E-Start \$3,739

From \$3,099



Portable Power Station 1,200W 1,152Wh

A lightweight, easy-to-carry power station with advanced LiFePO4 battery technology for extra safety. From worksites and farms to weekend getaways, it's built to deliver silent and dependable power for tools, appliances or essential devices.

- AC, DC, USB-A, USB-C and wireless outputs
- AC and solar charging inputs



WC-BG1200

From \$1,199

3.75 kVA (3,200W) Open Frame AVR Petrol Generator with E-Start

An AVR (automatic voltage regulated) generator with E-start. Supplied with transport kit (handles and wheels), this generator is Euro 5 emissions compliant.

- 15L Capacity
- 2 x IP66 15A; USB-C, USB-A outlets



AVR-WC-P3750

From \$1,099

8.75 kVA (7,000W) Open Frame AVR Petrol Generator with E-Start

An AVR (automatic voltage regulated) generator with E-start.

The optional RCD (Residual Current Device) version provides an added layer of electrical safety to protect both users and equipment.

- 25L Capacity
- 2 x IP66 15A; USB-C, USB-A outlets
- Includes a transport kit



AVR-WC-P8750 - \$1,769
AVR-WC-P8750RCD with RCD \$1,959

From \$1,769



Copper Hammers

An excellent Dual-Purpose soft faced hammer for many engineering & industrial applications. The Copper face combined with the malleable iron head gives a SAFE but high-impact blow.

- Ideal where a heavy blow is required combined with a relatively small striking area
- Replacement faces available



TH310THO 32mm 830g \$82
TH312THO 38mm 1,260g \$115
TH314THO 44mm 1,940g \$149
TH316THO 50mm 2,830g \$229

From \$82

Copper/Rawhide Hammers

The Copper face combined with the malleable iron head gives a SAFE but high-impact blow, whilst the hide face gives a firm resilient blow that will not mark the finished work.

- Ideal where a heavy blow is required combined with a relatively small striking area
- Replacement faces available



TH210THO 32mm 710g \$90
TH212THO 38mm 1,070g \$125
TH214THO 44mm 1,600g \$157
TH216 50mm 2,380g \$219

From \$90

Deadblow Nylon Hammers

Due to the easily interchangeable faces, these hammers are ideal as a multi purpose striking tool, for sustained and effective blows without recoil. Used in most assembly/fitting applications including engineering, toolmaking, shopfitting, partitioning, double glazing etc.

- Prevents rebound and delivers 'dead' blows of maximum force without damaging the workpiece
- Replacement faces available



TH1212NTHO 38mm 700g \$90
TH1414NTHO 44mm 900g \$105
TH1616N 50mm 1,150g \$121
TH2020NTHO 63mm 1,850g \$175

From \$90



Plastic Steel Putty - 500g

Steel-filled epoxy putty for repairing, rebuilding, and bonding metal surfaces.

- Bonds to steel and many other metals, as well as concrete
- Machinable
- Applies easily - no special tools required

\$157



D10110DEV

Aluminium Putty - 500g

Aluminium filled epoxy putty for rebuilding and repairing aluminium castings, parts and equipment.

- Bonds to aluminium and many other metals, as well as concrete
- Makes repairs that are non-rusting



\$170



D10610DEV



High Performance Epoxy Grout - 30kg

High-strength epoxy grout with extended work time for high temperatures and deep pours.

- Bonds to damp surfaces
- High mechanical strength
- Excellent flow
- Excellent chemical resistance

\$1,290



E991199EPI



CT18 Superwash - 20L

A powerful concentrated cleaning gel that removes tough dirt, grease, grime, and bugs, leaving a streak-free shine on all surfaces.

- pH neutral
- Apply as spray, foam or by hand
- Super concentrated formula

\$109



CT18-20LCTH

CT20 Wash & Wax - 20L

A concentrated gel that cuts through tough road grime, leaving a streak-free, mirror-like shine on all vehicles.

- pH neutral
- Protects from rust
- Safe for all painted metallic finish and clear coated surfaces
- Leaves a streak free coating

\$129



CT20-20LCTH



Epirez Safe Step 100 - Safety Yellow - 4L

Single-component epoxy ester non-slip coating for heavy pedestrian traffic areas.

- Single component - no mixing required
- Easily applied - by brush or roller
- Excellent anti-slip properties
- Suitable for concrete, asphalt, timber and all metal surfaces
- Other colours available

\$270



E460006EPI



Food Safe Chain Lube - 20L

Water-resistant, non-toxic lubricant for chains and bearings in clean industry environments.

- Will not wash off during cleaning operations
- Penetrates rapidly into pins and bushes

\$868



RY443934

Wire Rope Grease - 20kg

Semi-fluid grease with lubricating solids and molybdenum disulphide for wire ropes, providing lubrication and corrosion protection in all conditions, including marine environments.

- Provides high load carrying capacity
- Repels water
- Rapidly penetrates wire ropes
- Provides excellent anti-wear properties

\$854



RY453291

Bakers Mate - 20L

Non-toxic, high-grade, water-based graphite lubricant for bakery oven chains.

- Operates at temperatures up to 600°C
- Graphite remains in suspension
- Can be applied when the chain is still warm
- Can be diluted up to 1 part with five parts of water
- Penetrates rapidly

\$749



RY446320

TITAN LIFTING TECHNOLOGIES

Forged Eye Tow Hook

G70 eye forged tow hook.

- Pulling/Lashing capacity 2.5TN
- Batch marked for tracability
- Complies with AS4344

\$39



FTH-025TTN

Double J Hook Ratchet Tie down LC2500kg

- 6m x 50mm ratchet tie down with j hooks
- Lashing capacity 2.5TN
- Ideal for trailers, truck, utes and shipping containers
- 9M length also available

From **\$29**



WRSJ506-25TTN 2.5TN 50mmx6mtr **\$29**
WRSJ509-25TTN 2.5TN 50mmx9mtr (Blue) **\$33**

Grade S Screw Pin Dee Shackle

- Great for lifting or securing load and towing restraint

From **\$2**



SSD0033TTN 330kg **\$2**
SSD005TTN 500kg **\$2.50**
SSD0075TTN 750kg **\$2.75**
SSD010TTN 1TN **\$3**
SSD015TTN 1.5TN **\$4**
SSD020TTN 2TN **\$6**

Drum Clamp

55 Gal/200L Lifting drums up to 500kg.



\$185

CMPHD005TTN Horizontal **\$185**
CMPVD005TTN Vertical **\$185**

Grade 80 Weld-On D-Ring

Used as a fixed anchor point for general lifting applications.

- 100% Magnaflux crack detection
- Welding to any carbon steel surfaces
- Complies with AS3776/EN1677
- Welding Instructions provided
- NB: Other capacities also available

From **\$25**



T344WODR-2TTN 2TN **\$25**
T344WODR-3TTN 3TN **\$30**
T344WODR-5TTN 5TN **\$35**

Titan Lever Hoist

- Suitable for all applications - high and light end industries
- Proof tested 1.5 x WLL
- Complies with AS/NZS1418, including all world standards
- Reliable and durable of withstand high usage, serviceable and spare parts available
- Additional capacities and lengths available eg. 1.6TN and 3.2TN in 1.5 and 3m

From **\$139**



TLH0215TTN 250kg 1.5m **\$139**
TLH0515TTN 500kg 1.5m **\$179**

Titan Chain Block

- Suitable for all applications - high and light end industries
- Proof tested 1.5 x WLL
- Complies with AS/NZS1418, including all world standards
- Reliable and durable to withstand high usage, serviceable and spare parts available
- Additional capacities and lengths available eg. 2TN and 3TN in 3 and 6m

From **\$185**



TCB0053TTN 500kg 3m **\$185**
TCB0103TTN 1TN 3m **\$195**
TCB0056TTN 500kg 6m **\$229**
TCB0106TTN 1TN 6m **\$259**

Titan Hand Brake Winch, Yellow Powder Coated

3 Capacities available for lifting/pulling

- Yellow powder coated finish
- Compact design
- Suitable for general workshop applications
- Complies with AS/NZS 1418.2
- Comes without rope
- NB: Can be fitted with wire rope at an additional charge

From **\$104**



THBW545/270TTN 545/270kg **\$104**
THBW820/410TTN 820/410kg **\$199**
THBW1200/600TTN 1200/600kg **\$229**

Titan Hand Brake Winch, Stainless Steel

3 Capacities available for lifting/pulling

- Stainless grade 304
- Compact design
- Automatic braking system
- Complies with AS/NZS 1418.2
- Comes without rope
- NB: Can be fitted with wire rope at an additional charge
- Suitable for general workshop applications

From **\$359**



THBW545/270SS 545/270kg **\$359**
THBW820/410SS 820/410kg **\$659**
THBW1200/600SS 1200/600kg **\$759**



Louved Wall Exhaust Fan

- 240V Hardwired
- Gravity louvres to stop rain & reverse airflow
- Perfect for workshops & garages

From **\$169**



IWEL200FMA	200mm	8	\$169
IWEL300FMA	300mm	12	\$209
IWEL400FMA	400mm	16	\$299

Industrial Diesel Radiant Heater

- 240V 3 Pin 10A Plug
- Adjustable temperature
- Diesel or Kerosene
- Tank capacity: 10.5L (20kW) 38L (40kW)
- Ceramic fibre combustion chamber
- Easy installation
- Cut off protection

From **\$899**



HDR20FMA	20kW	\$899
HDR40FMA	40kW	\$1,799

Industrial Diesel Fan Heater

- 240V 3 Pin 10A Plug
- Heats up to 200m² (20kW), 300m² (30kW) & 500m² (50kW)
- Digital display for room & setting temperature
- Durable tough wheels
- Runs off diesel or kerosene

From **\$579**



IDH3-20FMA	20kW	\$579
IDH3-30FMA	30kW	\$679
IDH3-50FMA	50kW	\$859

Electric Radiant Heater Carbon Fibre 2000W

- 2000W 220-240V 3 Pin 10A Plug
- Filament: Carbon Fibre Lamp
- Installation: Wall mounted, or Freestanding with tripod
- Heating Area: 12m²
- IP65 Rated
- Function: Remote Control, 3 Power Setting, Timer Control

\$329



CF2000FMA

In-Line Duct Fan

This inline duct fans deliver strong performance in a compact, durable galvanised steel design, ideal for residential, commercial, and industrial use.

- Durable galvanised steel casing
- High-efficiency EC motors (energy saving)
- Quiet operation

From **\$309**



IDF-150EFMA	150mm	0.37kW	240V	\$309
IDF-200EFMA	200mm	0.89kW	240V	\$349
IDF-250EFMA	250mm	0.93kW	240V	\$369
IDF-310EFMA	310mm	0.98kW	240V	\$389

HVLS Industrial Ceiling Fan

Boost efficiency with this HVLS industrial ceiling fan.

- Energy-efficient HVLS fans
- Permanent magnet brushless motor
- 130°C heat-resistant NdFeB magnets
- Aerodynamic composite blades optimised by size
- 15 integrated safety features

From **\$2,999**



HVLS-25FMA	2.5m	0.15kW	240V	\$2,999
HVLS-49FMA	4.9m	0.72kW	240V	\$6,899
HVLS-73FMA	7.3m	1.25kW	240V	\$8,899



Professional Ratchet Crimping Kit

Professional ratchet crimping kit for precise, reliable, and consistent performance.

6 interchangeable heads for terminals and cable lugs.

\$115



C1019T4I

Industrial Steel Shelving & Drawer Package

4 level shelf, 364kg load capacity per shelf. 1955mm x 610mm x 1830mm. Silver corrosion-resistant finish.

Supplied with 2-drawer unit, 30kg load capacity per drawer.

\$385



K6034T4I

30T Hydraulic & Pneumatic Press Package

30 tonne heavy duty workshop press package with pneumatic foot control and mesh safety guard.

- Ideal for removing and installing bushes, ball joints, bearings, gears and pulleys

\$1,430



K6004T4I

Tri Cart Multi Machine Welding Trolley

Heavy duty welding trolley designed to store up to three machines, including an E-size bottle.

- Triple-tier design for a true multi-machine setup with adjustable shelving
- Large access holes for power leads, gas hoses and on/off switches

\$280



W2415T4I

Hydraulic Engine Crane & Engine Tilter

Heavy duty engine crane with a 1250kg working load limit, independently tested to AS1418.8-2008. Supplied with a 907kg rated engine tilter.

- Long extendable jib with four positions, lifting capacities from 310kg to 1250kg

\$506



K6045T4I

900kg Truck/Ute Swivel Crane & Self-Locking Swivel Hook

Versatile lifting jib ideal for the workshop or back of the ute. Features a taper roller bearing base for 360° swivel and a bow shackle lifting point. Supplied with a self-locking swivel hook.

- Heavy duty steel construction with robot-welded components
- Four lifting positions from 300kg to 900kg

\$484



K6046T4I



**RETRACTA R3 Air / Water Reel
25M x 1/2" - Blue Case**

Designed and made in Australia with a UV-stabilised, impact-resistant poly case, 180° galvanised steel swivel mounting bracket and durable ProGlide™ mouth.

- Advanced spring technology
- Reinforced PVC Hose
- Working pressure 250psi
- Inlet /outlet 3/8" BSP

\$440



AW425B-01

**RETRACTA R3 Air / Water Reel
25M x 3/8" - Blue Case**

3/8" (10mm) 25m air/water blue hybrid polymer hose. This product comes with UV stabilised & impact resistant poly case, 180° Galvanised steel swivel mounting bracket and ProGlide™ high wear resistant mouth.

- Designed & manufactured in Australia
- Advanced spring technology
- Reinforced PVC hose
- Working pressure 250psi
- Inlet 3/8" BSP (F)
- Hose outlet 1/4" BSP (M)

\$399



AW325B-01

P3 Power-Lube - 20kg Grease Kit

50:1 air-operated grease system for high-volume, high-pressure use. Portable for 20kg pails with a low air-consumption, non-lubricated air that reduces power use and eliminates oily mist.

- Adjustable collar system - Allows adjustment to different height grease pails
- Zinc components for underground mining compatibility
- Supplied with, pump, lid, follower, 4m high pressure grease hose and B2 Booster gun

\$1,632



P3-01CMAC

**AutoSwitch™ Dual Piston
Grease Gun 450g**

High-performance AutoSwitch™ grease gun with dual pistons, delivering up to 12,000 psi. Automatically switches from high flow to high pressure based on line back pressure for smooth, single-handed operation.

- Blue PIN indicator shows high-flow or high-pressure mode
- Bulk fill compatible for economical, contamination-free greasing
- Suitable for greases to NLGI no2

\$198



K75P-01MAC

**BATTERY OPERATED PUMP
BP20L UN Starter Kit**

Includes power head, 18V 2Ah lithium-ion battery, 1-hour fast charger, 1.5m hose with gun, bung adaptors and 20L stem. Suitable for engine, gear and hydraulic oils (up to SAE 140), ATF and coolant.

- Modular power head fits multiple pump stems
- Sealed wetted parts for zero contamination

\$564



BP20S-UNAMAC

**BATTERY OPERATED PUMP
BP20L UN Stem Kit**

Includes a 20L stem with 1.5m hose and gun, plus bung adaptors. Suitable for engine, gear and hydraulic oils (up to SAE 140), ATF and coolant.

- Adjustable suction tube length
- Drain-back valve & nozzle holder

\$199



BP20X-UNAMAC

**C1 Series Air / Water Hose
- 3/8 x 15m**

Designed to Retracta standards, the C1 Series is 35% smaller than the R3, ideal for compact spaces. Features a flexible hybrid polymer hose that lays flat and resists kinking under pressure.

- Australian designed
- 3 position reel swivel locking
- Working pressure 250psi
- Inlet 3/8" BSP
- Hose outlet 1/4" BSP (M)

\$296



C1AW315B-01CB

C1 Series Electrical 10A x 20m

Ideal for tidy, hassle-free cable management, this retractable reel ensures efficient storage and easy access, allowing quick and effortless cable extension and retraction.

- Australian Designed
- Thermal overload protection

\$509



C1EC10A20D-AU

**C1 Series Barrier Caution
Reel 25m**

Lightweight and compact, the Retracta Safety Barrier Reel is easy to transport and set up. Ideal for events, venues and worksites. Smooth retraction ensures tidy, space-saving storage.

- Australian designed
- 180° swivel bracket

\$322



C1BY5025Y



SCAN ME
FOR MORE

TIMKEN



Timken Timber Housed Units – SRB, TRB & Split CRB Solutions

Timken Timber Housed Units are engineered to perform in demanding sawmill and forestry environments. Designed to withstand heavy radial loads, shock loading, contamination and misalignment, these solutions are available in Spherical Roller Bearing (SRB), Tapered Roller Bearing (TRB), and Split Cylindrical Roller Bearing (CRB) configurations.

With rugged housing designs, advanced sealing systems and multiple shaft locking options, Timken housed units help maximise uptime, reduce maintenance frequency and improve reliability in harsh timber processing environments.

- Available in SRB, TRB, and Split CRB configurations
- Designed for heavy-duty timber applications
- Handles high radial loads and shock loading
- Options for combined radial and axial loads (TRB designs)
- Split-to-the-shaft designs available for easier installation and maintenance
- Accommodates shaft misalignment (SRB designs)
- Robust sealing systems to protect against sawdust, debris, and moisture
- Heavy-duty housings for demanding mill environments
- Designed for relubrication and extended operating life

Spherical Roller Bearing Solid Block Housed Units

Cast steel housings with high-performance spherical roller bearings deliver outstanding durability in extreme conditions, including severe shock loads and vibration.

Spherical Roller Bearings

Known across industries for reliability, durability and performance, Timken® spherical roller bearings can help lower operating costs by reducing maintenance intervals and extending bearing life. In side-by-side life testing under identical conditions, Timken bearings perform more consistently than our competitors' leading products.

- Longer lubricant and bearing life from cooler operating temperatures.
- Positive axial roller guidance and improved oil lubricant flow due to optimised internal geometries.

Tapered Roller Bearings

Not all bearings will face unforgiving conditions like huge payloads or high-contaminant environments. But when they do, Timken tapered roller bearings can handle the burden – with thousands of combinations in single-, double and four-row configurations to manage both radial and thrust loads.

Split Cylindrical Roller Bearings

Minimise drag. Reduce heat. And perform better, for longer, with less maintenance and downtime.





3M™ PROTECTA® P200 Riggers Full Body Harness

Provides reliable fall protection, comfort, and convenience with upgraded features and a modern design.

- Quick connect buckles
- Integrated suspension relief straps



\$170⁸⁵

7012872100

3M™ Versaflo™ TRM-307C TR-315A+ Starter Kit w/ M-307 Helmet

Versatile, easy-to-use powered air purifying respirator providing protection against particulate hazards.

- Slim, lightweight, well-balanced design for all-day comfort
- Two selectable airflow settings for personalised comfort



\$2,540

7012869262

3M™ GoggleGear™ 3000 GG3301-SGAF Protective Goggle, Clear AF/AS Lens

Full-size protective goggle with wraparound lens for improved field of vision, slotted nose bridge for comfort, and an optimised shroud to fit over most prescription eyewear.

- Full-size wraparound goggle with slotted nose bridge for comfort and wider vision
- Available with anti-fog/anti-scratch or 3M™ Scotchgard™ Anti-Fog Coating



\$33⁵⁰

7100325031

3M™ PELTOR™ WS™ ALERT™ XPV MRX21A1WS7 Headset - Green

Bluetooth® MultiPoint headset with noise-cancelling microphone and solar self-charging via photovoltaic power. Connects to a mobile app for easy setup and adjustment, provides hearing protection, and enables hands-free calls in noisy environments.

- Solar powered device with PowerFoyle™ film that charges from any light source, 27 dB Class 5



\$581

7100282733

3M™ Reusable Half Mask Respirator Quick Latch 6500QL Series

Reusable half mask respirator with quick-latch drop-down mechanism for easy on/off without removing a hard hat. Designed for comfort and durability with a textured silicone face seal; AS/NZS 1716 compliant and compatible with 3M™ bayonet-style filters.

- Quick latch drop-down allows easy on and off without removing a hard hat
- 3M™ Cool Flow™ Valve
- Helps release warm and moist exhaled breath from inside the respirator
- Allows for easy breathing



\$59⁵⁰

7100018994

3M™ Particulate Respirator 9923V, P2, with Nuisance Level Organic Vapour Relief - Valved

The 3M™ 9923V is a disposable specialty respirator with P2 rated filtration that offers protection from hazards such as coal dust, diesel particulate matter, other dusts, mists and fumes. The added carbon layer effectively reduces exposure to odours and unburned fuel vapours such as those from heavy machinery equipped with diesel engines.



\$70

7100017433

3M™ VHB™ Tape 4910F, Clear, 19mm x 11m

Ideal for transparent materials or where a clear bond is required, effectively replacing screws, rivets and studs to deliver a permanent hold with a clean appearance. This 40.0 mil tape offers short-term temperature resistance up to 149°C and long-term resistance up to 93°C.

- Clear material ideal for bonding transparent surfaces and seals instantly with no drying time.



\$45

7100123355

3M™ Cubitron™ 3 1169F Flap Disc

High-performance abrasive flap disc built for versatility and value. Featuring 3M Precision-Shaped Grain with re-engineered curved sides, it cuts faster and lasts longer than other shaped grains, delivering durability for everyday use.

- Ideal for use on carbon steel, stainless steel and other heat-sensitive alloys
- Delivers long-lasting premium performance and versatility
- 3M Precision-Shaped Grain, re-engineered with curved sides, cuts faster and lasts longer



\$990^{EA}

7100379743	40+ T29	125x22.23mm	\$9.90
7100379654	60+ T29	125x22.23mm	\$9.90
7100379232	80+ T29	125x22.23mm	\$9.90

UNIMIG

Viper Cut 30 MKII Plasma Cutter

A powerful 10A plasma cutter built to handle tough jobs.

- 12mm clean cut, 14mm max capacity
- CNC-ready for versatile applications
- Perforated mode for all materials

\$799



U14005K

Viper Multi 185 MIG/TIG/MMA Welder

Now with single pulse MIG, this multi-process welder is ideal for home repairs and hobby projects.

- Single pulse MIG & HF DC TIG
- Smart-Set synergic MIG modes
- 10A plug for standard outlets

\$1,149



U11260

Razor Multi 200 Pulse MIG/TIG/MMA Welder

The latest innovation in pulse MIG, this machine comes filled with revolutionary technology.

- Single and double pulse MIG programs
- 100+ synergic programs
- 5" touch screen LCD

\$2,699



U11003K

Razor Compact 250 MIG/TIG/MMA Welder

Get superior performance even in the toughest conditions with the professional machine in a compact case.

- Smart Set MIG for fast setup
- Spool & Push-Pull gun ready
- 4-roll geared wire drive
- Backed by a 5-year warranty

\$2,754



U11010K

Envy Cut 45 Air Plasma Cutter

A professional-grade plasma cutter that gives you the ultimate flexibility, perfect for the workshop or a worksite.

- Built-in air compressor for portability
- 20mm clean cut, 25mm max capacity
- CNC-ready for versatile applications

\$2,299



U11604

Envy Multi 230 AC/DC Welder

Filled with the latest revolutionary technologies, this professional-grade multi-process welder is capable of every kind of welding you need.

- Single & double pulse MIG
- High-frequency AC/DC TIG
- Smart-Set MIG & TIG modes

\$2,999



U11203

ENERPAC

XC2 Cordless Hydraulic Torque Wrench Pump

- 2 batteries and charger included
- Ideal for all kind of hydraulic torque wrench

\$14,330



XC2504BA

inox

LANOX MX4 Lanolin Lubricant 20L

A heavy-duty lanolin-based lubricant that forms a tough, water-resistant barrier to protect metal surfaces in harsh industrial environments.

- Prevents corrosion, electrolysis and metal-on-metal wear under pressure, keeping equipment running smoothly in demanding conditions.

\$299



MX4-20LINOX

MRO Maintenance Kits

- One set for many applications
- Organised and secured set

From **\$3,882**



SC05HTBE	5T	\$3,882
SC10HTBE	10T	\$4,774
SC20HTBEW	20T	\$8,158

INOX MX3 Original Formula Lubricant 20L

A multi-purpose anti-corrosion lubricant that penetrates, protects, and lubricates without drying out or washing away. It dissolves rust and oxidation, displaces moisture, and provides long-lasting protection in harsh industrial environments.

- Frees seized components and displaces moisture to prevent corrosion and maintain performance over time
- Safe for use on sensitive components - non-staining, non-toxic and electrically non-conductive

\$257



MX3-20LINOX



GATES MEGACRIMP™ COUPLINGS



Engineered for Leak Free Performance in Demanding Hydraulic Applications

When uptime matters, connection integrity is critical. Gates MegaCrimp™ Couplings with patented C Insert technology are engineered to deliver a consistent, concentric and leak resistant seal, even in high pressure and extreme operating environments.

Patented C Insert Technology

At the core of MegaCrimp performance is the patented C Insert.

During crimping, the C Insert remains round while only the outer shell conforms to the crimp die. This prevents the polygon effect common in traditional fittings, where distortion can compromise sealing integrity.



Bite the Wire Design for Maximum Retention

MegaCrimp couplings are engineered with a tooth profile that bites directly into the wire reinforcement of the hose.

This design provides strong mechanical retention without relying solely on compression of the hose tube and cover.



Gates "Bite-the-Wire" design

Full Torque Nut Technology

Installation errors and over torquing are leading causes of hydraulic fitting failure. Gates Full Torque Nut Technology is designed to reduce these risks.

A larger holding shoulder distributes stress more evenly across the nut, lowering peak stress concentration and reducing the chance of cracking.



Advanced Corrosion Protection

MegaCrimp couplings feature Gates TuffCoat™ plating for superior corrosion resistance.

Salt Spray Performance
ASTM B117 and ISO 9227 Testing

SAE J516 standard requirement 144 hours to red rust

Gates TuffCoat 500 hours to red rust

Gates TuffCoat Xtreme 840 hours to red rust

TuffCoat provides significantly greater protection than industry minimum standards.

TuffCoat Xtreme is ideal for mining, agriculture, fertilizer exposure and other highly corrosive environments.

Enhanced corrosion resistance translates to longer service life, reduced maintenance and lower total operating costs.



**FIND YOUR
LOCAL
BRANCH**

Key Advantages

- Even distribution of crimping forces
- Concentric and reliable sealing surface
- Accommodates hose wall thickness variations
- One coupling family compatible with multiple Gates wire braid hoses
- Qualified to SAE, EN and ISO performance standards
- The result is simplified inventory, reduced leak potential and consistent assembly performance.

Benefits

- No skiving required
- Clear full insertion indication
- Controlled insertion force
- Coupling stability during crimping
- This construction helps eliminate common installation related leaks and improves long term reliability.

Performance Advantages

- Increased resistance to over torque damage
- Reduced likelihood of cracked nuts
- Fewer installation leaks
- Improved long term durability
- Greater equipment uptime

Proven Performance

- Tested to one million impulse cycles
- Designed for high pressure hydraulic systems
- One piece coupling construction for reliability
- Compatible with industry leading Gates hydraulic hoses

SUPER SPECIALS

Cigweld Arcmaster Blax Welding Helmet

- Viewing Area: 96mm x 40mm
- Arc Sensors: 2
- Shade Range: 4-8/9-13 + Grind
- Switching Speed: 0.2ms



\$68

WHAMXC010CIG

3M Cubitron 3 1182C Fibre Disc Bucket

- 50x 125mm 1182C fibre disks 36 grit.
- Bonus: 1x 3M high performance back-up pad
- 5x 125mm Cubitron 3 cutting disks

**BULK BUY AND SAVE!
WHILE STOCKS LAST!**



\$195

7012888353

3M Silver Cut-Off Wheels 125mm Bucket - 100 Pack

- A premium performance wheel designed to be affordable for everyday use.
- 125mm x 1mm x 22.23mm
- Featuring 3M Precision Shaped Ceramic Grain technology



\$199

AC019441313

Alemlube EL Series Hot Water Hose Reel 15m x 10mm ID with Gun

EL Series hot water hose reel with heavy duty wash down gun.

- Supplied with a heavy duty pull trigger hose down nozzle-constant speed control-working pressure to 300psi-working temp up to 80c



\$386

HR30070CALM

Alemite 20V Lithium-Ion Cordless Grease Gun

The 670AN5 20V Lithium-ion cordless grease gun from Alemlube is an innovative grease gun with built in intelligence and a new and powerful 4.0Ah battery.

- Grease pressures of up to 10,000psi (690bar)
- Up to 35 cartridges per battery charge



\$1,334

670AN5ALM

Tridon File Set 2nd Cut 200mm 4pc

Contains 1 round, half round, flat and square file.

- Cut type: Second cut
- Length: 200mm



\$51

TFR2002TDO

3M™ Temflex™ 160 Vinyl Electrical Tape

A multi-purpose, general use grade, electrical insulating tape composed of PVC film backing coated on one side with a non-corrosive, pressure-sensitive adhesive.

- Temperature range: 0°C - 80°C
- Thickness: 0.15mm
- Marking of safety areas and equipment and phase coding.
- Primary insulation on applications up to 600V

From \$120



7100374494	Black	\$1.20
7100374339	Red	\$1.20
7100374454	Blue	\$1.20
7100374484	White	\$1.20
7100374565	Yellow-Green	\$1.20
7100374341	Rainbow Pack	\$12

WHILE STOCKS LAST

CRC Fogger Sanitiser 210ml Aerosol

An industrial strength sanitiser fogger that effectively kills germs in all the hard-to-reach spots conventional cleaning techniques miss.



\$6

1752197CRC

Tough-As Motion Australia Work Mat

2.0 x 1.0m work mat.

- Chemical, stain and tear and cut resistant
- Durable, premium grade PVC outer
- Closed cell, soft high density foam inner
- Waterproof
- 5year UV warranty

NEW COLOUR AVAILABLE!

\$198 EA



WM-L-REDMOTION Red
WM-L-YELMOTION Yellow

Typhoon 45pc 1/4" & 3/8" Drive Socket Set Metric/AF

Metric Sizes:

- 1/4" Drive: 4, 5, 6, 7, 8, 9, 10, 11, 12mm
- 3/8" Drive: 8, 9, 10, 11, 12, 13, 14, 15, 16, 17, 18mm
- 3/8" Ratchet
- Extensions 50 – 150
- Spinner Handle



\$74

70010TYP

Typhoon 7pc Jumbo Spanner Set 22–41mm

- Sizes: 22, 24, 27, 30, 32, 36 & 41mm



\$124

70024TYP

Typhoon 5pc Plier Set

- 200mm Combination Pliers
- 175mm Diagonal Pliers
- 200mm Long Nose Pliers
- 250mm Locking Pliers
- 250mm Multigrips
- Chrome Nickel
- Insulated Handles



\$61

70750TYP

Typhoon Chisel Set

- Pin Punch Sizes: 1.5, 3, 4, 5, 6, 8mm
- Cold Chisel Sizes: 10, 12, 16mm
- Centre Punch Sizes: 6 & 8mm
- Straight Punch Size: 2mm



\$35

70500TYP

Toledo Bolt Cutter

- Suitable for general purpose use with soft and medium metal applications only
- Slim head centre cut jaw design enables close surface cutting



From **\$99**

316004TDO 750mm/30in **\$99**
316005TDO 900mm/36in **\$130**

Toledo Silicone Remover 210mm

- Professional tool to easily remove and clean cured silicone
- Suitable for all types of surfaces including glass windows, tiles, ceramic sinks etc



\$11

301557TDO

SUPER SPECIALS

Alpha Drill Set Gold Series Metric

- Genuine Alpha Gold Series drill bits
- 135 degrees Split point cuts faster and reduces wandering
- Fully ground M2 HSS increases drill life
- Titanium nitride coating reduces heat and increases lubricity for extended life

From **\$395**

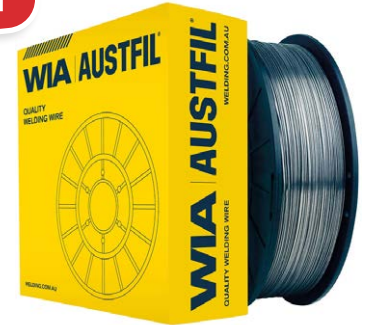


SM85ALP 1.0-10.0mm 85pc **\$395**
SM100ALP 1.0-13.0mm 100pc **\$719**

WIA Self-Shielded Flux-Cored Wire 1.2mm 5kg

A self-shielded flux cored MIG wire for single and multi pass applications in all positions.

\$61



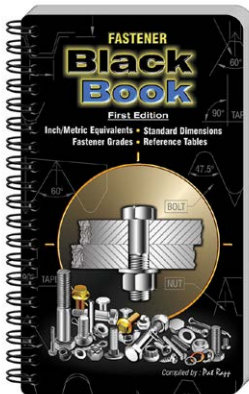
AUST11125KGWIA

Sutton Fastener Black Book

The ultimate fastener reference book.

- Inch/Metric Equivalents
- Standard Dimensions
- Fastener Grades
- Reference Tables

\$63



057134SUT

Sutton Black Max Jobber Drill Set 25pc 1-13mm

\$115



150B00BM3SUT

T4I Auto Parts Washer

A compact, reliable cleaning station designed for environments where space is limited but performance can't be compromised.

\$85



A370T4I

Alpha Drill Set Tuffbox Cobalt Imp 29pc

Cobalt Imperial Drill Set.

\$459



SI29COALP

Sykes 1400 Series Twin/Triple Puller 6in

- Spread: 75 - 150mm
- Reach: 150mm

\$304



143605SYK

Sutton Holesaw Set Bi-Metal #9 Elec

Used for machine or hand drilling and are suited to cut steels, stainless steel, cast iron, non-ferrous materials, plastic and wood.

\$216



H105S9SUT



NEW AGRICULTURE & CONSTRUCTION KITS

Agriculture Minor & Major Kits

- Complete kit for on-site grease line repairs
- Includes essential fittings and hose components
- Durable toolbox with convenient tray insert



NEW

Construction Minor & Major Kits

Heavy-duty toolbox with complete on-site grease line repair kit.

- All-in-one grease line repair solution
- Quality fittings and hose components included
- Strong toolbox with removable tray for easy organisation

NEW



Enquire today for more information

SCAN ME!

Samoa 20kg Grease Kit

- 20kg drum grease kit designed for all-day, everyday greasing
- Includes grease pump, drum cover, follower plate, carry handle, 4m hose, Z swivel, control valve and 3-jaw coupler



From **\$1,565**

424170 \$1565
424150 with Trolley \$1761

5:1 Rato Air Operated Stub Pump

- Alemite air operated bulk tank transfer drum pump
- USA made standard duty 5:1 ratio RAM air powered drum motor
- Delivers light, medium & heavy oils over long distances
- Delivers up to 26L/min
- Material inlet 1-1/2" NPTF(f)
- Material outlet 1/2" NPTF(f)



\$3,223

9968ALM

Lockable Diesel Tank Pump Kit

- Heavy duty polyethylene diesel tank made in Australia
- Lockable & secure
- 15 year warranty on tank & 2 year warranty on pump

From **\$1,820**



L20040PAALM 200L **\$1,820**
L45040PAALM 450L **\$2,365**

Pulsarlube M Series - Main Unit Only

Main unit only (Grease Pouch, Battery & Dust Cover Not Included).

- Vertical feed pump with microprocessor and up to 8 lube points



From **\$539**

M125/MAIN-NPLS 125cc **\$539**
M500/MAINPLS 500cc **\$607**

Pulsarlube E Series

Filled with PL1 grease.

- Electro-chemical single point lubricator; cost-effective and easy to use
- Generates inert Nitrogen (N) gas
- More temperature-stable than hydrogen gas types
- Adjustable dispensing period with instant on/off
- Max 70 psi (5 bar) and 55°C operating conditions



From **\$66**

E120/PL1PLS 120cc **\$66**
E240/PL1PLS 240cc **\$96**

Agricultural 120 Piece Grease Nipple Assortment Kit

- Includes the most popular agricultural industry type grease nipples



\$138

L4674ALM

Imperial 101 Piece Grease Nipple Assortment Kit

- Includes the most popular imperial standard industry type grease nipples
- Convenient compartmentalised refillable carry kit



\$133

L4675ALM



iMOTION

Delivering a world-class customer-first approach providing excellence and expertise in industrial products, solutions and services.

iMOTION
FLUID POWER SOLUTIONS

Specialists in Fluid Power Solutions tailored to keep your equipment moving.

iMOTION
ENGINEERING & SERVICES

Specialist design and engineering, manufacturing, repair and maintenance services.

Anytime. Anywhere.
Always Here.™



Find a location near you!

Scan the QR Code to find out more or visit [Motion.com.au](https://www.motion.com.au)