

HYDROVAC & WASTE SERVICES

Industry Guide



WHO WE ARE.

Motion delivers a world-class customer-first approach to everything we do. This has firmly established our business as the leader in the market, providing excellence and expertise in industrial products, solutions and services.

For more than 100 years we have been a feature in the Australian industrial landscape giving customers unmatched products and service through an integrated network of branches, workshops and service centres.

We have an ongoing commitment to invest in our people, facilities, IT and systems to ensure we can continue to offer a broad ranging and premium level of engineering design, servicing and turnkey projects to our customers across Australia.

We are committed and proud to keep our customers in motion, every day of the year.

“WE KEEP THE WORLD MOVING”



CONTENTS

WASTE & INDUSTRIAL HOSE

4

OPTIMA® Kanamax® AR180HD Black Suction Hose	4
OPTIMA® Kanamax® HR180 High Temp Abrasive Resistant Suction & Delivery Hoses	4
OPTIMA® PVC Tigertail Black / Yellow Hose	5
OPTIMA® SR Clear / Black / Orange PVC Suction & Delivery Hose	5
OPTIMA® SR Bumble Bee PVC / PU Suction Hose	6
OPTIMA® Blue PVC NBR Oil Suction Hose	6
Exitflex® EF623 Corrugated Bulk Material Handling Hose	7
IVG Bulk Material Handling Corrugated Vacpower	7
IVG Bulk Material Handling Volga	8
OPTIMA® Blue Black PVC / NBR Oil Suction Hose	8
ExitFlex® EF301 Sewer Jetting Hose Orange (2500 PSI)	9
ExitFlex® EF302 Sewer Jetting Hose - Blue (3000PSI)	9
ExitFlex® EF303 Water Jetting / Lateral Sewer Cleaning Hose Green (4000 PSI)	10
ExitFlex® EF303Y Water Jetting / Lateral Sewer Cleaning Hose - Yellow (5000 PSI)	11
ExitFlex® Pressure Washer Hose	11
Exitflex® 6K Pressure Washer 420 Bar-TuffWash	12

FITTINGS & HARDWARE

13

Spray Guns & Nozzles	13-14
Pressure Washers	15
Travis Coupling & Brass Ball Valve	17
Camlocks	18-19
Bauer Couplings & Valves	20-21



OPTIMA® KANAMAX AR180HD BLACK SUCTION HOSE

Heavy duty abrasion resistance suction hose for vacuum trucks or handling abrasives such as crushed rock, sand, pea gravel, cement powder, dry fertiliser, iron ore and grains.



Part Number	Hose size (mm)		Working Pressure @20°C		Vaccum Rating @20°C	Weight	Bend Radius	Length
	ID	OD	psi		in/hg	kg/m	mm	metres
10-846-102-***	102	121.5	30		29.8	3.10	130	30
10-846-127-***	127	150.2	30		29.8	4.04	150	30
10-846-152-***	152	175.5	30		28	5.27	250	30

REINFORCEMENT: Rigid PVC helix anti-shock
INNER TUBE: Black SBR rubber conductive
COVER: Black corrugated SBR
TEMPERATURE: -40°C to +60°C

ADVANTAGES:

- Heavier duty than standard Kanamax.
- Extremely abrasion resistant.
- Static dissipating with no grounding wire.
- Bi-directional.
- 3:1 safety factor.

OPTIMA® KANAMAX® HR180 HIGH TEMP ABRASIVE RESISTANT SUCTION & DELIVERY HOSE

Designed for the transfer of abrasive material such as sand, crushed rocks, fly ash and other abrasive materials making it ideally suited for vacuum excavation industry.



Part Number	ID	Nom OD	Working Pressure @ 20°C		Weight	Vaccum Rating @ 20°C	Bend Radius	Length	Cut Policy
	mm	mm	psi	bar	kg/m	in/hg	mm	metres	kg/m
10-867-076-***	76	92.9	35	2.4	2.14	29.80	100	30	0
10-867-102-***	102	119.4	30	2.1	2.63	29.80	140	30	0
10-867-152-***	152	175.3	30	2.1	5.13	28.00	260	30	0
10-867-203-***	203	231.4	30	2.1	8.96	27.00	380	15	0

REINFORCEMENT: Rigid anti-shock polyethylene and steel wire helix
INNER TUBE: Black smooth EPDM
COVER: Black corrugated EPDM
SAFETY FACTOR: 3:1
TEMPERATURE: -40°C to +60°C

ADVANTAGES:

- Higher temperature than standard AR180 Kanamax.
- Extremely abrasion resistant.
- Antistatic tube and metal wire helix can be grounded.
- Bi-directional.
- Light weight and flexible.
- Raised helix provides for easy drag.

OPTIMA® PVC TIGERTAIL BLACK/YELLOW HOSE

The blended formulation gives it a high flexibility at extremely low temperatures, the raised helix allows the hose to slide easily over rough surfaces making it ideally suited for the transfer of liquid waste from grease traps and other environmental collection facilities.



Part Number	ID	Nom OD	Working Pressure @20°C		Weight	Vaccum Rating @20	Bend Radius	Length
	mm	mm	psi	bar	kg/m	in/hg	mm	metres
02-430-051-020	51.0	61.0	45	3.1	0.88	24	220	20
02-430-063-020	63.0	76.0	45	3.1	1.27	24	270	20
02-430-076-020	76.0	90.0	45	3.1	1.62	24	350	20
02-430-102-020	102.0	118.6	45	3.1	2.43	24	450	20

REINFORCEMENT: Yellow rigid PVC helix

INNER TUBE: Black smooth PVC/NBR - abrasive resistant

COVER: Black corrugated conductive

SBR: Abrasive resistant

SAFETY FACTOR: 3:1

TEMPERATURE: -5°C TO +60°C

ADVANTAGES:

- Superior flexibility.
- Smooth abrasive resistant tube with chemical resistant characteristics.
- UV stabilised.

OPTIMA® SR CLEAR / BLACK / ORANGE PVC SUCTION & DELIVERY HOSE

For both vacuum and pressure applications, with increased flexibility in colder environments and corrugated external helix giving the hose a lower drag co-efficiency makes it ideally suited for use in the hire, construction and vacuum excavation industries, also suitable for use in fish transfer and aquaculture applications.

Note: Not recommended for the transfer of Barramundi in fish transfer applications.



Part Number	ID	Nom OD	Working Pressure @ 20°C		Weight	Vaccum Rating @ 20°C	Bend Radius	Helix	Lengths	Cut Policy
	mm	mm	psi	bar	kg/m	in/Hg	mm	colour	metres	metres
02-863-051-***	51	66	100	6.9	1.026	29	100	Black	20	0
02-863-076-***	76	94	100	6.9	1.68	28	150	Black	20	0
02-863-102-***	102	121.4	80	5.5	2.589	28	180	Black	20	0
02-863-152-***	152	182.1	70	4.8	5.779	28	250	Black	20	0
02-863-203-***	203	237.2	60	4.1	8.259	28	400	Black	40/50	0
02-863-254-***	254	295.4	40	2.8	13.244	28	640	Black	12	0
02-863-305-***	305	350.5	28	1.9	15.328	25	1140	Black	12	0
02-864-203-***	203	239	60	4.1	9	28	400	Black	25	0
02-864-254-***	254	296.5	40	2.8	14.1	28	630	Black	12	0
02-865-102-***	102	121.4	80	5.5	2.589	28	180	Orange	30	0

REINFORCEMENT: High tensile textile cord with rigid anti-shock

black or orange PVC helix

INNER TUBE: Clear smooth PVC

COVER: Clear corrugated PVC

SAFETY FACTOR: 3:1

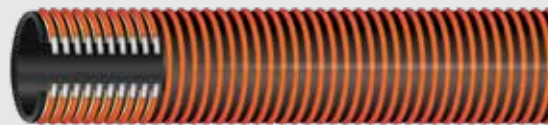
TEMPERATURE: -25°C to +60°C

ADVANTAGES:

- Fabric reinforcement for higher working pressures.
- Raised helix provides for easy drag.
- Light weight with cold weather flexibility.
- Clear sidewall enabling for visible checks of material flow.
- Smooth bore to minimise flow resistance.
- Large bore sizes available.

OPTIMA® BUMBLE BEE PVC / PU SUCTION HOSE

An abrasive material transfer hose ideal for the movement of pellets, chips, rocks and sand. The raised helix allows for ease in dragging of the hose which is useful in applications such as waste removal as well as tank and roof cleaning.



Part Number	ID	Nom OD	Working Pressure @ 20°C		Weight	Vacuum Rating @ 20°C	Bend Radius	Helix	Lengths	Cut Policy
	mm	mm	psi	bar	kg/m	in/Hg	mm	colour	metres	metres
02-850-051-***	51	60.0	60	4.1	0.730	28.93	100	Orange	20	5
02-850-063-***	63	74.4	48	3.3	1.010	28.93	125	Orange	20	5
02-850-076-***	76	89.9	48	3.3	1.430	28.93	150	Orange	20	5
02-850-102-***	102	118.6	32	2.2	2.310	28.93	250	Orange	20	5
02-850-127-***	127	144.5	28	1.9	3.760	27.95	280	Orange	20	5
02-850-152-***	152	172.5	25	1.7	4.670	27.95	330	Orange	20	5
02-850-203-***	203	231.1	25	1.7	8.360	27.95	410	Orange	20	5

REINFORCEMENT: Rigid anti-shock PVC

INNER TUBE: Clear smooth PU

COVER: Black corrugated PVC

SAFETY FACTOR: 3:1

TEMPERATURE: -10°C to +65°C

ADVANTAGES:

- Excellent resistance to ageing, atmospheric conditions and ozone.
- Outwears PVC hose 5-7 times.
- Anti-static wire.
- Excellent abrasion resistant.
- Highly flexible even in cold weather.
- Raised helix provides for easy drag.

OPTIMA® BLUE PVC NBR OIL SUCTION HOSE

The specially blended formulation provides excellent flexibility even at low temperatures making it ideally suited for liquid waste transfer and septic cleaning applications.



Part Number	ID	Nom OD	Working Pressure @ 20°C		Weight	Vacuum Rating @ 20°C	Bend Radius	Lengths
	mm	mm	psi	bar	kg/m	in/Hg	mm	metres
02-400-025-020	25	31.5	87	6.0	0.39	29	76	20
02-400-032-020	32	39.1	80	5.5	0.51	29	102	20
02-400-038-020	38	46.2	72	5.0	0.65	29	152	20
02-400-051-020	51	60.7	72	5.0	1.10	29	203	20
02-400-063-020	63	74.4	72	5.0	1.50	29	254	20
02-400-076-020	76	87.1	60	4.1	1.80	29	305	20
02-400-102-020	102	115.1	56	3.9	3.01	29	380	20

REINFORCEMENT: Blue rigid PVC helix

INNER TUBE: Blue smooth PVC/NBR - abrasive resistant

COVER: Blue smooth PVC/NBR - abrasive resistant

SAFETY FACTOR: 3:1

TEMPERATURE: -20°C to +60°C

ADVANTAGES:

- Excellent flexibility even in colder environments.
- Resistant to hydrocarbon based materials - diesel fuels, oil, grease and lubricants.
- UV stabilised.
- Nitrile blend ensures greater and broader chemical resistance.

EXITFLEX® EF623 CORRUGATED BULK MATERIAL HANDLING HOSE

Designed for transfer of dry abrasive materials including sand recovery and drilling equipment.



Part Number	ID	Nom OD	Working Pressure @ 20°C		Weight	Bend Radius	Lengths	Cut Policy
	mm	mm	psi	bar	kg/m	mm	metres	metres
10-870-102-***	102	116.0	75	5.2	3.20	490	20	5
10-870-127-***	127	143.0	75	5.2	4.80	560	20	5
10-870-152-***	152	168.0	75	5.2	5.90	640	20	5
10-870-203-***	203	221.0	75	5.2	9.10	800	12	5

REINFORCEMENT: High tensile textile braid with wire helix

INNER TUBE: Black Smooth NR

COVER: Black Corrugated NR/SBR Blend

SAFETY FACTOR: 3:1

TEMPERATURE: -20°C TO +80°C

ADVANTAGES:

- Lightweight highly flexible alternative to the heavier material handling hoses.
- Excellent resistance to ageing, atmospheric conditions and ozone.
- Excellent abrasive resistance.

IVG BULK MATERIAL HANDLING CORRUGATED VACPOWER

Designed for suction applications on a boom arm in harsh conditions. Can be used to move materials such as waste, sand, large rocks and debris.



Part Number	ID	Nom OD	Working Pressure @ 20°C		Weight	Vacuum Rating @ 20°C	Bend Radius	Lengths	Cut Policy
	mm	mm	psi	bar	kg/m	in/HG	mm	metres	metres
10-871-152-***	152	167.8	45	3	4.49	26.58	460	20	10
10-871-203-***	203	223.1	45	3	9.98	26.58	610	20	10

REINFORCEMENT: High strength synthetic cord plus embedded steel helix wire

INNER TUBE: Black, smooth anti-static synthetic rubber

COVER: Black corrugated synthetic rubber compound

SAFETY FACTOR: 3:1

TEMPERATURE: -30°C to +70°C

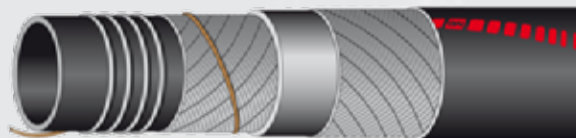
STANDARDS: ISO 8031

ADVANTAGES:

- Weathering and abrasion resistant.
- Anti-static.

BULK MATERIAL HANDLING VOLGA

Is a hardwall hose designed to be used in the suction and delivery of dry cement, sand, gravel, etc. Commonly used on suction boom arms on vacuum excavation truck.



Part Number	ID	Nom OD	Working Pressure @ 20°C		Weight	Vacuum Rating @ 20°C	Bend Radius	Lengths	Cut Policy
	mm	mm	psi	bar	kg/m	in/Hg	mm	metres	metres
10-875-051-***	50.8	65.0	150	10	2.04	26.58	230	20	5
10-875-076-***	76.2	92.0	150	10	9.98	26.58	360	20	5
10-875-102-***	101.6	120.0	150	10	4.49	26.58	450	20	5
10-875-127-***	127.0	147.0	150	10	9.98	26.58	675	20	5
10-875-152-***	152.4	177.0	150	10	4.49	23.62	900	20	5

REINFORCEMENT: High strength synthetic cord, steel helix wire and antistatic copper wire

INNER TUBE: Black, smooth, antistatic SBR/NR blend

COVER: Black, smooth EPDM rubber

SAFETY FACTOR: 3:1

TEMPERATURE: -30°C to +70°C

STANDARDS: ISO 4649

ADVANTAGES:

- Weathering and ozone resistant.
- Highly abrasive resistant.
- Anti-static copper wire.

OPTIMA® BLUE BLACK PVC / NBR OIL SUCTION HOSE

The specially blended formulation provides excellent flexibility even at low temperatures making it ideally suited for liquid waste transfer and septic cleaning applications, the exposed helix allows the hose to slide easily over rough surfaces.



Part Number	ID	Nom OD	Working Pressure @ 20°C		Weight	Vacuum Rating @ 20°C	Bend Radius	Lengths
	mm	mm	psi	bar	kg/m	in/Hg	mm	metres
02-401-038-020	38	48.0	50	3.4	0.65	29	102	20
02-401-051-020	51	62.0	50	3.4	1.10	29	152	20
02-401-063-020	63	76.0	50	3.4	1.51	29	165	20
02-401-076-020	76	91.0	45	3.1	1.80	29	203	20
02-401-102-020	102	115.0	38	2.6	2.90	29	305	20

REINFORCEMENT: Blue rigid PVC helix

INNER TUBE: Black smooth PVC/NBR - abrasive resistant

COVER: Black corrugated PVC/NBR - abrasive resistant

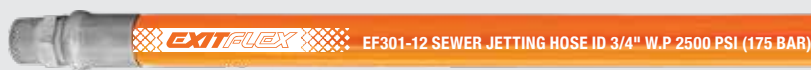
SAFETY FACTOR: 3:1

TEMPERATURE: -40°C to +60°C

ADVANTAGES:

- Heavy duty.
- Resistant to hydrocarbon based materials - diesel fuels, oil, grease and lubricants.
- Excellent flexibility even in colder environments.
- Nitrile blend ensures greater and broader chemical resistance.

**EXITFLEX® EF301
SEWER JETTING HOSE
ORANGE (2500 PSI)**



Part Number	Hose ID	Working Pressure	Min Bend	Fitting A	Fitting B	Assembly length
	Inches	PSI	mm			metres
89-181-SCOR12-NM12-NF12-122MTR	3/4"	2500	125	NPM-12	NSFX-12	122
89-181-SCOR12-NM12-NF12-183MTR	3/4"	2500	125	NPM-12	NSFX-12	183
89-181-SCOR16-NM16-NF16-183MTR	1"	2500	160	NPM-16	NSFX-16	183
89-181-SCOR16-BM16-BF16-183MTR	1"	2500	160	BTM-16	BPFX-16	183
89-181-SCOR20-NM20-NF20-183MTR	1-1/4"	2500	250	NPM-21	NSFX-21	183

APPLICATION: High pressure and high volume sewer cleaning vehicles and cleaning equipment.

REINFORCEMENT: High tensile textile cord.

INNER TUBE: White smooth thermoplastic elastomer.

COVER: Orange smooth polyurethane.

SAFETY FACTOR: 2.5 : 1 - BURST 6250 PSI

BRANDING: Exitflex Swiss Technology EF301-12 Sewer Jetting Hose ID 3/4" W.P 2500 PSI (175 BAR).

TEMPERATURE: -40°C TO +60°C

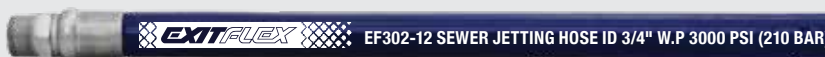
ADVANTAGES:

- Abrasive and cut resistant cover designed for long life.
- Bonded construction to resist kinking.
- Cover material specially compounded to resist mircobiological degradation.
- Light weight.

FITTING:

- FITTING NPM = NPTF MALE
- FITTING NSFX = NPSM FEMALE SWIVEL

**EXITFLEX® EF302
SEWER JETTING HOSE -
BLUE (3000PSI)**



Part Number	Hose ID	Working Pressure	Min Bend	Fitting A	Fitting B	Assembly Length
	inches	psi	mm			metres
89-181-SCBL12-BM12-BF12-122MTR	3/4"	3000	125	BTM-12	BPFC-12	122
89-181-SCBL12-NM12-NF12-122MTR	3/4"	3000	125	NPM-12	NSFX-12	122
89-181-SCBL12-BM12-BF12-183MTR	3/4"	3000	125	BTM-12	BPFC-12	183
89-181-SCBL12-NM12-NF12-183MTR	3/4"	3000	125	NPM-12	NSFX-12	183
89-181-SCBL16-BM16-BF16-183MTR	1"	3000	160	BTM-12	BPFX-16	183
89-181-SCBL16-NM16-NF16-183MTR	1"	3000	160	NPM-16	NSFX-16	183
89-181-SCBL16-NM16-NF16-220MTR	1"	3000	160	NPM-16	NSFX-16	220
89-181-SCBL20-BM20-BF20-183MTR	1-1/4"	3000	250	BTM-20	BPFX-20	183
89-181-SCBL20-NM20-NF20-183MTR	1-1/4"	3000	250	NPM-20	NSFX-20	183

REINFORCEMENT: High pressure and high volume sewer cleaning vehicles and cleaning equipment

REINFORCEMENT: High tensile textile cord

INNER TUBE: White smooth thermoplastic elastomer

COVER: Blue smooth polyurethane

SAFETY FACTOR: 2.5 : 1 - BURST 7500 PSI

BRANDING: Exitflex Swiss Technology EF301-12 Sewer Jetting Hose ID 3/4" W.P 2500 PSI (175 BAR)

TEMPERATURE: -40°C TO +60°C

ADVANTAGES:

- Thicker abrasion and cut resistant cover designed for tougher environments extended life.
- Bonded construction to resist kinking.
- Cover material specially compounded to resist mircobiological degradation.
- Light weight.

FITTING:

- FITTING BTM = BSPT MALE
- FITTING BPFX = BSPP FEMALE SWIVEL
- FITTING NPM = NPTF MALE
- FITTING NSFX = NPSM FEMALE SWIVEL

EXITFLEX SEWER JETTING HOSE

Exitflex sewer cleaning hoses for standard sewer cleaning vehicles and cleaning equipment are a must when the application calls for extreme durability while maintaining flexibility.

For the applications that call for a higher working pressure the ExitFlex sewer hose has been engineered and manufactured with a thermoplastic elastomer tube, 1 or 2 braids of high tensile synthetic fibre reinforcement and a polyurethane cover that extends the life of the hose by greatly improving cut and abrasion resistance.

Each hose is designed with a unique cover colour in compliance with industry standards allowing the operator to quickly identify the working pressures of each hose type making Exitflex hoses the optimal choice for the sewer cleaning and sewer jetting industry.

EXITFLEX® EF303 WATER JETTING / LATERAL SEWER CLEANING HOSE - GREEN (4000 PSI)



Part Number	Hose ID	Working Pressure	Min Bend	Fitting A	Fitting B	Assembly length
	Inches	PSI	mm			metres
89-181-SCGR08-BM08-BF08-120MTR	1/2"	4000	75	BTM-08	BPFX-08	120
89-181-SCGR08-NM08-NM08-120MTR	1/2"	4000	75	NPM-08	NPM-08	120
89-181-SCGR08-NM08-NM08-183MTR	1/2"	4000	75	NPM-08	NPM-08	183
89-181-SCGR08-NM08-NM08-220MTR	1/2"	4000	75	NPM-08	NPM-08	220

APPLICATION: High pressure and high volume sewer cleaning vehicles and cleaning equipment.

REINFORCEMENT: High tensile textile cord.

INNER TUBE: White smooth thermoplastic elastomer.

COVER: Green smooth polyurethane.

SAFETY FACTOR: 2.5 : 1 - BURST 10000 PSI

BRANDING: Exitflex Swiss Technology EF301-12 Sewer Jetting Hose ID 3/4" W.P 2500 PSI (175 BAR).

TEMPERATURE: -40°C TO +60°C

ADVANTAGES:

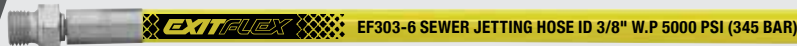
- Particularly suited for use with compact vehicles and lateral sewer line cleaning equipment
- High pressure capabilities combined with extreme flexibility and light weight
- Abrasion and cut resistance cover
- Bonded construction to resist kinking cially compounded to resist microbiological degradation

FITTING:

- FITTING BTM = BSPT MALE
- FITTING BPFX = BSPP FEMALE SWIVEL
- FITTING NPM = NPTF MALE
- FITTING NSFV = NPSM FEMALE SWIVEL



**EXITFLEX® EF303Y
WATER JETTING / LATERAL SEWER
CLEANING HOSE - YELLOW
(5000 PSI)**



Part Number	Hose ID	Working Pressure	Min Bend	Fitting A	Fitting B	Assembly length
	Inches	PSI	mm			metres
89-181-SCYL03-BM04-BM04-60MTR	3/16"	5000	40	BTM-04	BTM-04	60
89-181-SCYL04-BM04-BF04-60MTR	1/4"	5000	40	BTM-04	BTM-04	60
89-181-SCYL04-BM04-BM04-60MTR	1/4"	5000	40	BTM-04	BTM-04	60
89-181-SCYL06-BM06-BM06-60MTR	3/8"	5000	40	BTM-06	BTM-06	60

APPLICATION: High pressure and high volume sewer cleaning vehicles and cleaning equipment.

REINFORCEMENT: High tensile textile cord.

INNER TUBE: White smooth thermoplastic elastomer.

COVER: Yellow smooth polyurethane.

SAFETY FACTOR: 2.5 : 1 - BURST 6250 PSI

BRANDING: Exitflex Swiss Technology EF301-12 Sewer Jetting Hose ID 3/4" W.P 2500 PSI (175 BAR).

TEMPERATURE: -40°C TO +60°C

ADVANTAGES:

- Particularly suited for use with compact vehicles and lateral swere line cleaning equipment
- High pressure capabilities combined with extreme flexibility and light weight
- Abrasion and cut resistance cover, material specially compounded to resist microbiological degradation

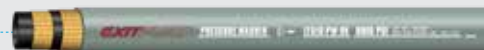
FITTING:

- FITTING BTM = NPTF MALE
- FITTING BPFX = BSPP FEMALE SWIVEL
- FITTING NPM = NPTF MALE

**EXITFLEX® PRESSURE
WASHER HOSE**

A high pressure, high temperature pressure washer hose suitable for cleaning applications to 420 bar, can be used for heavy duty cold and hot water pressure cleaning. Extremely flexible, light weight and easy to handle, also resistant to most detergent fluids.

EXITFLEX® PW6K



Part Number	ID	Nom. OD	Working Pressure		Weight	Burst Pressure		Bend Radius
	mm	mm	psi	bar	kg/m	psi	bar	mm
80-PW6K-06	9.5	17.4	6000	420	0.40	18000	1260	90

REINFORCEMENT: High tensile double steel braid

INNER TUBE: Black smooth synthetic rubber

COVER: Grey smooth synthetic rubber

SAFETY FACTOR: 3 : 1

TEMPERATURE: -40°C to + 155°C

ADVANTAGES:

- Bonded construction to resist kinking.
- Excellent resistance to ageing, atmospheric conditions and ozone.
- Pin pricked outer cover.
- Light weight and easy to handle.
- Abrasion resistant.
- Excellent flexibility.
- Non marking cover.

**EXITFLEX® 6K
PRESSURE WASHER 420
BAR-TUFF WASH**

EXITFLEX® PW6BK



Part Number	Hose size / mm		Working pressure / psi		Min bend	Weight per	Hose
	ID	OD	max	min burst	radius / mm	metre / kg	coupling
80-PWTW6BK-04	1/4"	14	6000	18000	75	0.37	EB / TP
80-PWTW6BK-06	3/8"	17.8	6000	18000	90	0.38	EB / TP

APPLICATION: High pressure power cleaners, hot water applications, extremely flexible and light weight

REINFORCEMENT: Two braid of high-tensile steel wire.

COVER: Black Hard X , Synthetic rubber resistant to extreme abrasion, weather, oil & ozone

INNER TUBE: Black synthetic rubber

TEMPERATURE: --40°C to 155°C

ADVANTAGES:

- Abrasive and cut resistant cover designed for long life.
- Bonded construction to resist kinking.
- Cover material specially compounded to resist microbiological degradation.
- Light weight.





HIGH PRESSURE SPRAY GUNS - MECLINE



Code	Inlet		Outlet		Working Pressure		Flow Rate	Temp Rating	
	Size	Type	Size	Type	psi	bar	l/min	°C	°F
28-208-310SW	3/8"	Swivel	1/4"	Fixed	4500	310	40	150	300
28-208-311	3/8"	Fixed	1/4"	Fixed	4500	310	40	150	300
28-208-955	3/8"	Fixed	1/4"	Fixed	5220	360	40	160	320
28-208-955SW	3/8"	Fixed	1/4"	Fixed	5220	360	40	160	320

HIGH PRESSURE CERAMIC ROTATING NOZZLES - ROTOJET 255

MADE IN ITALY.



Code	Inlet		Outlet	Working Pressure		Temp Rating	
	Size	Type	Oroifice	psi	bar	°C	°F
28-250-035	1/4"	BSPF	0.35	3700	255	90	190
28-250-040	1/4"	BSPF	0.40	3700	255	90	190
28-250-045	1/4"	BSPF	0.45	3700	255	90	190
28-250-050	1/4"	BSPF	0.50	3700	255	90	190
28-250-055	1/4"	BSPF	0.55	3700	255	90	190
28-250-060	1/4"	BSPF	0.60	3700	255	90	190
28-250-065	1/4"	BSPF	0.65	3700	255	90	190
28-250-090	1/4"	BSPF	0.90	3700	255	90	190

Code	Flow Rate Chart in Ltrs Per Min (LPM)				
	@ 1500 psi	@ 2000 psi	@ 2500 psi	@ 3000 psi	@ 3200 psi
28-250-035	8	9.4	10.1	11.3	11.8
28-250-040	9.1	10.8	11.5	12.9	13.5
28-250-045	10.3	12.1	13.0	14.5	15.2
28-250-050	11.4	13.5	14.4	16.1	16.9
28-250-055	12.5	14.8	15.9	17.7	18.6
28-250-060	13.7	16.2	17.3	19.3	20.3
28-250-065	14.8	17.5	18.7	21.0	22.0
28-250-090	20.5	24.3	26.7	29.7	30.4

HIGH PRESSURE CERAMIC ROTATING NOZZLE - ROTOJET 400

MADE IN GERMANY.



Code	Inlet		Outlet	Working Pressure		Temp Rating
	Size	Type	Oroifice	psi	bar	°C
28-250-245	1/4"	BSPF	0.45	5800	400	90
28-250-250	1/4"	BSPF	0.5	5800	400	90
28-250-255	1/4"	BSPF	0.55	5800	400	90
28-250-260	1/4"	BSPF	0.6	5800	400	90
28-250-280	1/4"	BSPF	0.8	5800	400	90
28-250-290	1/4"	BSPF	0.9	5800	400	90

Code	Flow Rate Chart in Ltrs Per Min (LPM)				
	@ 3600 psi	@ 4000 psi	@ 4500 psi	@ 5000 psi	@ 5800 psi
28-250-245	16.2	17	18.1	19.2	20.5
28-250-250	18	18.9	20.4	21.3	22.8
28-250-255	19.8	20.8	22.4	23.5	25.1
28-250-260	21.6	22.7	24.5	25.6	27.4
28-250-280	28.8	30.3	32.1	34.1	36.5
28-250-290	32.4	34.1	36.1	38.4	41

HIGH PRESSURE LANCE EXTENSIONS & HAND GRIP

MADE IN ITALY.



Code	Length	Inlet		Outlet		Working Pressure		Flow Rate	Temp Rating	
	mm	Size	Type	Size	Type	psi	bar	l/min	°C	°F
28-270-150	1500	1/4"	BSPT	1/4"	BSPT	4500	310	45	160	320
28-270-200	2000	1/4"	BSPT	1/4"	BSPT	4500	310	45	160	320
28-205-004-0350	350	-	-	-	-	-	-	-	90	190



PRESSURE WASHER SWIVELS

MALE X FEMALE



Size (Inches)	Type & Thread
	Male BSPT x Female BSP
1/4x1/4	28-280-004-004*
3/8x3/8	28-280-006-006*
3/8x3/8	28-281-006-006

*Brass ^Stainless Steel

PRESSURE WASHER ADAPTORS & COUPLERS

BRASS MALE X FEMALE ADAPTOR
BRASS FEMALE X MALE COUPLER
BRASS MALE X MALE ADAPTOR



Size (Inches)	Type & Thread
	Male M22 x Female BSP Adaptor
M22 x 1/4	28-282-M22-004
M22 x 3/8	28-282-M22-006
Size (Inches)	Type & Thread
	Female M22 x Male BSPP Coupler
M22 x 1/4	28-284-M22-004
M22 x 3/8	28-284-M22-006
Size (Inches)	Type & Thread
	Male M22 x Male BSPP Coupler
M22 x 1/4	28-283-M22-006
M22 x 3/8	28-282-M22-006

PRESSURE WASHER COUPLER

BRASS FEMALE



Size (Inches)	Material, Type & Thread
	Female M22 x Female BSP
M22 x 1/4	28-285-M22-004
M22 x 3/8	28-285-M22-006

PRESSURE WASHER JOINER

BRASS MALE



Size (Inches)	Material, Type & Thread
M22	Male M22 x Male M22 28-286-M22-M22

PRESSURE WASHER JOINER

BRASS FEMALE



Size (Inches)	Material, Type & Thread
M22	Female M22 x Female M22 28-287-M22-M22



TRAVIS TYPE COUPLINGS

These couplings are ideally suited for use in the waste transfer and aquaculture industries.

Note: The entire Travis Type Couplings range and Adaptors are also available.



Size (Inches)	Zinc Plated Coupling Parts				
	Male (inc Seal)	Female (inc Seal)	Closure Ring	Male Seal (Round)	Female Seal (U)
3	-	-	-	-	-
4	21-810-064	21-820-064	21-830-064	21-840-064	21-841-064
5	21-810-080	21-820-080	21-830-080	21-840-080	21-841-080
6	21-810-096	21-820-096	21-830-096	21-840-096	21-841-096
8	-	-	-	-	-

Size (Inches)	Zinc Plated Coupling Parts	
	Male x Female Reducer (inc seal)	Male Plug (inc seal)
3	-	21-860-048
4	-	21-860-064
6	-	21-860-048
6 x 4	21-870-096-064	-

VALVES - PUMP PRO RIV BRASS QUICK OPEN LEVER GATE VALVE



Size (Inches)	Product number	
	BSP	NPT
4	25-205-064	25-205-064N
6	25-205-096	25-205-096N
5	25-206-096*	-

*25-206 denotes square flange one side x BSP

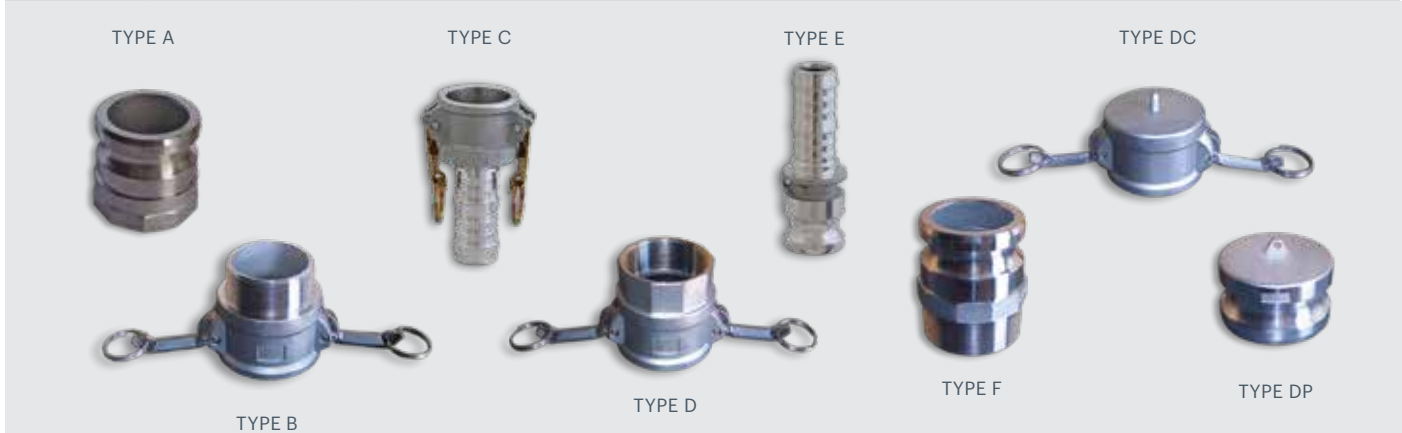
BRASS BALL VALVES

Female x Female BSP Nickel Plated Brass Lever Handle Valve: Ideal for hot/ cold water (non-potable), various oils, chemicals and compressed air.



Size (Inches)	Female x Female BSP	Size (Inches)	Female x Female BSP
1/4	25-000-004	1½	25-000-024
3/8	25-000-006	2	25-000-032
1/2	25-000-008	2½	25-000-040
3/4	25-000-012	3	25-000-048
1	25-000-016	4	25-000-064
1¼	25-000-020	-	-

Size (mm)	Aluminium Camlock	
	Working Pressure	
15	150 psi	Gravity-Cast: General use / Agricultural / Industrial Manufactured using the gravity-casting method. This is the most common / economical of the Aluminium range used for general water applications. NB: Cam & groove couplings must never be used for steam or compressed air applications.
150	75 psi	
200	75 psi	



Size (Inches)	Type A	Type B	Type C	Type D	Type E	Type F	Type DP	Type DC
	Male Camlock x Female Thread	Female Camlock x Male Thread	Female Camlock x Hosetail	Female Camlock x Female Thread	Male Camlock x Hosetail	Male Camlock x Male Thread	Male Camlock Plug	Female Camlock Cap
1/2	20-000-A050	20-000-B050	20-000-C050	20-000-D050	20-000-E050	20-000-F050	20-000-DP050	20-000-DC050
3/4	20-000-A075	20-000-B075	20-000-C075	20-000-D075	20-000-E075	20-000-F075	20-000-DP075	20-000-DC075
3/4 x 1/2	20-000-A075050	20-000-B075050	-	20-000-D075050	-	20-000-F075050	-	-
1	20-000-A100	20-000-B100	20-000-C100	20-000-D100	20-000-E100	20-000-F100	20-000-DP100	20-000-DC100
1-1/4	20-000-A125	20-000-B125	20-000-C125	20-000-D125	20-000-E125	20-000-F125	20-000-DP125	20-000-DC125
1-1/2	20-000-A150	20-000-B150	20-000-C150	20-000-D150	20-000-E150	20-000-F150	20-000-DP150	20-000-DC150
1-1/2 x 2	20-000-A150200	-	-	-	-	20-000-F150200	-	-
2	20-000-A200	20-000-B200	20-000-C200	20-000-D200	20-000-E200	20-000-F200	20-000-DP200	20-000-DC200
2 x 1-1/2	20-000-A200150	20-000-B200150	20-000-C200150	20-000-D200150	20-000-E200150	20-000-F200150	-	-
2 x 3	20-000-A200300	-	-	-	-	-	-	-
2-1/2	20-000-A250	20-000-B250	20-000-C250	20-000-D250	20-000-E250	20-000-F250	20-000-DP250	20-000-DC250
2-1/2 x 2	20-000-A250200	-	20-000-C250200	20-000-D250200	-	20-000-F250200	-	-
3	20-000-A300	20-000-B300	20-000-C300	20-000-D300	20-000-E300	20-000-F300	20-000-DP300	20-000-DC300
3 x 2	20-000-A300200	20-000-B300200	20-000-C300200	20-000-D300200	20-000-E300200	20-000-F300200	-	-
3 x 2-1/2	20-000-A300250	20-000-B300250	20-000-C300250	-	20-000-E300250	-	-	-
3 x 4	20-000-A300400	20-000-B300400	20-000-C300400	-	-	20-000-F300400	-	-
4	20-000-A400	20-000-B400	20-000-C400	20-000-D400	20-000-E400	20-000-F400	20-000-DP400	20-000-DC400
4 x 2-1/2	20-000-A400250	-	-	-	-	-	-	-
4 x 3	20-000-A400300	20-000-B400300	20-000-C400300	20-000-D400300	20-000-E400300	20-000-F400300	-	-
5	20-000-A500	20-000-B500	20-000-C500	20-000-D500	20-000-E500	20-000-F500	20-000-DP500	20-000-DC500
6	20-000-A600	20-000-B600	20-000-C600	20-000-D600	20-000-E600	20-000-F600	20-000-DP600	20-000-DC600
6 x 4	20-000-A600400	-	-	-	-	-	-	-
8	20-000-A800	20-000-B800	20-000-C800	20-000-D800	20-000-E800	20-000-F800	20-000-DP800	20-000-DC800



Motion's standard aluminium cam & groove couplings, reducers & adaptors available in sizes from 1/2" thru to 8" are produced to military standards making them interchangeable with other brands designed and manufactured to the same specification with the exception of 1/2" (12.7mm), 5" (127mm) and 8" (203mm), the A-A-59326A Mil specification does not apply to these sizes due to the presence of two different versions in todays market.



Type BC - 68 hosetail



Type BC - 90 hosetail



Type CA



Type AA

Size (Inches)	Type BC		Type CA	Type AA
	Female Camlock x 68 Hosetail	Female Camlock x 90 Hosetail	Female Camlock x Male Camlock	Male Camlock x Male Camlock
1	-	-	-	20-000-AA100
1-1/4	-	-	-	20-000-AA125
1-1/2	-	-	-	20-000-AA150
2	20-100-BC68200	20-100-BC90200	-	20-000-A200
2 x 1-1/2	-	-	20-000-CA200150	20-000-AA200150
2 x 3	-	-	20-000-CA200300	-
2 X 4	-	-	20-000-CA200400	-
2-1/2	20-100-BC68250	20-100-BC90250	-	20-000-AA250
2-1/2 x 2	-	-	20-000-CA250200	20-000-AA250200
3	20-100-BC68300	20-100-BC90300	-	20-000-AA300
3 x 2	-	-	20-000-CA300200	20-000-AA300200
3 x 2-1/2	-	-	20-000-CA300250	20-000-AA300250
3 x 4	-	-	20-000-CA300400	-
4	20-100-BC68400	20-100-BC90400	-	20-000-AA400
4 x 2	-	-	20-000-CA400200	-
4 x 2-1/2	-	-	20-000-CA400250	20-000-AA400200
4 x 3	-	-	20-000-CA400300	20-000-AA400300
4 x 6	-	-	20-000-CA400600	-
6	20-100-BC68600	-	-	20-000-AA600
6 x 4	-	-	20-000-CA600400	20-000-AA600400



Type DCL



Type LA



Type LC

Size (Inches)	Type DD	Type DCL	Type LA		Type LC
	Female Camlock x Female Camlock	Female Camlock Lockable Cap	Male Camlock x Undrilled Flange	Male Camlock x Table D/E Flange	Female Camlock x Undrilled Flange
1	-	-	-	-	-
1-1/4	-	-	-	-	-
1-1/2	20-000-DD150	20-000-DCL150	-	-	-
2	20-000-DD200	20-000-DCL200	20-100-LAU200	20-100-LAD200	20-100-LCU200
2 x 1-1/2	-	-	-	-	-
2 x 3	-	-	-	-	-
2 X 4	-	-	-	-	-
2-1/2	-	20-000-DCL250	20-100-LAU250	20-100-LAD250	-
2-1/2 x 2	-	-	-	-	-
3	20-000-DD300	20-000-DCL300	20-100-LAU300	20-100-LAD300	20-100-LCU300
3 x 2	20-000-DD300200	-	-	-	-
3 x 2-1/2	-	-	-	-	-
3 x 4	-	-	-	-	-
4	20-000-DD400	20-000-DCL400	20-100-LAU400	20-100-LAD400	20-100-LCU400
4 x 2	-	-	-	-	-
4 x 2-1/2	-	-	-	-	-
4 x 3	20-000-DD400300	-	-	-	-
4 x 6	-	-	-	-	-
6	-	20-000-DCL600	20-100-LAU600	20-100-LAD600	-
6 x 4	-	-	-	-	-

BAUER TYPE B COUPLINGS

Bauer Type Couplings are quick action fittings with four parts:- Male Ball, Closure Ring Female Socket and Sealing Ring.

Note: Other sizes up to 12" also available on request. Stainless Steel made to order.



Size (inches)	Zinc Plated Coupling Parts			
	Male Ball x Hose Tail	Female x Hose Tail (INC Seal)	Closure Rings	Replacement Seals
2	21-510-032	21-520-032	21-530-032	21-540-032
3	21-510-048	21-520-048	21-530-048	21-540-048
4	21-510-064	21-520-064	21-530-064	21-540-064
5	21-510-080	21-520-080	21-530-080	21-540-080
6	21-510-096	21-520-096	21-530-096	21-540-096
8	21-510-128	21-520-128	21-530-128	21-540-128

Bauer type couplings can be quickly and easily assembled with three manual movements providing a leak proof connection in both suction and pressure applications of up to 20bar, the spherical construction of the ball and socket joint ensures the seal is equally efficient even with an angular deviation of up to 30 degrees.

**BAUER TYPE B
COUPLINGS
FLANGED TABLE D**



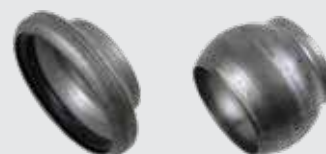
Size (inches)	Zinc Plated Coupling Parts	
	Male x Flange (inc Closure Ring)	Female x Flange (inc Seal)
2	21-550-032	-
3	21-550-048	21-560-048
4	21-550-064	21-560-064
6	21-550-096	21-560-096
8	21-550-128	21-560-128

**BAUER TYPE B
COUPLINGS
MALE BSP BAUER TYPE**



Size (inches)	Zinc Plated Coupling Parts			
	Female x BSPT (inc seal)	Male x BSPT	Female cap (inc seal)	Male Plug
2	21-570-032	21-580-032	-	-
3	21-570-048	21-580-048	21-590-048	21-591-048
4	21-570-064	21-580-064	21-590-064	21-591-064
6	21-570-096	21-580-096	21-590-096	21-591-096
8	-	-	21-590-128	21-591-128

**BAUER TYPE B
COUPLINGS WELD ONS**



Size (inches)	Zinc Plated Coupling Parts	
	Female Weld-on (inc seal)	Male Weld-on
2	-	-
3	21-681-048	21-690-048
4	21-681-064	21-690-064
6	21-681-096	21-690-096
8	21-681-128	21-690-128

**BAUER TYPE B
COUPLINGS REDUCERS**



FEMALE X MALE SIZE (INCHES)	Zinc Plated Coupling Parts	
	Female x Male Enlarger	Female x Male Reducer
4 x 6	21-620-064-096	-
6 x 4	-	21-621-096-064
6 x 8	21-620-069-128	-
8 x 6	-	21-621-128-096



MOTION

Delivering a world-class customer-first approach providing excellence and expertise in industrial products, solutions and services.

MOTION
FLUID POWER SOLUTIONS

Specialists in Fluid Power Solutions tailored to keep your equipment moving.

MOTION
ENGINEERING & SERVICES

Specialist design and engineering, manufacturing, repair and maintenance services.

Anytime. Anywhere.
Always Here.™



Find a location near you!

Scan the QR Code to find out more
or visit [Motion.com.au](https://www.motion.com.au)