

FOOD AND BEVERAGE

Industry Guide

WHO WE ARE.

Motion delivers a world-class customer-first approach to everything we do. This has firmly established our business as the leader in the market, providing excellence and expertise in industrial products, solutions and services.

For more than 100 years we have been a feature in the Australian industrial landscape giving customers unmatched products and service through an integrated network of branches, workshops and service centres.

We have an ongoing commitment to invest in our people, facilities, IT and systems to ensure we can continue to offer a broad ranging and premium level of engineering design, servicing and turnkey projects to our customers across Australia.

We are committed and proud to keep our customers in motion, every day of the year.

“WE KEEP THE WORLD MOVING”



CONTENTS

WHO IS MOTION FLUID POWER SOLUTIONS	4
--	----------

HOSE ASSEMBLY MANUFACTURING CAPABILITIES	5
---	----------

RUBBER HOSES	6
Food & Beverage	6
Steam & Washdown	9

PVC PRESSURE HOSES	10
Petrol & Oil	10
Washdown	11
Food & Beverage	12

DUCTING HOSES	15
Ducting	15

HOSETAIL FITTINGS	16
Hosetails - Standard	16

STAINLESS STEEL FITTINGS	17
BSP Screwed	17
Hygienic	20

FITTING VALVES	24
Ball Valves	24

FITTING CAMLOCKS	25
Camlocks Standard	25

FITTING GUNS & NOZZLES	27
Washdown	27

METALLIC HOSE & EXPANSION JOINTS	28
---	-----------

HOSE MANAGEMENT PROGRAM	29
--------------------------------	-----------



WHO IS MOTION FLUID POWER SOLUTIONS

Based on the rich history of our heritage Hardy Spicer, Powell Industrial, Advanced Industrial Products, Hose Supplies Pacific, Hydraulics Network and CRAM businesses, Motion Fluid Power Solutions is Australia's largest integrated fluid solutions company with locations nationally all with fully equipped hose assembly centres that can manufacture, test, certify and package any fluid conveyance needs you may have.

It's not just about the products it's also about how our people support our customers by providing:

- Service, value and advice to ensure we stay connected
- Industry and technical expertise across all the industries we service
- Strong customer service ethos – serve, perform, respect, innovate team.

We aim every day to provide our customers with tailored solutions when required, supported by our world class team.





HOSE ASSEMBLY MANUFACTURING CAPABILITIES

Motion Fluid Power Solutions has hose assembly and testing facilities across its vast branch network in Asia Pacific. We boast industry-leading equipment and state-of-the-art assembly centres with knowledgeable and trained hose assembly specialists.

Motion Fluid Power Solutions deliver precise and accurate hose assembly and crimping processes up to 8"/200mm capacity throughout our well-equipped Hose Assembly Manufacturing Facilities. On-site reliable and accurate testing of hose assemblies be it pressure, water, hydraulic, and vacuum up to a pressure rating of 24,000psi. Our Hose Assembly Centres are conveniently located across Brisbane,

Mackay, Townsville, Sydney, Newcastle, Melbourne, Adelaide, Hobart, and Perth.

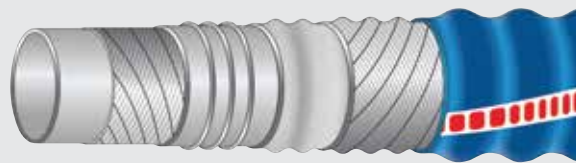
Our specialty is the supply of fitted hose assemblies that can be tagged, tested, and implanted with an RFID Microchip to track the hose assembly through its life cycle. All our hose assemblies are built to the relevant NAHAD or Australian Standard, to ensure total compliance to every legislation. If required, any hose assembly built at Motion can be subjected to either vacuum or suction testing. All testing is carried out in strict accordance with Australian Standard AS 1180 7J & NAHAD Standard.



FOOD & BEVERAGE

MILLENNIUM EASY CORRUGATED FOOD & BEVERAGE HOSE

Is a flexible hose perfect for all food products, designed for the suction and delivery of many food products such as olive oil, wine, beer, fruit juices, fatty foods, milk and alcohol up to 96%.



Part Number	ID	Nom. OD	Working Pressure		Vacuum Rating	Bend Radius	Weight	Length	Cut Policy
	mm	mm	psi	bar	in/hg	mm	kg/m	metres	metres
10-625-025-***	25.4	40.0	150	10	26.63	75	0.65	20	1
10-625-032-***	31.8	48.0	150	10	26.63	95	0.85	20	1
10-625-038-***	38.1	56.0	150	10	26.63	115	1.04	20	1
10-625-051-***	50.8	69.0	150	10	26.63	150	1.45	20	1
10-625-063-***	63.5	82.0	150	10	26.63	195	1.75	20	1
10-625-076-***	76.2	94.0	150	10	26.63	225	2.17	20	1
10-625-102-***	101.6	119.0	150	10	26.63	350	2.98	20	1

REINFORCEMENT: High tensile textile cord with steel wire helix

INNER TUBE: White smooth synthetic rubber

COVER: Blue corrugated synthetic rubber

TEMPERATURE: -30°C TO +100°C

STANDARDS: FDA tit.21 art.177.2600 aqueous and fatty foods, 3-A Sanitary Standards no18-03 class II, BfR XXI Cat.2 foods. D.M. 21/03/73 aqueous, fatty foods and alcohol up to 96%, Reg. EC 1935/04 and EC 2023/06

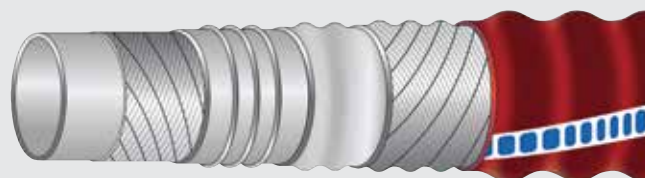
SAFETY FACTOR: 3:1

ADVANTAGES:

- Food quality, taste free and odourless
- Weathering and ozone resistant
- Bisphenol and phthalates free
- Meets global, food standards
- Heavy metal tested

VINOFLEX EASY® CORRUGATED FOOD & BEVERAGE HOSE

Is a lightweight and flexible hose with a thermoplastic cover designed for suction and delivery of non fatty foods such as vintage wines and alcohols up to 96%.



Part Number	ID	Nom. OD	Working Pressure		Vacuum Rating	Bend Radius	Weight	Length	Cut Policy
	mm	mm	psi	bar	in/hg	mm	kg/m	metres	metres
10-640-025-***	25.4	40.0	150	10	17.72	75	0.65	20	1
10-640-032-***	31.8	48.0	150	10	17.72	95	0.85	20	1
10-640-038-***	38.1	56.0	150	10	17.72	115	1.12	20	1
10-640-051-***	50.8	69.0	150	10	17.72	150	1.44	20	1
10-640-063-***	63.5	82.0	150	10	17.72	195	1.76	20	1
10-640-076-***	76.2	94.0	150	10	17.72	225	2.18	20	1
10-640-102-***	101.6	119.0	150	10	17.72	350	2.88	20	1

REINFORCEMENT: High tensile textile cord with steel wire helix

INNER TUBE: White smooth IIR

COVER: Red corrugated translucent thermoplastic

TEMPERATURE: -40°C TO +120°C

SAFETY FACTOR: 3:1

STANDARDS: FDA tit.21 art.177.2600 aqueous foods, Reg. EC 1935/04 and EC 2023/06, BfR XXI Cat.2 foods. D.M. 21/03/73 aqueous and alcohol up to 96%.

ADVANTAGES:

- Light weight and extremely flexible
- Food quality, taste free and odourless
- Weather resistant, low friction easy glide cover
- Bisphenol and phthalates free
- Meets global food standards
- Heavy metal tested

FOODFLEX® IIR MILK TANKER SUCTION & DELIVERY HOSE

Is a flexible and easy to handle hose designed specifically for suction and delivery of milk and foodstuffs. The lightweight structure makes it particularly flexible and easy to handle, making it ideally suited as a milk collection hose on tank trucks (not suitable for connections less than 2mtrs).



Part Number	ID	Nom. OD	Working Pressure		Vacuum Rating	Bend Radius	Weight	Length	Cut Policy
	mm	mm	psi	bar	in/hg	mm	kg/m	metres	metres
10-630-025-***	25.4	36.0	90	6	20.67	55	0.75	30	1
10-630-032-***	31.8	43.0	90	6	20.67	70	0.96	30	1
10-630-038-***	38.1	49.5	90	6	17.72	85	1.22	30	1
10-630-051-***	50.8	62.5	90	6	17.72	110	1.65	30	1
10-630-063-***	63.5	76.5	90	6	14.77	140	2.21	30	1
10-630-076-***	76.2	89.5	90	6	14.77	170	2.70	30	1
10-630-102-***	101.6	116.0	90	6	11.81	225	3.63	30	1

REINFORCEMENT: High tensile textile cord with steel wire helix

INNER TUBE: White smooth IIR

COVER: Blue smooth synthetic rubber

TEMPERATURE: -40°C TO +120°C

SAFETY FACTOR: 3:1

STANDARDS: FDA tit.21 art.177.2600 aqueous foods, Reg. EC 1935/04 and EC 2023/06, BfR XXI Cat.2 foods. D.M. 21/03/73 aqueous and alcohol up to 96%

ADVANTAGES:

- Weather and abrasion resistant
- Food quality IIR Rubber
- Lightweight, flexible and easy to handle
- Meets global food standards
- Heavy metal tested
- Bisphenol and phthalates free

OPTIMA® EF691 FOOD & BEVERAGE SUCTION & DELIVERY HOSE

Is designed for the suction and or discharge of wine, beer and other liquid foodstuffs such as milk, cider, fruit juice and alcohol (up to 60%).



Part Number	ID	Nom. OD	Working Pressure		Vacuum Rating	Bend Radius	Weight	Length	Cut Policy
	mm	mm	psi	bar	in/hg	mm	kg/m	metres	metres
10-605-019-***	19.1	31.0	150	10	26.58	85	0.785	20	1
10-605-025-***	25.4	39.0	150	10	26.58	115	1.135	20	1
10-605-032-***	31.8	46.0	150	10	26.58	145	1.457	20	1
10-605-038-***	38.1	52.0	150	10	26.58	170	1.651	20	1
10-605-051-***	50.8	66.0	150	10	26.58	230	2.414	20	1
10-605-063-***	63.5	80.0	150	10	26.58	285	3.109	20	1
10-605-076-***	76.2	93.0	150	10	26.58	345	3.946	20	1
10-605-102-***	101.6	120	150	10	26.58	455	5.678	20	1

REINFORCEMENT: High tensile textile cord with wire helix

INNER TUBE: White smooth EPDM blend

COVER: Red wrapped EPDM blend

TEMPERATURE: -20°C TO +100°C

SAFETY FACTOR: 3:1

ADVANTAGES:

- Smooth seamless white FDA quality inner tube
- Excellent resistance to kinking
- Flexible and easy to handle

FOOD & BEVERAGE

OPTIMA® EF690 FOOD / BEVERAGE DELIVERY HOSE

The OPTIMA® EF690 was designed for the discharge of wine, beer and other liquid foodstuffs such as milk, cider, fruit juice and alcohol (up to 60%).



Part Number	ID	Nom. OD	Working Pressure		Bend Radius	Weight	Length	Cut Policy
	mm	mm	psi	bar	mm	kg/m	metres	metres
10-615-025-***	25.0	39.0	150	10	205	1.020	20	1
10-615-032-***	32.0	46.0	150	10	255	1.290	20	1
10-615-038-***	38.0	54.0	150	10	305	1.710	20	1
10-615-051-***	51.0	68.0	150	10	405	2.380	20	1
10-615-063-***	63.0	79.0	150	10	560	2.770	20	1
10-615-076-***	76.0	93.0	150	10	610	3.320	20	1
10-615-102-***	102.0	120.0	150	10	815	4.760	20	1

REINFORCEMENT: High tensile textile cord

INNER TUBE: White EPDM FDA quality

COVER: Red EPDM/NR blend

TEMPERATURE: -20°C to +100°C

STANDARDS: Conforms to FDA Requirements

SAFETY FACTOR: 3:1

ADVANTAGES:

- Smooth seamless white EPDM food grade inner tube
- Non-marking abrasion resistant outer cover
- Flexible & easy to handle
- Resistant to cleaning with detergents at temp up to 130°C (intermittent several minutes at a time only)

CHEMICAL

EXITFLEX® EF645 UHMPWE CHEMICAL SUCTION & DELIVERY (FDA)

Has been designed for the transfer of a variety of current industrial chemicals used today. For use in pressure, gravity flow and/or suction service.



Part Number	ID	Nom. OD	Working Pressure		Vacuum Rating	Bend Radius	Weight	Length	Cut Policy
	mm	mm	psi	bar	in/hg	mm	kg/m	metres	metres
10-980-019-***	19.1	29.0	250	17	26.58	125	0.65	20	1
10-980-025-***	25.4	37.0	250	17	26.58	150	0.85	20	1
10-980-032-***	31.8	43.0	250	17	26.58	250	1.02	20	1
10-980-038-***	38.1	49.0	250	17	26.58	300	1.19	20	1
10-980-051-***	50.8	64.0	250	17	26.58	550	1.71	20	1
10-980-063-***	63.5	77.0	250	17	26.58	450	2.03	20	1
10-980-076-***	76.2	92.0	250	17	26.58	560	3.07	20	1
10-980-102-***	101.6	117.0	250	17	26.58	700	4.04	20	1

REINFORCEMENT: High tensile textile braid with steel wire helix

INNER TUBE: White UHMPWE/FDA

COVER: Blue corrugated EPDM

TEMPERATURE: -40°C TO +110°C

STANDARDS: FDA Approved

SAFETY FACTOR: 3:1

ADVANTAGES:

- Corrugated highly flexible hose
- Weather and abrasion resistant cover
- Can be used with wide variety of chemicals
- FDA tube

STEAM & WASHDOWN

OPTIMA® PP5102 CLEANWASH FDA WHITE WASHDOWN HOSE

Is designed for use on steam mixers for plant washdown applications, the white food grade tube makes it ideally suited for use in dairies, canneries, abattoirs and other food processing plants including bottling plants and breweries.



Part Number	ID	Nom. OD	Working Pressure		Bend Radius	Weight	Length	Cut Policy
	mm	mm	psi	bar	mm	kg/m	metres	metres
08-605-012-***	12.7	24.0	300	20	100	0.48	20 / 100	1
08-605-019-***	19.1	30.2	300	20	155	0.82	20 / 100	1
08-605-025-***	25.4	38.1	300	20	205	0.99	20 / 100	1

REINFORCEMENT: High tensile textile cord

INNER TUBE: White smooth EPDM blend

COVER: White smooth EPDM blend

TEMPERATURE: -40°C TO +120°C

SAFETY FACTOR: 3:1

ADVANTAGES:

- Excellent resistance to ageing, atmospheric conditions and ozone
- Tube compound comprised of FDA compliant materials
- Resistant to animal and vegetable fats
- Non marking outer cover
- Superior flexibility

OPTIMA® PP5102 PUREWASH WASHDOWN HOSE

Is designed for use in several washdown applications such as dairies, canneries, abattoirs and other food processing plants including bottling plants and breweries.



Part Number	ID	Nom. OD	Working Pressure		Bend Radius	Weight	Length	Cut Policy
	mm	mm	psi	bar	mm	kg/m	metres	metres
08-655-012-***	12.7	23.0	300	20	100	0.42	20 / 30 / 100	1
08-655-019-***	19.1	31.0	300	20	155	0.68	20 / 100	1
08-655-025-***	25.4	38.1	300	20	205	1.02	20 / 100	1

REINFORCEMENT: High tensile textile cord

INNER TUBE: White smooth NBR

COVER: Blue NBR blend

TEMPERATURE: -40°C TO +99°C

SAFETY FACTOR: 3:1

ADVANTAGES:

- Excellent resistance to ageing, atmospheric conditions and ozone
- Tube compound comprised of FDA compliant materials
- Resistant to animal and vegetable fats
- Superior flexibility

PETROL & OIL

OPTIMA® PVC CLEAR BRAIDED MULTI PURPOSE HOSE

Clear multipurpose hose for the transfer of air, water, petroleum and food products. Suitable for general industrial and agricultural applications.



Part Number	ID	Nom. OD	Working Pressure @ 20°C		Bend Radius	Weight	Length (R = Reel)	Cut Policy
	mm	mm	psi	mPa	mm	kg/m	metres	metres
00-200-006-***	6.3	11.1	250	1.7	65	0.08	20 / 100R / 300R	2
00-200-008-***	7.9	13.5	250	1.7	75	0.10	20 / 100R / 300R	2
00-200-010-***	9.5	16.0	250	1.7	85	0.14	20 / 100R / 300R	2
00-200-012-***	12.7	18.0	250	1.7	100	0.19	20 / 100R / 200R	2
00-200-016-***	15.8	21.5	250	1.7	130	0.30	20 / 100R	2
00-200-019-***	19.1	25.5	250	1.7	150	0.40	20 / 60R / 100R	2
00-200-025-***	25.4	32.5	250	1.7	180	0.54	20 / 60R / 100	2
00-200-032-***	31.8	39.5	150	1.0	220	0.97	20 / 60	2
00-200-038-***	38.1	49.5	150	1.0	250	1.32	20	2
00-200-051-***	50.8	61.0	150	1.0	320	2.12	20	2

REINFORCEMENT: Polyester braid with coloured red and gold tracers

INNER TUBE: Clear smooth PVC

COVER: Clear smooth PVC

TEMPERATURE: -5°C TO +60°C

SAFETY FACTOR: 4:1

STANDARDS:

AS/NZS 2554 Class B and C

AS/NZS 2070

ADVANTAGES:

- Non toxic suitable for food contact
- UV stabilised
- Genuine multipurpose
- Metre marked for measuring and cutting ease

WASHDOWN

OPTIMA® PREMIUM BLUE STRIPE WASHDOWN

Premium washdown hose ideally suited to many cold washdown applications, especially on dairy farms. The white cover with blue stripe is smooth for ease of handling and has unmatched performance and flexibility.



Part Number	ID	Nom. OD	Working Pressure @ 20°C		Bend Radius	Weight	Length (R = Reel)	Cut Policy
	mm	mm	psi	mPa	mm	kg/m	metres	metres
00-110-012-***	12.7	19.0	150	1.0	100	0.22	20 / 100R	5
00-110-019-***	19.1	27.4	150	1.0	140	0.40	20 / 60R / 100R	5
00-110-025-***	25.4	34.5	150	1.0	180	0.58	20 / 60R / 100	5
00-110-032-***	31.8	42.5	150	1.0	210	0.85	20 / 60 / 100	5
00-110-038-***	38.1	49.0	150	1.0	250	1.11	20 / 60	5

REINFORCEMENT: High tenacity polyester yarn

INNER TUBE: White smooth PVC

COVER: White smooth PVC with blue stripe

TEMPERATURE: -5°C TO +60°C

SAFETY FACTOR: 4:1

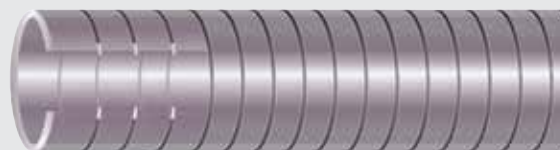
ADVANTAGES:

- Easy to handle
- Kink resistant
- UV stabilised giving excellent U.V. resistance
- Excellent cold weather flexibility
- Metre marked for measuring and cutting ease
- AN/NZS 2554 Class C

FOOD & BEVERAGE

IPL PLUTONE A CLEAR PVC FOOD & BEVERAGE SUCTION HOSE

Is suitable for the suction and delivery of liquids and substances (except fatty foods) such as beverages, fruit juices, wine, vinegar and liquors with an alcohol content of up to 20%, it is often used for filling machines and dispensers.



Part Number	ID	Nom. OD	Working Pressure @ 20°C		Vacuum Rating @ 20°C	Bend Radius	Weight	Length	Cut Policy
	mm	mm	psi	bar	in/hg	mm	kg/m	metres	metres
02-600-008-***	7.9	14.2	72	5.0	27.50	40	0.16	20	2
02-600-010-***	9.5	16.0	72	5.0	27.50	50	0.17	20	2
02-600-012-***	12.7	18.0	72	5.0	27.50	50	0.20	20 / 60	2
02-600-014-***	14.2	20.0	72	5.0	27.50	60	0.23	20	2
02-600-016-***	15.8	22.4	72	5.0	27.50	70	0.27	20 / 60	2
02-600-019-***	19.1	26.0	72	5.0	27.50	90	0.34	20 / 60	2
02-600-025-***	25.4	33.0	58	4.0	27.50	110	0.51	20 / 60	2
02-600-032-***	31.8	40.4	58	4.0	24.60	140	0.65	20 / 60	2
02-600-038-***	38.1	47.0	58	4.0	24.60	170	0.81	20 / 60	2
02-600-051-***	50.8	60.8	58	4.0	23.10	230	1.27	20 / 60	2
02-600-063-***	63.5	74.8	52	3.6	23.10	280	1.19	20	2
02-600-076-***	76.2	88.2	52	3.6	20.30	340	2.23	20	2
02-600-088-***	88.9	103.0	43	3.0	20.30	410	3.03	20	2
02-600-102-***	101.6	115.0	34	2.4	20.30	460	3.40	20	2
02-600-127-***	127.0	144.4	17	1.2	26.10	640	5.57	20	2
02-600-152-***	152.4	169.6	17	1.2	26.10	760	6.95	20	2

REINFORCEMENT: Steel wire helix

INNER TUBE: Clear smooth PVC-P

COVER: Clear smooth PVC-P

TEMPERATURE: - 10°C TO +60°C

SAFETY FACTOR: 5:1

STANDARDS: Conforms to AS 2070 and EU 10/2011 (classes A,B,C)

ADVANTAGES:

- Excellent resistance to ageing, atmospheric conditions and ozone
- Clear sidewall enabling for visible checks of material flow
- Smooth bore to minimise flow resistance
- Resistant to several chemicals
- Conductive to ($R < 10^2$ Ohm/mtr) by grounding the helix wire
- Suitable for the transfer of foodstuffs according to EU regulations

OPTIMA® PP6205 CLEAR / RED PVC FOOD & BEVERAGE SUCTION HOSE

Is a general purpose food suction hose which has been formulated for the conveyance of beverages, fruit juices and wine with an alcohol content up to 28% as well as milk and other dairy products. The clear wall provides excellent visibility to help spot any blockages.



Part Number	ID	Nom. OD	Working Pressure @ 20°C		Vacuum Rating @ 20°C	Bend Radius	Weight	Length	Cut Policy
	mm	mm	psi	bar	in/hg	mm	kg/m	metres	metres
02-610-025-***	25.0	31.5	87	6.0	29.92	75	0.39	20	0
02-610-032-***	32.0	39.1	80	5.5	29.92	100	0.51	20	0
02-610-038-***	38.0	46.2	72	5.0	29.92	150	0.65	20	0
02-610-044-***	44.0	52.6	72	5.0	29.92	180	0.84	20	0
02-610-051-***	50.0	60.7	72	5.0	29.92	200	1.10	20	0
02-610-063-***	63.0	74.4	72	5.0	29.92	250	1.50	20	0
02-610-076-***	76.0	87.1	60	4.1	29.92	300	1.80	20	0
02-610-102-***	102.0	115.1	56	3.9	29.92	380	3.00	20	0
02-610-127-***	127.0	141.0	34	2.3	27.95	560	3.93	20	0
02-610-152-***	152.0	169.4	32	2.2	27.95	640	5.51	20	0

REINFORCEMENT: Red rigid anti-shock PVC

INNER TUBE: Clear smooth PVC

COVER: Clear smooth PVC

TEMPERATURE: -20°C TO +60°C

SAFETY FACTOR: 3:1

ADVANTAGES:

- Able to handle liquors with an alcohol content up to 28%
- Resistant to milk and animal fats
- Smooth inner tube
- Clear side wall to help with identification of blockages
- Phthalate and phenol free
- Complies with FDA, USDA, 3A sanitary standards requirements

FOOD & BEVERAGE

IPL® PLUTONE PRESS BIO CLEAR BRAIDED FOOD & BEVERAGE SUCTION & DELIVERY HOSE

Is a food grade hose suitable for the suction and delivery of liquids and substances (except fatty foods) such as beverages, fruit juices, wine, vinegar and liquors with an alcohol content of up to 50% as well as milk and dairy products, it is often used for filling machines and dispensers.



Part Number	ID	Nom. OD	Working Pressure @ 20°C		Vacuum Rating @ 20°C	Bend Radius	Weight	Length	Cut Policy
	mm	mm	psi	bar	in/hg	mm	kg/m	metres	metres
02-630-019-***	19.1	29.0	203	14.0	28.96	60	0.48	60	0
02-630-025-***	25.4	35.0	174	12.0	28.96	75	0.66	60	0
02-630-038-***	38.1	49.0	145	10.0	26.06	110	1.03	30	0
02-630-051-***	50.8	63.0	116	8.0	23.17	150	1.65	30	0
02-630-076-***	76.2	91.0	87	6.0	20.27	230	2.69	30	0
02-630-102-***	101.6	118.0	72	5.0	20.27	310	3.85	20	0

REINFORCEMENT: High tensile polyester yarn with steel wire helix

INNER TUBE: Clear smooth Bio based compound

COVER: Clear smooth Bio based compound

TEMPERATURE: -10°C TO +60°C

SAFETY FACTOR: 3:1

STANDARDS: EU 10/2011 (classes A,B,C and D1) and FDA regulations (CFR 21 Item 176.170)

ADVANTAGES:

- Excellent resistance to ageing, atmospheric conditions and ozone
- Smooth bore to minimise flow resistance
- Resistant to several chemicals
- Conductive by grounding the helix wire
- Food grade according to EU and FDA regulations

DUCTING

OPTIMA® POLYURETHANE DUCTING WITH PVC HELIX & STATIC WIRE

Is an abrasion resistant ducting designed for conveying material such as pellets, powders, granulates and food stuffs. It has a smooth internal bore to maximise optimal flow to prevent material blockages and a corrugated outer surface making it extremely flexible. With a food grade compound and copper grounding wire it is ideally suited for conveying food stuffs where static build up occurs.



Part Number	ID	Nom. OD		Working Pressure		Vacuum Rating	Bend Radius	Weight	Length	Cut Policy
		Min	Max	psi	bar					
		mm	mm	mm	mm					
06-810-032-***	31.8	32.6	37.6	20	1.4	15.00	35	0.190	20	1
06-810-038-***	38.1	39.1	46.2	20	1.4	15.00	50	0.240	20	1
06-810-051-***	50.8	51.8	60.9	15	1.0	12.00	70	0.350	20	1
06-810-063-***	63.5	64.5	73.7	10	0.7	10.00	80	0.540	20	1
06-810-076-***	76.2	77.4	87.1	10	0.7	10.00	100	0.640	20	1
06-810-080-***	*80.0	81.2	89.0	10	0.7	4.63	110	0.680	20	1
06-810-088-***	*90.0	91.2	99.2	8	0.55	4.05	125	0.790	20	1
06-810-102-***	102.0	103.2	113.8	8	0.55	8.00	140	0.870	20	1
06-810-127-***	127.0	128.2	139.7	7	0.48	7.00	170	1.260	20	1
06-810-152-***	152.4	153.8	166.4	6	0.41	5.00	200	1.610	20	1
06-810-178-***	*180.0	181.4	194.4	4	0.27	1.16	250	2.300	20	1
06-810-203-***	203.2	204.6	218.4	4	0.27	3.00	260	2.410	20	1
06-810-254-***	250.0	251.6	270.0	3	0.2	2.00	300	3.570	10	0

REINFORCEMENT: Ivory rigid anti-shock PVC helix

INNER TUBE: Transperant smooth ether based TPU

COVER: Transperant smooth ether based TPU

TEMPERATURE:

- 40°C TO +65°C

* - 40°C TO +80°C

ADVANTAGES:

- Excellent resistance to ageing, atmospheric conditions and ozone
- Lightweight and extremely flexible
- Excellent abrasion resistance
- Food grade according to FDA
- Clear sidewall enabling for visible checks of material flow
- Copper grounding wire for conductivity
- Raised helix provides for easy drag

HOSETAILS – STANDARD



STAINLESS MALE HOSETAILS

Working Pressure 150 psi

Size (Inches) Hosetail x Thread	Material & Type
	Hosetail x Male BSPT
1/8 x 1/8	22-210-002-002
1/4 x 1/8	22-210-004-002
1/4 x 1/4	22-210-004-004
5/16 x 1/4	22-210-005-004
3/8 x 1/4	22-210-006-004
3/8 x 3/8	22-210-006-006
3/8 x 1/2	22-210-006-008
1/2 x 1/4	22-210-008-004
1/2 x 3/8	22-210-008-006
1/2 x 1/2	22-210-008-008
1/2 x 3/4	22-210-008-012
5/8 x 1/2	22-210-010-008
5/8 x 3/4	22-210-010-012
3/4 x 1/2	22-210-012-008
3/4 x 3/4	22-210-012-012
3/4 x 1	22-210-012-016

Size (Inches) Hosetail x Thread	Material & Type
	Hosetail x Male BSPT
1 x 3/4	22-210-016-012
1 x 1	22-210-016-016
1 x 1 1/4	22-210-016-020
1 x 1 1/2	22-210-016-024
1 x 2	22-210-016-032
1 1/4 x 1	22-210-020-016
1 1/4 x 1 1/4	22-210-020-020
1 1/4 x 1 1/2	22-210-020-024
1 1/2 x 1 1/4	22-210-024-020
1 1/2 x 1 1/2	22-210-024-024
1 1/2 x 2	22-210-024-032
2 x 1 1/2	22-210-032-024
2 x 2	22-210-032-032
2 1/2 x 2 1/2	22-210-040-040
3 x 3	22-210-048-048
4 x 4	22-210-064-064

BSP SCREWED



HEX NIPPLES

Working Pressure 150 psi

Size (Inches)	Thread
	BSPT
1/8 x 1/8	54-000-002
1/4 x 1/4	54-000-004
3/8 x 3/8	54-000-006
1/2 x 1/2	54-000-008
3/4 x 3/4	54-000-012
1 x 1	54-000-016
1½ x 1½	54-000-024

Size (Inches)	Thread
	BSPT
2 x 2	54-000-032
2½ x 2½	54-000-040
3 x 3	54-000-048
4 x 4	54-000-064



REDUCING BUSHES

Working Pressure 150 psi

Male x Female Size (Inches)	Thread
	BSPT
1/4 x 1/8	54-020-004-002
3/8 x 1/8	54-020-006-002
3/8 x 1/4	54-020-006-004
1/2 x 1/8	54-020-008-002
1/2 x 1/4	54-020-008-004
1/2 x 3/8	54-020-008-006
3/4 x 1/4	54-020-012-004
3/4 x 3/8	54-020-012-006
3/4 x 1/2	54-020-012-008
1 x 1/4	54-020-016-004
1 x 3/8	54-020-016-006
1 x 1/2	54-020-016-008
1 x 3/4	54-020-016-012
1¼ x 1/2	54-020-020-008
1¼ x 3/4	54-020-020-012

Male x Female Size (Inches)	Thread
	BSPT
1½ x 1	54-020-020-016
1½ x 1/2	54-020-024-008
1½ x 3/4	54-020-024-012
1½ x 1	54-020-024-016
1½ x 1¼	54-020-024-020
2 x 1	54-020-032-016
2 x 1¼	54-020-032-020
2 x 1½	54-020-032-024
2½ x 1½	54-020-040-024
2½ x 2	54-020-040-032
3 x 2	54-020-048-032
3 x 2½	54-020-048-040
4 x 2	54-020-064-032
4 x 2½	54-020-064-040
4 x 3	54-020-064-048

BSP SCREWED



BARREL UNION

Working Pressure 150 psi

Size (Inches)	Type & Thread	
	Female x Female BSP	Male x Female BSP
1/8 x 1/8	54-080-002	-
1/4 x 1/4	54-080-004	54-082-004
3/8 x 3/8	54-080-006	54-082-006
1/2 x 1/2	54-080-008	54-082-008
3/4 x 3/4	54-080-012	54-082-012
1 x 1	54-080-016	54-082-016
1¼ x 1¼	54-080-020	54-082-020
1½ x 1½	54-080-024	-
2 x 2	54-080-032	-
3 x 3	54-080-048	-
4 x 4	54-080-064	-



ELBOWS 45°

Working Pressure 150 psi

Size (Inches)	Thread
	BSP
1/2 x 1/2	54-110-008
3/4 x 3/4	54-110-012
1 x 1	54-110-016
1¼ x 1¼	54-110-020
1½ x 1½	54-110-024
2 x 2	54-110-032
3 x 3	54-110-048



TEES

Working Pressure 150 psi

Size (Inches)	Thread
	BSP
1/8	54-180-002
1/4	54-180-004
3/8	54-180-006
1/2	54-180-008
3/4	54-180-012
1	54-180-016
1 1/4	54-180-020

Size (Inches)	Thread
	BSP
1 1/2	54-180-024
2	54-180-032
2 1/2	54-180-040
3	54-180-048
4	54-180-064



ELBOWS 90°

Working Pressure 150 psi

Size (Inches)	Thread
	BSP
1/8 x 1/8	54-130-002
1/4 x 1/4	54-130-004
3/8 x 3/8	54-130-006
1/2 x 1/2	54-130-008
3/4 x 3/4	54-130-012
1 x 1	54-130-016
1 1/4 x 1 1/4	54-130-020

Size (Inches)	Thread
	BSP
1 1/2 x 1 1/2	54-130-024
2 x 2	54-130-032
2 1/2 x 2 1/2	54-130-040
3 x 3	54-130-048
4 x 4	54-130-064




ELBOWS 90°

Working Pressure 150 psi

Size (Inches)	Thread
	BSP
1/8 x 1/8	54-140-002
1/4 x 1/4	54-140-004
3/8 x 3/8	54-140-006
1/2 x 1/2	54-140-008
3/4 x 3/4	54-140-012
1 x 1	54-140-016
1 1/4 x 1 1/4	54-140-020


Size (Inches)	Thread
	BSP
1 1/2 x 1 1/2	54-140-024
2 x 2	54-140-032
2 1/2 x 2 1/2	54-140-040
3 x 3	54-140-048
4 x 4	54-140-064


HYGIENIC



**RJT/CIP
SANITARY FITTINGS -
NUT & LINERS**


Size (Inches)	Thread, Material & Type		
	BSM Stainless Steel Hex Nut	BSM Stainless Steel Female Liner (RJT/CIP)	BSM Stainless Steel Male Liner (RJT)
1	55-000-016	55-020-016	55-030-016
1½	55-000-024	55-020-024	55-030-024
2	55-000-032	55-020-032	55-030-032
2½	55-000-040	55-020-040	55-030-040
3	55-000-048	55-020-048	55-030-048
4	55-000-064	55-020-064	55-030-064






**RJT/CIP
SANITARY FITTINGS -
SEALS & O-RINGS**

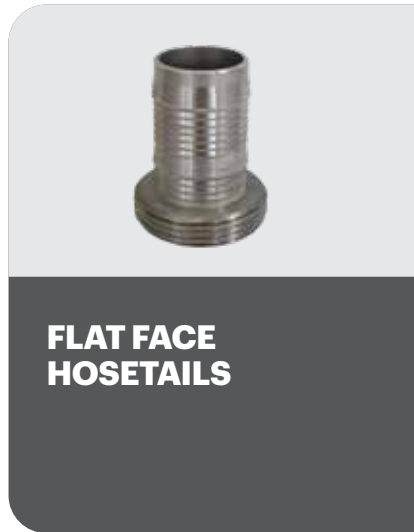
Size (Inches)	Material, Thread & Type
	EPDM BSM O-Ring (RJT)
1	55-050-016
1½	55-050-024
2	55-050-032
3	55-050-048
4	55-050-064



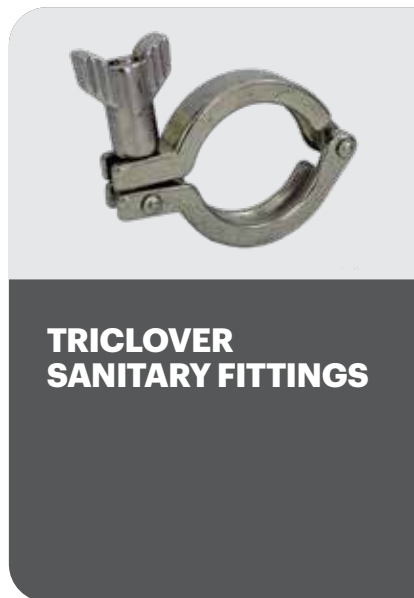
**FLAT FACE SANITARY
FITTINGS**

Size (Inches)	Thread, Material & Type			
	BSM Stainless Steel Hex Nut	BSM Stainless Steel Female Liner (Flat Face)	BSM Stainless Steel Male Liner (Flat Face/CIP)	EPDM (Flat Face/CIP) Seal
1	55-000-016	55-320-016	55-330-016	55-350-016
1½	55-000-024	55-320-024	55-330-024	55-350-024
2	55-000-032	55-320-032	55-330-032	55-350-032
2½	55-000-040	55-320-040	55-330-040	55-350-040
3	55-000-048	55-320-048	55-330-048	55-350-048
4	55-000-064	55-320-064	55-330-064	55-350-064

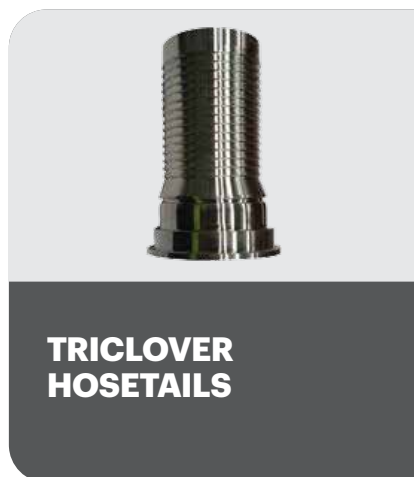




Size (Inches)	Thread & Type	
	BSM Female Nut with Hosetail (Flat Face)	BSM Male with Hosetail (Flat Face/CIP)
1	22-610-016-016	22-710-016-016
1½	22-610-024-024	22-710-024-024
2	22-610-032-032	22-710-032-032
2½	22-610-040-040	22-710-040-040
3	22-610-048-048	22-710-048-048
4	22-610-064-064	22-710-064-064

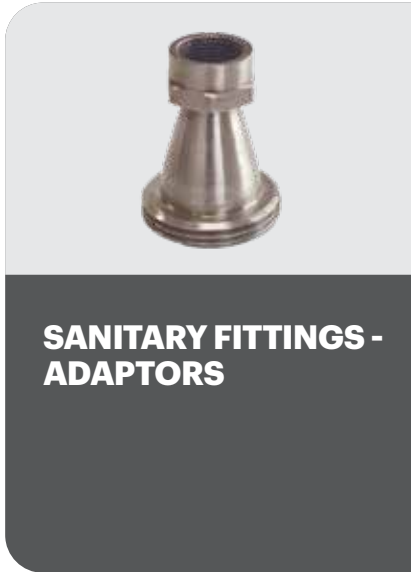


Size (Inches)	Material & Type			
	Stainless Steel Triclover Clamp	Stainless Steel Triclover Ferrule	Stainless Steel Triclover Cap	Stainless Steel Triclover EPDM Seal
1/2 - 3/4	55-900-016	55-920-008	55-940-016	55-950-008
		55-920-012		55-950-012
1 - 1½	55-900-024	55-920-016	55-940-024	55-950-016
		55-920-024		55-950-024
2	55-900-032	55-920-032	55-940-032	55-950-032
2½	55-900-040	55-920-040	55-940-040	55-950-040
3	55-900-048	55-920-048	55-940-048	55-950-048
4	55-900-064	55-920-064	55-940-064	55-950-064



Size (Inches)	Type & Material
	Triclover Stainless Steel Hosetail
1	22-760-016-016
1½	22-760-024-024
2	22-760-032-032
2½	22-760-040-040
3	22-760-048-048
4	22-760-064-064

HYGIENIC

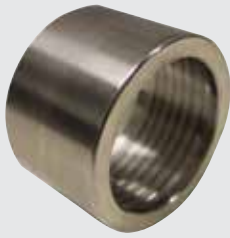


Size (Inches)	Material, Thread & Type			
	Stainless Steel Female BSM x Female BSP	Stainless Steel Female BSM x Male BSP	Stainless Steel Male BSM x Female BSP	Stainless Steel Male BSM x Male BSP
1	55-060-016-016	55-061-016-016	55-070-016-016	55-071-016-016
1½	55-060-024-024	55-061-024-024	55-070-024-024	55-071-024-024
2	55-060-032-032	55-061-032-032	55-070-032-032	55-071-032-032
2½	55-060-040-040	55-061-040-040	55-070-040-040	55-071-040-040
3	55-060-048-048	55-061-048-048	55-070-048-048	55-071-048-048
4	55-060-064-064	55-061-064-064	55-070-064-064	55-071-064-064



Size (Inches)	Thread & Type	
	BSM Female Nut with Hosetail (RJT/CIP)	BSM Male with Hosetail (RJT)
1	22-600-016-016	22-700-016-016
1½	22-600-024-024	22-700-024-024
2	22-600-032-032	22-700-032-032
2½	22-600-040-040	22-700-040-040
3	22-600-048-048	22-700-048-048
4	22-600-064-064	22-700-064-064





HYGIENIC CRIMP FERRULES

For use with sanitary crimp hoesetail variations.

Hose ID Size (Inches)	Hose OD size (mm)		Part Number
	From	To	
1	33.0	35.0	19-315-016-124
1	35.0	36.5	19-315-016-128
1	36.9	37.7	19-315-016-130
1	38.1	38.9	19-315-016-132
1	39.3	40.1	19-315-016-136
1	40.5	41.3	19-315-016-140
1½	48.4	49.6	19-315-024-160
1½	50.0	51.2	19-315-024-200
1½	51.6	52.8	19-315-024-204
1½	53.2	54.4	19-315-024-208
1½	55.0	56.5	19-315-024-212
2	62.7	63.9	19-315-032-232
2	64.3	65.5	19-315-032-236
2	65.9	67.1	19-315-032-240
2	69.0	70.5	19-315-032-250
2	71.4	73.6	19-315-032-256
2½	75.0	76.5	19-315-040-300
2½	76.1	78.1	19-315-040-304
2½	78.1	80.1	19-315-040-312
2½	81.1	83.1	19-315-040-316
3	88.0	91.0	19-315-048-336
3	91.7	92.9	19-315-048-340
3	92.1	93.3	19-315-048-344
3	93.6	94.9	19-315-048-348
3	95.2	96.5	19-315-048-352
3	96.8	98.0	19-315-048-356
3	98.4	99.6	19-315-048-360
3	100.4	101.6	19-315-048-400
4	117.5	118.7	19-315-064-444
4	119.0	120.3	19-315-064-448
4	120.6	121.9	19-315-064-452
4	122.2	123.5	19-315-064-456
4	123.8	125.0	19-315-064-460
4	128.9	130.2	19-315-064-508

BALL VALVES



STAINLESS STEEL BALL VALVES

Ideal for air, water and hot/cold corrosive fluids in harsh environments.

316 stainless steel 1-piece BSP:
Reduced bore valve

316 stainless steel 2-piece BSP:
Regular bore valve

316 stainless steel 3-piece BSP:
Full bore valve

Size (Inches)	Type & Threads		
	1-Piece BSP	2-Piece BSP	3-Piece BSP
1/4	25-400-004	25-410-004	25-420-004
3/8	25-400-006	25-410-006	25-420-006
1/2	25-400-008	25-410-008	25-420-008
3/4	25-400-012	25-410-012	25-420-012
1	25-400-016	25-410-016	25-420-016
1¼	25-400-020	25-410-020	25-420-020
1½	25-400-024	25-410-024	25-420-024
2	25-400-032	25-410-032	25-420-032
2½	-	25-410-040	25-420-040
3	-	25-410-048	25-420-048
4	-	25-410-064	25-420-064



- Max Working Temperature 150°C @ 75 psi
 - Working Pressure 1000 psi
- 316 Stainless Steel Three Piece NPT Thread Ball Valves available on request.

CAMLOCKS STANDARD



TYPE A

Male Camlock x Female BSPT

Size (Inches)	Material
	Stainless Steel BSP
1/2	20-200-A050
3/4	20-200-A075
1	20-200-A100
1¼	20-200-A125
1½	20-200-A150
1½ x 2	-
2	20-200-A200
2½	20-200-A250
3	20-200-A300
3 x 2	-
3 x 4	-
4	20-200-A400
4 x 3	-
5	-
6	20-200-A600
6 x 4	-
8*	-



TYPE B

Female Camlock x Male BSPT

Size (Inches)	Material
	Stainless Steel BSP
1/2	20-200-B050
3/4	20-200-B075
1	20-200-B100
1¼	20-200-B125
1½	20-200-B150
2	20-200-B200
2½	20-200-B250
3	20-200-B300
4	20-200-B400
4 x 3	-
5	-
6	20-200-B600
8*	-



TYPE C

Female Camlock x Hosetail

Size (Inches)	Material
	Stainless Steel BSP
1/2	20-200-C050
3/4	20-200-C075
1	20-200-C100
1¼	20-200-C125
1½	20-200-C150
2	20-200-C200
2 x 1½	-
2½	20-200-C250
3	20-200-C300
3 x 2	-
4	20-200-C400
5	-
6	20-200-C600
8*	-



TYPE D

Female Camlock x Female Thread

Size (Inches)	Material
	Stainless Steel BSP
1/2	20-200-D050
3/4	20-200-D075
1	20-200-D100
1¼	20-200-D125
1½	20-200-D150
2	20-200-D200
2 x 1½	-
2½	20-200-D250
3	20-200-D300
3 x 2	-
4	20-200-D400
4 x 3	-
5	-
6	20-200-D600
8*	-

CAMLOCKS STANDARD



TYPE E

Male Camlock x Hosetail

Size (Inches)	Material
	Stainless Steel BSP
1/2	20-200-E050
3/4	20-200-E075
1	20-200-E100
1¼	20-200-E125
1½	20-200-E150
2	20-200-E200
2 x 1½	-
2½	20-200-E250
3	20-200-E300
3 x 2	-
3 x 2½	-
4	20-200-E400
4 x 3	-
5	-
6	20-200-E600
8	-



TYPE F

Male Camlock x Male Thread

Size (Inches)	Material
	Stainless Steel BSP
1/2	20-200-F050
3/4	20-200-F075
1	20-200-F100
1¼	20-200-F125
1½	20-200-F150
2	20-200-F200
2 x 1½	-
2½	20-200-F250
3	20-200-F300
3 x 2	-
4	20-200-F400
4 x 3	-
5	-
6	20-200-F600
8*	-



TYPE DC

Camlock Dust Cap

Size (Inches)	Material
	Stainless Steel BSP
1/2	20-200-DC050
3/4	20-200-DC075
1	20-200-DC100
1¼	20-200-DC125
1½	20-200-DC150
2	20-200-DC200
2½	20-200-DC250
3	20-200-DC300
4	20-200-DC400
5	-
6	20-200-DC600
8*	-



TYPE DP

Camlock Dust Plug

Size (Inches)	Material
	Stainless Steel BSP
1/2	20-200-DP050
3/4	20-200-DP075
1	20-200-DP100
1¼	20-200-DP125
1½	20-200-DP150
2	20-200-DP200
2½	20-200-DP250
3	20-200-DP300
4	20-200-DP400
5	-
6	20-200-DP600
8*	-

WASHDOWN



GUNNA® WASHDOWN GUNS

Ideal for efficient washdown applications in dairies, factories, breweries, abattoirs, etc. Simple operation, allowing a straight jet or fan spray pattern. Water volume delivery can be easily adjusted by turning the screw at the back of the gun. Made from stainless steel and complete with white or blue jacket this gun will give you years of quality spraying.

Size (Inches)	Material & Thread
	316 Stainless Steel
1/2	28-050-012B
1/2	28-050-012W

FEATURES:

- Maximum working pressure 80 psi (620kPa)
- Maximum operating temperature 80°C
- Easy volume adjustment
- Spray or fan pattern operation
- Protective handle - OH&S approved
- Specially designed non-slip rubber grip (will not rotate on handle during usage)
- For water use only
- Includes 1/2 inch BSP female swivel attachment as standard

B=Blue W=White



Blue = Cold Red = Hot

ERGONOMIC LOW FLOW WASHDOWN GUNS (RB65)

A speciality gun for low pressure washdown work. Ideal for food, dairy and transit mixer applications.

Includes swivel (blue and red)

Size (Inches)	Material & Thread
	Brass BSP
1/2	28-061-012B
1/2	28-061-012R

FEATURES:

- 1/2" BSP female inlet
- 0-60° Nozzle Outlet
- 60 L/minute @ 350 psi
- Rated for use with water up to 90°C
- Red for hot water, blue for cold water operation
- Shock proof TPE Forprene cover
- Moulded plastic trigger

R = Red B = Blue

Compact RB35 also available. Part number 28-063-012B

METALLIC HOSE & EXPANSION JOINTS



**CUSTOM STAINLESS STEEL
HOSE ASSEMBLIES**



**RUBBER EXPANSION
BELLOWS**



**SEISMIC JOINTS BUILT TO
EARTHQUAKE SPECIFICATIONS**

HOSE REELS

- Partnering with some of the world's leading manufacturers and with one of the largest stocked range of reels in Australia, Motion has the solution for your hose storage needs.
- Stainless steel, painted steel plastic.
- Automatic retractable, manual, electric, pneumatic, and hydraulic motorised reels are available.
- Washdown use, CO2, lubrication, or event chemical use increase safety and reduce trips and falls from the hose on the ground.
- We can provide off-the-shelf or custom solutions.



HOSE MANAGEMENT PROGRAM

Motions Fluid Power Solutions Management Program, powered by Tesselink, utilises a small RFID microchip that provides hose details, certification information and maintenance alerts in real-time simply by scanning the chip, improving downtime, maintenance, and safety.

Motion Fluid Power Solutions Hose Management Program can include a range of the following features:

- Review of your current hose assembly use and needs
- Review that the hoses are fit for application
- Agree on maintenance program to suit your business
- All hoses whether existing under a maintenance program or new, are tested to Australian Standards following NAHAD guidelines, which can be on-site at your premises with our mobile test facility or off-site at our own maintenance facility
- Test number and Visual Tag
- Allocation of Tesselink RFID Chip
- Date of inspection and/or testing
- Retest date tracking if required
- Name of person performing the test

The Following is included in our test and record stage: Though the unique Tesselink integrated solution you can:

- View hose assembly history & records online 24/7
- Use RFID Chips and portable readers with Internet upload allowing you to immediately identify a hoses location, history of repairs, certifications etc
- Description of hose and its condition
- Test Pressure
- Working Pressure
- Result of test and/or inspection
- Receive automated e-mail alerts advising on a hose that's due for testing & inspection
- See test certificates instantly for each identified hose online





HOSE ASSEMBLY MANUFACTURING

Industry leading solutions in all aspects of specialist hose assembly manufacturing.

From Industrial rubber hose, Hydraulic hose, Hydraulic fittings, stainless steel hose to PVC and ultra-high pressure water jetting hose, Motion

Fluid Power Solutions can offer a solution for all applications.

We also offer a complete design and custom-built hose assembly service.



REPAIRS, TESTING & CERTIFICATION

Complete hose assembly testing and certification service to meet strict and specific industry requirements including:

- Hydrostatic Testing
- Vacuum Testing
- Destructive Testing
- Failure Analysis
- Hose Assembly Re-certification and Inspection



TESSALINK HOSE MANAGEMENT

Our Industry leading Tessalink on-line hose management system will help you maximise the life of your hose.

- Cycle expectancy of your hose assembly assets and associated connectors.
- We focus on preventative maintenance to reduce the risk of downtime and increase operator and site safety.



iMOTION

Delivering a world-class customer-first approach providing excellence and expertise in industrial products, solutions and services.

iMOTION
FLUID POWER SOLUTIONS

Specialists in Fluid Power Solutions tailored to keep your equipment moving.

iMOTION
ENGINEERING & SERVICES

Specialist design and engineering, manufacturing, repair and maintenance services.

Anytime.Anywhere.
Always Here.™



Find a location near you!

Scan the QR Code to find out more
or visit Motion.com.au