



**MOTION**  
FLUID POWER SOLUTIONS

# BULK & FUEL TANKER TRANSPORT

Industry Guide

Anytime. Anywhere.  
**Always Here.™**

**EXITFLEX®**  
Industrial and Hydraulic Hose & Fittings

**OPTIMA®**  
Don't opt for anything less.

# WHO WE ARE.

---

Motion delivers a world-class customer-first approach to everything we do. This has firmly established our business as the leader in the market, providing excellence and expertise in industrial products, solutions and services.

For more than 100 years we have been a feature in the Australian industrial landscape giving customers unmatched products and service through an integrated network of branches, workshops and service centres.

We have an ongoing commitment to invest in our people, facilities, IT and systems to ensure we can continue to offer a broad ranging and premium level of engineering design, servicing and turnkey projects to our customers across Australia.

We are committed and proud to keep our customers in motion, every day of the year.

***MOTION***

# CONTENTS

---

## **COMPOSITE HOSES** **4**

---

Fuel 4

---

## **RUBBER HOSES** **7**

---

Petrol & Oil 7

Hose Assemblies 10

Material Handling 11

Chemical 12

---

## **CAMLOCKS FITTINGS** **13**

---

Camlocks Standard 13

Camlocks Specialties 14

Composites 17

Camlocks Safety Bumps 19

Camlocks Spare Parts 21

---

## **CLAMPS FITTINGS** **22**

---

T-Bolts 22

Fuel 24

# FUEL

## CODE 1000 FUEL MASTER SD COMPOSITE HOSE

Is a flexible hose designed and manufactured specifically for the demands of the petro-chemical industry.



Part Number	ID	Nom. OD	Working Pressure @ 20°C		Bend Radius	Weight	Length	Cut Policy
	mm	mm	psi	kPa	mm	kg/m	metres	metres
16-100-025-***	25	32.0	100	700	60	0.80	20	1
16-100-038-***	38	48.0	100	700	75	1.30	20	1
16-100-051-***	51	63.0	150	1000	90	1.60	20	1
16-100-063-***	63	75.0	100	700	100	2.40	20	1
16-100-076-***	76	90.0	150	1000	125	2.80	20	1
16-100-102-***	102	112.0	150	1000	200	4.10	20	1

**REINFORCEMENT:**

Internal - Galvanised steel  
External - Galvanised steel

**INNER TUBE:** High strength polypropylene films and fabrics

**COVER:** Green PVC coated polyester fabric with yellow stripe

**TEMPERATURE:** -30°C TO +80°C

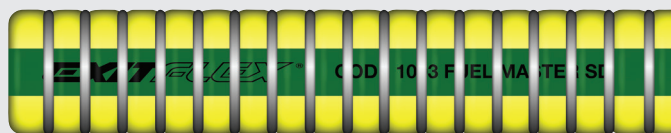
**STANDARDS:** AS 2683 - 2000 Type 1 / Kind 1 / Grade 1, 2 and 3

**ADVANTAGES:**

- Weather and ozone resistant
- 100% antistatic - electrically continuous
- Conforms to Australian standards

## CODE 1003 FUEL MASTER LD COMPOSITE HOSE

Is a light weight and flexible hose designed and manufactured specifically for the demands of the petro-chemical industry.



Part Number	ID	Nom. OD	Working Pressure @ 20°C		Bend Radius	Weight	Length	Cut Policy
	mm	mm	psi	kPa	mm	kg/m	metres	metres
16-103-051-***	51	63.0	100	700	90	1.25	20	1
16-103-063-***	63	75.0	100	700	100	1.75	20	1
16-103-076-***	76	90.0	100	700	125	2.00	20	1
16-103-102-***	102	112.0	100	700	200	2.50	20	1

**REINFORCEMENT:**

Internal - Aluminium  
External - Galvanised steel

**INNER TUBE:** High strength polypropylene films and fabrics

**COVER:** Yellow PVC coated polyester fabric with green stripe

**TEMPERATURE:** -30°C TO +80°C

**STANDARDS:** AS 2683 - 2000 Type 1 / Kind 1 / Grade 1, 2 and 3

**ADVANTAGES:**

- Weather and ozone resistant
- 100% antistatic - electrically continuous
- Conforms to Australian standards
- Aluminium internal helix making it lighter and more flexible

### CODE VRH FUEL MASTER VAPOUR LD COMPOSITE HOSE

Is a light weight and flexible vapour recovery hose designed and manufactured specifically for the demands of the petro-chemical industry.



Part Number	ID	Nom. OD	Working Pressure @ 20°C		Bend Radius	Weight	Length	Cut Policy
	mm	mm	psi	kPa	mm	kg/m	metres	metres
16-105-102-***	102	112.0	72	500	200	4.10	20	1

**REINFORCEMENT:**

Internal - Galvanised steel  
External - Galvanised steel

**INNER TUBE:** High strength polypropylene films and fabrics

**COVER:** Black PVC coated polyester fabric with yellow stripe

**TEMPERATURE:** -30°C TO +80°C

**STANDARDS:** AS2683-2000 Type 1 / Kind 1 / Grade 3

**ADVANTAGES:**

- Weather and ozone resistant
- 100% antistatic - electrically continuous
- Conforms to Australian standards
- Light weight and flexible

### CODE 700 AVIATION FUEL MASTER SG COMPOSITE HOSE

Is a flexible hose designed and manufactured specifically for the demands of the aviation industry.



Part Number	ID	Nom. OD	Working Pressure @ 20°C		Bend Radius	Weight	Length	Cut Policy
	mm	mm	psi	kPa	mm	kg/m	metres	metres
16-200-051-***	51	63.0	100	700	90	1.25	20	1
16-200-063-***	63	75.0	100	700	100	1.75	20	1
16-200-076-***	76	90.0	100	700	125	2.00	20	1
16-200-102-***	102	112.0	100	700	200	2.50	20	1

**REINFORCEMENT:**

Internal - Stainless steel  
External - Galvanised steel

**INNER TUBE:** High strength polypropylene films and fabrics

**COVER:** Black PVC coated polyester fabric with green stripe

**TEMPERATURE:** -30°C TO +80°C

**STANDARDS:** AS 2683 - 2000 Type 1 / Kind 1 / Grade 1, 2 and 3

**ADVANTAGES:**

- Weather and ozone resistant
- 100% antistatic - electrically continuous
- Conforms to Australian standards
- Specially designed for the transfer of aviation fuel
- Excellent flexibility

# FUEL

## CODE 901 OIL MASTER HD COMPOSITE HOSE

Is a flexible hose designed and manufactured specifically for the heavy duty demands of the petro-chemical industry. Is suitable for use in heavy duty discharge of road and rail tankers, docks and onshore applications.



Part Number	ID	Nom. OD	Working Pressure @ 20°C		Bend Radius	Weight	Length	Cut Policy
	mm	mm	psi	kPa	mm	kg/m	metres	metres
16-901-025-***	25	35.0	200	1400	100	0.90	20	1
16-901-038-***	38	50.0	200	1400	140	1.50	20	1
16-901-051-***	51	65.0	200	1400	170	1.90	20	1
16-901-063-***	63	76.0	150	1000	200	3.00	20	1
16-901-076-***	76	90.0	150	1000	270	3.40	20	1
16-901-102-***	102	120.0	150	1000	340	6.50	20	1

**REINFORCEMENT:**

Internal - Galvanised steel  
External - Galvanised steel

**INNER TUBE:** High strength polypropylene films and fabrics

**COVER:** Black PVC coated polyester fabric

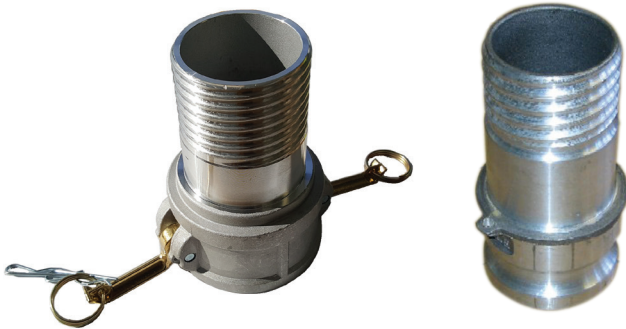
**TEMPERATURE:** -30°C TO +80°C

**STANDARDS:**

AS 2683 - 2000 Type 1 / Kind 1 / Grade 1, 2 and 3  
AS 2117 - 1991 Type 2 / Grade 1 and 2 / Electrically Continuous

**ADVANTAGES:**

- Weather and ozone resistant
- 100% antistatic - electrically continuous
- Conforms to Australian standards
- Excellent flexibility



**Scroll Tail Composite Camlocks also available on request from your local Motion branch.**

## PETROL & OIL

### OPTIMA® EF442 DOMESTIC FUEL REELING HOSE

Has been developed for the transfer and delivery of fuel, oil and other hydrocarbon based products, ideally suited for the use in heavy duty reeling applications. Manufactured from conductive synthetic rubber compounds and reinforced with high tensile textile braid reducing kinking and twisting when reeling.



Part Number	ID	Nom. OD	Working Pressure		Bend Radius	Weight	Length	Cut Policy
	mm	mm	psi	bar	mm	kg/m	metres	metres
10-480-025-***	25.4	37.0	240	16	205	0.84	60	0
10-480-032-***	31.8	44.0	240	16	255	1.07	60	0
10-480-038-***	38.1	51.0	240	16	305	1.34	20 / 60	0
10-480-051-***	50.8	67.0	240	16	405	2.21	60	0

**REINFORCEMENT:** High tensile textile braid

**INNER TUBE:** Black smooth conductive NBR blend

**COVER:** Black wrapped conductive NBR blend

**TEMPERATURE:** -30°C TO +70°C

**STANDARDS:** EN1360:2013

**SAFETY FACTOR:** 3:1

**ADVANTAGES:**

- Excellent resistance to abrasive, ozone, hydrocarbon and flame resistant
- Long lengths for hose reeling applications

### AVIO GLOBAL C AIRCRAFT REFUELLING HOSE

Has been designed specifically for the ground refuelling of aircrafts. The compound can convey petroleum products and jet A1 fuel with an aromatic content of up to 50% and can be rolled onto reels for ease of use.



Part Number	ID	Nom. OD	Working Pressure @ 20°C		Bend Radius	Weight	Length	Cut Policy
	mm	mm	psi	bar	mm	kg/m	metres	metres
10-490-025-***	25.4	38.0	300	20	300	0.73	30 / 60	0
10-490-032-***	31.8	45.0	300	20	375	0.89	30 / 60	0
10-490-038-***	38.1	52.0	300	20	450	1.07	30 / 60	0
10-490-051-***	50.8	67.0	300	20	550	1.70	30 / 60	0

**REINFORCEMENT:** High strength synthetic cord

**INNER TUBE:** Black smooth NBR blend

**COVER:** Black smooth anti-static synthetic blend

**TEMPERATURE:** -25°C TO +70°C

**SAFETY FACTOR:** 4:1

**STANDARDS:** ISO 1825, API 1529:05, AS 2683, VG 95955, NFPA 407

**ADVANTAGES:**

- Can convey petroleum products and jet A1 fuel with aromatic content up to 50%
- Excellent resistance to ageing, atmospheric conditions and ozone
- Antistatic synthetic rubber

## PETROL & OIL

### EXITFLEX® EF611 PETROL SUCTION & DELIVERY HOSE

Is suitable for the safe transfer of virtually all petroleum based products, ideally suited for use as transfer lines for diesel, ethanol, gasolines, oil and petroleum based products with an aromatic content of up to 50%.



Part Number	ID	Nom. OD	Working Pressure		Vacuum Rating	Bend Radius	Weight	Length	Cut Policy
	mm	mm	psi	bar	in/hg	mm	kg/m	metres	metres
10-500-019-***	19.1	29.0	150	10	26.58	125	0.60	20 / 60	5
10-500-022-***	22.4*	31.0	150	10	26.58	100	0.56	20	5
10-500-025-***	25.4	35.0	150	10	26.58	150	0.74	20 / 60	5
10-500-032-***	31.8	42.0	150	10	26.58	200	0.90	20 / 60	5
10-500-035-***	35.1*	45.0	150	10	26.58	155	0.97	20	5
10-500-038-***	38.1**	48.0	150	10	26.58	220	1.10	20 / 60	5
10-500-044-***	44.5	55.0	150	10	26.58	230	1.46	20	5
10-500-051-***	50.8**	61.0	150	10	26.58	240	1.40	20 / 60	5
10-500-057-***	57.2*	69.0	150	10	26.58	255	1.87	20	5
10-500-063-***	63.5**	75.0	150	10	26.58	355	2.10	20 / 60	5
10-500-076-***	76.2**	88.0	150	10	26.58	460	2.70	20 / 60	5
10-500-088-***	88.9**	104.0	150	10	26.58	550	3.10	20	5
10-500-102-***	101.6**	116.0	150	10	26.58	610	3.80	20 / 60	5
10-500-127-***	127.0	145.0	150	10	26.58	700	6.00	20	5
10-500-152-***	152.4	170.0	150	10	23.62	800	7.40	20	5
10-500-203-***	203.2	225.0	150	10	20.67	1000	12.20	6	0

**REINFORCEMENT:** High tensile textile cord with steel wire helix

**INNER TUBE:** Black smooth NBR blend

**COVER:** Black wrapped synthetic blend

**TEMPERATURE:**

- 20°C TO +80°C

\* size - 20°C TO +70°C"

**SAFETY FACTOR:** 3:1

**STANDARDS:** \*\* Meets/exceeds SAE100 R4

**NOTES:** \* Size - Optima® branded

**ADVANTAGES:**

- Excellent resistance to ageing, atmospheric conditions and ozone
- Specific compound to resist petroleum products with aromatic content to 50%
- Outer cover is flame resistant anti-static (FRAS)

### OPTIMA® EF611C XTRAFLEX PETROL SUCTION & DELIVERY HOSE

Is suitable for the safe transfer of virtually all petroleum based products. The corrugated outer cover gives the hose a lower drag coefficient making it ideally suited for use as tank drop hoses and transfer lines for diesel, ethanol, gasolines, oil and petroleum based products with an aromatic content of up to 50%.



Part Number	ID	Nom. OD	Working Pressure		Vacuum Rating	Bend Radius	Weight	Length	Cut Policy
	mm	mm	psi	bar	in/hg	mm	kg/m	metres	metres
10-510-019-***	19.1	30.5	250	17	26.58	65	0.70	30 / 60	5
10-510-025-***	25.4	37.0	250	17	26.58	90	0.90	30 / 60	5
10-510-032-***	31.8	45.0	250	17	26.58	110	1.27	30 / 60	5
10-510-038-***	38.1	51.0	250	17	26.58	135	1.44	30 / 60	5
10-510-044-***	44.5	58.0	250	17	26.58	155	1.81	30	5
10-510-051-***	50.8	65.0	250	17	26.58	180	2.13	30 / 60	5
10-510-063-***	63.5	79.0	200	14	26.58	220	2.75	30	5
10-510-076-***	76.2	91.0	200	14	26.58	265	3.31	30 / 60	5
10-510-088-***	88.9	104.0	150	10	26.58	310	3.82	30	5
10-510-102-***	101.6	118.0	150	10	26.58	355	4.82	30	5
10-510-152-***	152.4	171.0	150	10	26.58	685	8.38	30	5

**REINFORCEMENT:** High tensile textile cord with double steel wire helix

**INNER TUBE:** Black smooth NBR

**COVER:** Black wrapped corrugated CR

**TEMPERATURE:** -20°C TO +80°C

**SAFETY FACTOR:** 4:1

**STANDARDS:** AS 2683 - T1 / K1 / G2

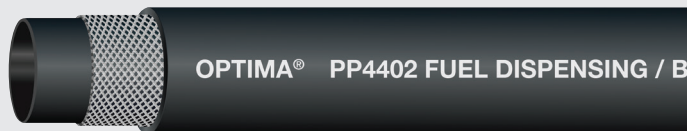
**ADVANTAGES:**

- Excellent resistance to ageing, atmospheric conditions and ozone
- Outer cover is flame resistant anti-static (FRAS)
- Specific compound to resist petroleum products with aromatic content to 50%
- Light weight and ultra flexible
- Higher working pressures than standard petrol / oil suction and delivery hoses
- Convuluted outer cover gives the hose a lower drag coefficient

## PETROL & OIL

### OPTIMA® PP4402 FUEL DISPENSING HOSE

Is designed for the transfer and delivery of fuel in petrol dispensing applications.



Part Number	ID	Nom. OD	Working Pressure		Bend Radius	Weight	Length	Cut Policy
	mm	mm	psi	bar	mm	kg/m	metres	metres
08-460-016-***	15.9	26.0	175	12.5	80	0.45	Random	1
08-460-025-***	25.4	36.0	175	12.5	150	0.80	Random	1

**REINFORCEMENT:** High tensile double textile braid

**INNER TUBE:** Black smooth NBR

**COVER:** Black smooth NBR blend

**TEMPERATURE:** -30°C TO +55°C

**SAFETY FACTOR:**

4:1 as per AS 2683

3:1 as per EN 1360

**STANDARDS:**

AS 2683 T4 / G2 / K1 and 2

EN 1360 Type 1

**ADVANTAGES:**

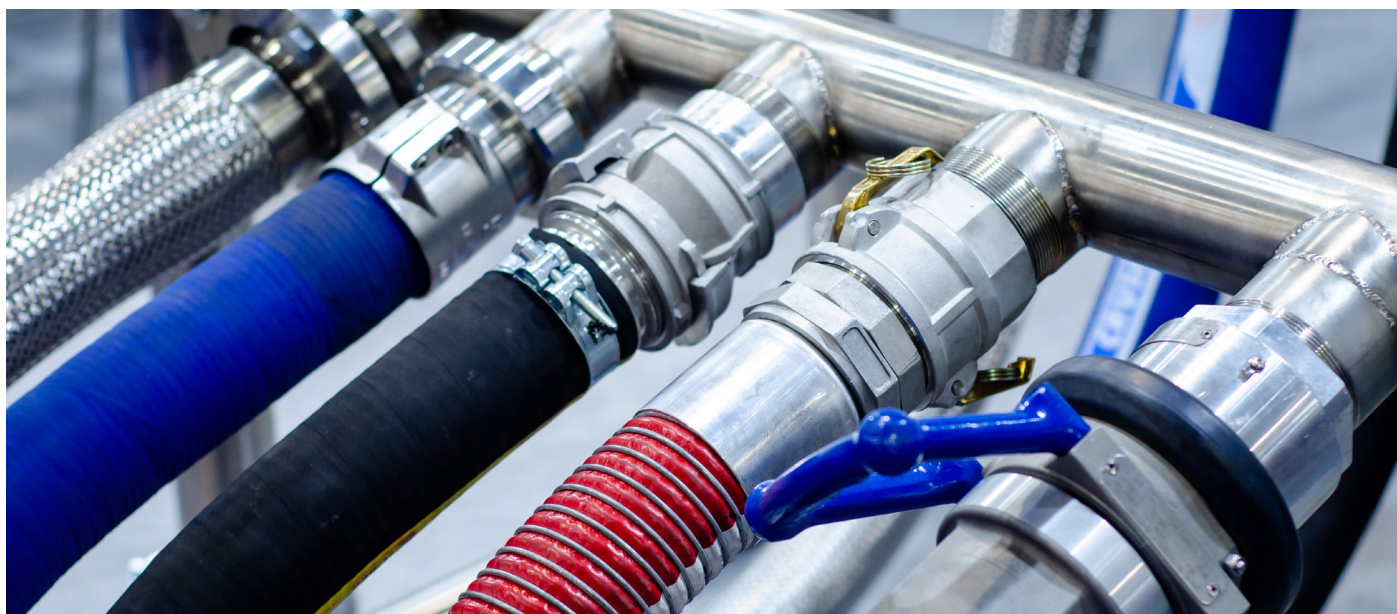
- Excellent resistance to ageing, atmospheric conditions and ozone
- Abrasion and cut resistant cover
- Excellent kink resistance

## HOSE ASSEMBLIES

Motion Fluid Power Solutions has hose assembly and testing facilities across its vast branch network in Asia Pacific. We boast industry-leading equipment and state-of-the-art assembly centres with knowledgeable and trained hose assembly specialists.

Our speciality is the supply of fitted hose assemblies that can be tagged, tested and implanted with an RFID Microchip to track the

hose through its life cycle. All of our hose assemblies are built to the relevant NAHAD or Australian Standard, to ensure total compliance to every state legislation. If required, any hose assembly built at Motion can be subjected to either vacuum or suction testing. All testing is carried out in strict accordance with Australian Standard AS 1180 7J & NAHAD Standards



# MATERIAL HANDLING

## EXITFLEX® EF625 HOT AIR SUCTION & DELIVERY HOSE

Is a heavy duty hose designed to be the air line from compressor to tanks on bulk transport vehicles, for the transfer of dry bulk materials.



Part Number	ID	Nom. OD	Working Pressure		Vacuum Rating	Bend Radius	Weight	Length	Cut Policy
	mm	mm	psi	bar	in/hg	mm	kg/m	metres	metres
10-361-076-***	76.2	90.0	150	10	26.58	-	2.80	20	1
10-361-102-***	101.6	117.0	150	10	26.58	-	3.60	20	1

**REINFORCEMENT:** High tensile textile braid with wire helix

**INNER TUBE:** Black smooth EPDM

**COVER:** Blue smooth EPDM

**TEMPERATURE:** -40°C TO +180°C

**SAFETY FACTOR:** 3:1

**ADVANTAGES:**

- Suitable for all types of road tankers
- Can be supplied fitted with swaged assemblies
- Highly visible blue, weather resistant and EPDM outer cover
- Perfect for heavy duty applications

## EXITFLEX® EF626 DRY POWDER DELIVERY HOSE

Is designed for pneumatic transfer of bulk abrasive products, predominately the transfer of dry cement, from road and rail tankers to storage bins.



Part Number	ID	Nom. OD	Working Pressure		Vacuum Rating	Bend Radius	Weight	Length	Cut Policy
	mm	mm	psi	bar	in/hg	mm	kg/m	metres	metres
10-885-076A-***	76.2	92.0	75	5	-	3.24	20	0	1
10-855-102A-***	101.6	118.0	75	5	-	3.76	20	0	1

**REINFORCEMENT:** High tensile textile cords

**INNER TUBE:** Black smooth NR/PBR blend

**COVER:** Black wrapped NBR blend

**TEMPERATURE:** -20°C TO +80°C

**SAFETY FACTOR:** 3:1

**ADVANTAGES:**

- Light weight and flexible
- Excellent resistance to abrasion and ozone
- Anti-static

# CHEMICAL

## EXITFLEX® EF645 UHMPWE CHEMICAL SUCTION & DELIVERY (FDA)

Has been designed for the transfer of a variety of current industrial chemicals used today. For use in pressure, gravity flow and/or suction service.



Part Number	ID	Nom. OD	Working Pressure		Vacuum Rating	Bend Radius	Weight	Length	Cut Policy
	mm	mm	psi	bar	in/hg	mm	kg/m	metres	metres
10-980-019-***	19.1	29.0	250	17	26.58	125	0.65	20	1
10-980-025-***	25.4	37.0	250	17	26.58	150	0.85	20	1
10-980-032-***	31.8	43.0	250	17	26.58	250	1.02	20	1
10-980-038-***	38.1	49.0	250	17	26.58	300	1.19	20	1
10-980-051-***	50.8	64.0	250	17	26.58	550	1.71	20	1
10-980-063-***	63.5	77.0	250	17	26.58	450	2.03	20	1
10-980-076-***	76.2	92.0	250	17	26.58	560	3.07	20	1
10-980-102-***	101.6	117.0	250	17	26.58	700	4.04	20	1

**REINFORCEMENT:** High tensile textile braid with steel wire helix

**INNER TUBE:** White UHMPWE/FDA

**COVER:** Blue corrugated EPDM

**TEMPERATURE:** -40°C TO +110°C

**STANDARDS:** FDA Approved

**SAFETY FACTOR:** 3:1

**ADVANTAGES:**

- Corrugated highly flexible hose
- Weather and abrasion resistant cover
- Can be used with wide variety of chemicals
- FDA tube

# CAMLOCKS STANDARD

## CAMLOCK INFORMATION:

Motion's standard range of Cam and Groove (Camlock) couplings and adaptors are manufactured to interchange with all products produced to the NATO Federal Military standard A-A-59326 which replaces US Military specification MIL-27487.

Except for sizes 1/2" (15mm), 5" (127mm) and 8" (200mm), the A-A-59326 Federal Military specification does not apply to these sizes due to the presence of two versions available in today's market.

Australian standard and API (American Petroleum Institute) Cam and Groove (Camlock) couplings and adaptors do not interchange with the NATO standard Cam and Groove (Camlock) couplings and adaptor, only with themselves.

**N.B: Cam and Groove (Camlock) couplings and adaptors must never be used for steam or compressed air applications.**

### CAMLOCK WORKING PRESSURES

Size (mm)	Material & Working Pressure		
	Aluminium & Brass	Stainless Steel	Polypropylene & Nyglass
15	125 psi	150 psi	125 psi
20-50	150 psi	250 psi	125 psi
65	150 psi	225 psi	100 psi
75	150 psi	200 psi	75 psi
100	150 psi	200 psi	75 psi
125 & 150	75 psi	100 psi	N/A

Pressures to be used as a guide only. Please consult your local Powell Industrial branch where critical applications are concerned. Working pressures listed are at ambient temperature (20°C) with standard Buna-N seal installed.

### CAMLOCK MATERIAL DESCRIPTIONS

Material	Typical Application	Description
ALUMINIUM	General use / Agricultural / Industrial	Manufactured using the die-casting method. This is the most common / economical of the aluminium range used for general air / water applications.
BRASS	Offshore / Coal Mining / Fire Brigade	Manufactured using die-cast method.
POLYPROPYLENE (BLACK)	Agricultural Spraying Equipment / Chemical Industry	Used extensively throughout the chemical and agricultural sector.
NYGLASS (YELLOW)	Agricultural Spraying Equipment / Chemical Industry	Glass filled nylon. Alternative to Polypropylene.
STAINLESS STEEL 316	Food Industry / Offshore / Chemical Industry	Sand cast stainless steel. Fully weldable.

## CAMLOCKS SPECIALTIES



### TYPE LA

Male Camlock with Flange

Size (Inches)	Aluminium Heavy Duty		Stainless Steel
	Drilled Table D/E	Undrilled	Drilled Table D/E
2	20-000-LAD200	20-000-LAU200	20-200-LAD200
2½	20-000-LAD250	-	-
3	20-000-LAD300	20-000-LAU300	20-200-LAD300
4	20-000-LAD400	20-000-LAU400	20-200-LAD400
6	20-000-LAD600	20-000-LAU600	20-200-LAD600

Other sizes available to order



### HYDRANT ADAPTOR CAMLOCK

Male Camlock x Female BSP

Size (Inches)	Material
	Aluminium
2 x 2	20-000-HA200200
3 x 2	20-000-HA300200
3 x 3	20-000-HA300300



### MALE X WELD ON CAMLOCKS - TYPE AW

Male Camlock x Weldon

Size (Inches)	Material
	Stainless Steel NATO
2	20-200-AW200
2½	20-200-AW250
3	20-200-AW300
4	20-200-AW400

**AMERICAN PETROLEUM INSTITUTE CAMLOCKS**



API ADAPTOR



API dust cap



API ADAPTOR GASKET

Size (Inches)	Type & Material	Part Number
6 x 3	API ADAPTOR - Aluminium	20-180-CA600300
6 x 4	API ADAPTOR - Aluminium	20-180-CA600400
6	API DUST CAP - Aluminium	20-180-DC600
6	API ADAPTOR GASKET	20-180-G600



**IBC TANK ADAPTORS POLY CAMLOCKS**

Size (Inches)	Type	Part Number
1	A - Buttress Thread	20-520-A100
1½	A - Buttress Thread	20-520-A150
2	A - Buttress Thread	20-520-A200
2	A -Buttress Thread Short	20-520-AS200

Threaded IBC fittings available



## INDUSTRIAL CRIMP FERRULES

304 Stainless steel for use with camlocks, tails or industrial crimp tails.

Can't find the size you require?  
Please contact your local Motion branch for assistance.

Part Number	Size	
	Suit Hose ID (Inches)	Ferrule - Internal ID (mm)
19-310-05100	1/2	25.0
19-310-08104	3/4	31.8
19-310-08106	3/4	34.9
19-310-10108	1	38.1
19-310-10109	1	39.7
19-310-13113	1¼	46.0
19-310-15200	1½	50.8
19-310-15201	1½	52.4
19-310-15204	1½	57.2
19-310-20208	2	63.5
19-310-20210	2	66.7
19-310-20211	2	68.3
19-310-25302	2½	79.4
19-310-30311	3	93.7
19-310-30313	3	96.8
19-310-40411	4	119.1
19-310-40413	4	127.0
19-310-40415	4	125.4
19-310-60612	6	171.5
19-310-60614	6	174.6
19-310-60702	6	182.8

Other sizes available on request

# COMPOSITE



**COMPOSITE HOSE CRIMP FERRULES & SEALS**

Size (Inches)	Material & Type			
	Aluminium Ferrule	Stainless Steel Ferrule	Buna Crimp Seal	Viton Crimp Seal
1	-	19-002-016	19-010-016	19-011-016
1½	19-000-024	19-002-024	19-010-024	19-011-024
2	19-000-032	19-002-032	19-010-032	19-011-032
2½	19-000-040	19-002-040	19-010-040	19-011-040
3	19-000-048	19-002-048	19-010-048	19-011-048
4	19-000-064	19-002-064	19-010-064	19-011-064



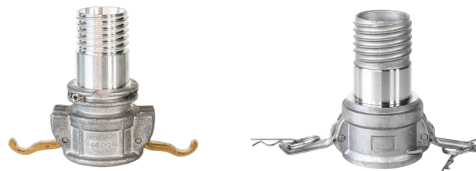
# SCROLL TRAILS

For use with code hoses, crimp shell and seals.



**SCROLL TAIL COMPOSITE CAMLOCKS - TYPE C**  
Female Camlock x Hosetail

Size (Inches)	Material & Type	
	WAM Style Heavy Duty Aluminium Static Lock	Optima® Stainless Steel
1	20-131-C100	20-230-C100
1½	20-131-C150	20-230-C150
2	20-131-C200	20-230-C200
2½	20-131-C250	20-230-C250
3	20-131-C300	20-230-C300
4	20-131-C400	20-230-C400



For use with ferrules and seals. Contact your local Powell Industrial branch for correct parts to suit your specific application.



**SCROLL TAIL COMPOSITE CAMLOCKS - VAPOUR RECOVERY**

Size (Inches)	Material & Type
	Optima® Aluminium
1	20-131-VRC400



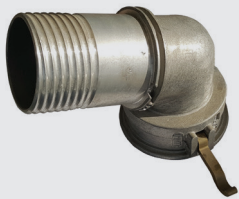
**SCROLL TAIL  
COMPOSITE  
CAMLOCKS - TYPE E**

Male Camlock x Hosetail

Size (Inches)	Material & Type	
	WAM Style Heavy Duty Aluminium Static Lock	Optima® Stainless Steel
1	20-131-E100	20-230-E100
1½	20-131-E150	20-230-E150
2	20-131-E200	20-230-E200
2½	20-131-E250	20-230-E250
3	20-131-E300	20-230-E300
4	20-131-E400	20-230-E400



For use with Ferrules and Seals.  
Contact your local Motion Branch  
for correct parts to suit your  
specific application.



**SCROLL TAIL  
COMPOSITE  
CAMLOCKS - TYPE BC  
(BENT C 68°)**

Female Camlock x Hosetail

Size (Inches)	Material & Type	
	WAM Style Heavy Duty Aluminium Static Lock	
2 x 68°	20-131-BC68200	
2½ x 68°	20-131-BC68250	
3 x 68°	20-131-BC68300	
4 x 68°	20-131-BC68400	



**SCROLL TAIL  
COMPOSITE  
CAMLOCKS - TYPE TB**

Male Thread x Hosetail

TB = BSPT

TW = Weld on tail

Size (Inches)	Material		
	Aluminium	Stainless Steel	Stainless Steel TW (Weld On)
1	20-131-TB100	20-230-TB100	-
1½	20-131-TB150	20-230-TB150	-
2	20-131-TB200	20-230-TB200	20-230-TW200
2½	20-131-TB250	20-230-TB250	-
3	20-131-TB300	20-230-TB300	20-230-TW300
4	20-131-TB400	20-230-TB400	20-230-TW400



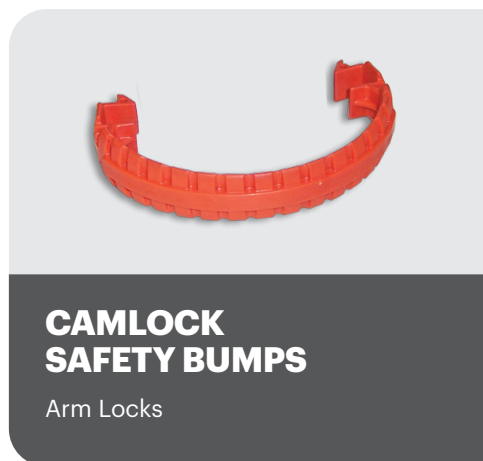
# CAMLOCKS SAFETY BUMPS



Size (Inches)	Colour & Industry Type	
	Blue Poly - Industrial	
2	20-800-DC200	
3	20-800-DC300	
4	20-800-DC400	



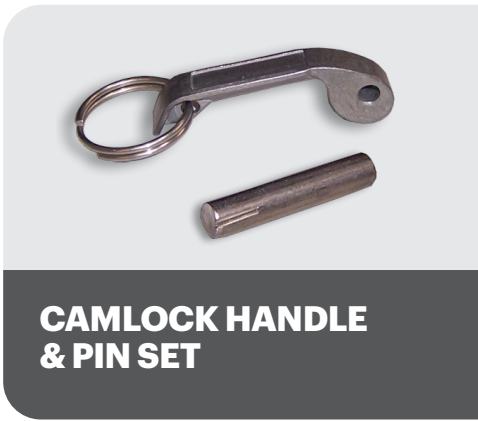
Size (Inches)	Colour & Industry Type	
	Blue Poly - Industrial	
2	20-800-DP200	
3	20-800-DP300	
4	20-800-DP400	



Size (Inches)	Blue	Red	Orange
2	20-803-200	-	-
3	-	20-803-300	-
4	-	-	20-803-400



# CAMLOCKS SPARE PARTS



Size (Inches)	Material & Type	
	Brass	Stainless Steel
1/2 > 3/4	-	20-955-075S
1	20-950-100S	20-955-100S
1¼ > 2½	20-950-250S	20-955-250S
3 > 5	20-950-400S	20-955-400S
6	20-950-600S	20-955-600S



Size (Inches)	Material & Temperature			
	BUNA 120°C	EPDM 150°C	Viton® 200°C	Teflon Encapsulated 232°C
1/2	20-900-050	20-905-050	20-910-050	-
3/4	20-900-075	20-905-075	20-910-075	20-920-075
1	20-900-100	20-905-100	20-910-100	20-920-100
1¼	20-900-125	20-905-125	20-910-125	20-920-125
1½	20-900-150	20-905-150	20-910-150	20-920-150
2	20-900-200	20-905-200	20-910-200	20-920-200
2½	20-900-250	20-905-250	20-910-250	20-920-250
3	20-900-300	20-905-300	20-910-300	20-920-300
4	20-900-400	20-905-400	20-910-400	20-920-400
5	20-900-500	-	-	-
6	20-900-600	-	20-910-600	-
8	20-900-800	-	-	-



Size (Inches)	Material	
	Stainless Steel	
1¼ to 2½	20-953-250S	
3 to 4	20-953-400S	



Size (Inches)	Material & Type	
	Stainless Steel Chain with Rings	Safety Pin
Universal	-	20-972-000
3mm Chain x 300 mm long	20-975-330	-



# T-BOLTS



## PERFORMER® T-BOLT CLAMPS

For heavy duty applications where large tightening forces are required. Rolled edges prevent hose damage. A bolt is used for tightening, not a nut - which ensures full travel when using a socket.

Extra solid construction with the highest grade materials and 3 welds per band on large sizes. Solid trunnions with Hex Head Bolt and superior sealing - tighter seals at lower bolt torques.

Independently tested.

### W1 Zinc Plated Steel:

- German engineering technology
- Genuine reusable construction
- Automatic spot welded
- Electroplated Zinc
- Solid trunnion nut and bolt assembly
- Excellent clamping security

### W4 Full Stainless Steel:

Full Stainless Steel Band with Stainless Steel Hex Head Bolt.

NB: All clamps sold separately or in colour coded boxes of five according to material grade.

Clamping Range (mm)	Material	
	W1 Zinc Plated Steel	W4 Full Stainless Steel
17-19	42-101-019	42-400-019
20-22	42-101-022	42-400-022
23-25	42-101-025	42-400-025
26-28	42-101-028	42-400-028
29-31	42-101-031	42-400-031
30-33	42-101-033	42-400-033
32-35	42-101-035	42-400-035
34-37	42-101-037	42-400-037
36-39	42-101-039	42-400-039
38-41	42-101-041	42-400-041
40-43	42-101-043	42-400-043
42-45	42-101-045	42-400-045
44-47	42-101-047	42-400-047
46-49	-	42-400-049
48-51	42-101-051	42-400-051
50-53	42-101-053	42-400-053
52-55	42-101-055	42-400-055
54-57	42-101-057	42-400-057
56-59	42-101-059	42-400-059
58-61	42-101-061	42-400-061
60-63	42-101-063	42-400-063
62-65	42-101-065	42-400-065
64-67	42-101-067	42-400-067
66-70	42-101-070	42-400-070
68-73	42-101-073	42-400-073
71-76	42-101-076	42-400-076
74-79	42-101-079	42-400-079
77-82	42-101-083	42-400-082
80-85	42-101-085	42-400-085
83-88	42-101-089	42-400-088
86-91	42-101-091	42-400-091
89-94	-	42-400-094
92-97	42-101-097	42-400-097
95-100	-	42-400-100
98-103	42-101-103	42-400-103
101-107	42-101-107	42-400-107
104-112	42-101-112	42-400-112
108-116	42-101-116	42-400-116
113-121	42-101-121	42-400-121
117-125	-	42-400-125
122-130	42-101-130	42-400-130
131-139	42-101-139	42-400-139
140-148	42-101-148	42-400-148



**PERFORMER®  
T-BOLT CLAMPS**

Continued

Clamping Range (mm)	Material	
	W1 Zinc Plated Steel	W4 Full Stainless Steel
149-161	42-101-161	42-400-161
162-174	42-101-174	42-400-174
175-187	42-101-187	42-400-187
188-200	42-101-200	42-400-200
201-213	42-101-213	42-400-213
214-226	42-101-226	42-400-226
227-239	42-101-239	42-400-239
240-252	42-101-252	42-400-252
248-260	42-101-260	42-400-260
253-265	-	42-400-265
266-278	-	42-400-278
279-291	-	42-400-291
292-304	-	42-400-304
304-317	-	42-400-317
317-330	-	42-400-330

# FUEL

## ALUMINIUM TRIGGER NOZZLE - DIESEL FUEL TYPE

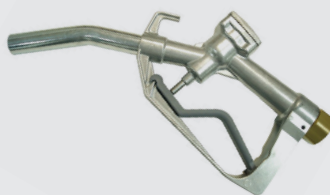
Manual



Size (Inches)	Material & Thread
1	Aluminium BSP Female 28-100-016

## ALUMINIUM TRIGGER NOZZLE - UNLEADED FUEL TYPE

Manual



Size (Inches)	Material & Thread
1	Aluminium BSP Female 28-102-016

## ALUMINIUM TRIGGER NOZZLE - SLUMP TYPE

For high pressure water eg. Concrete trucks



Size (Inches)	Material & Thread
1	Aluminium BSP Female 28-110-016









**iMOTION**

Delivering a world-class customer-first approach providing excellence and expertise in industrial products, solutions and services.

**iMOTION**  
FLUID POWER SOLUTIONS

Integrated solutions by specialists in fluid power, hydraulic, pneumatic and flow technologies.

**iMOTION**  
ENGINEERING & SERVICES

Specialist design and engineering, manufacturing, repair and maintenance services.

Anytime.Anywhere.  
**Always Here.™**



**Find a location near you!**

Scan the QR Code to find out more  
or visit [Motion.com.au](http://Motion.com.au)