

Fire Season 2025/2026



BE PREPARED THIS FIRE SEASON

**SUPPLIED
FULLY
ASSEMBLED
READY
TO USE**



FIRE HOSE REEL

For use on fire hose reels and in fire fighting applications

Part Number 1	Part Number 2	Hose ID mm	Hose OD mm	Weight kg/m	Max W.P. psi (mpa)	Length mtrs
60-000-9040-018FH	AIPSR1836F	19	26	0.36	145	34
60-000-9040-025FH		25	33	0.55	145	20
60-000-9040-018FHB*		19	26	0.36	145	34
60-000-9040-025FHB*		25	33	0.55	145	20
60-000-9060-025FH		25	33	0.55	145	34

*Supplied with Brass Nozzle.

SAFETY YELLOW HOSE REEL

Premium Air/Water hose for heavy duty and general purpose applications

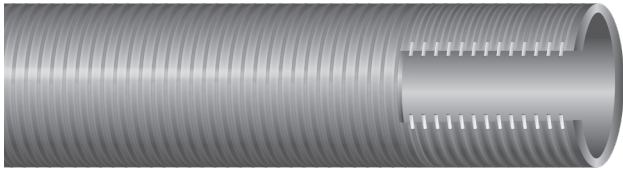
Part Number	Hose ID mm	Hose OD mm	Weight kg/m	Max W.P. psi (mpa)	Length mtrs
60-000-9040-018SY	19.0	29.0	0.44	145	18

FIRE FIGHTING HOSE & FITTINGS

PVC SUCTION HOSE

For the movement of waste materials, water, slurries, some chemicals, granules, gravel and sand.

TEMPERATURE: -5°C to +60°C



Part Number 1	Part Number 2	Hose ID mm
02-000-025-CUT	PFGS25	25.4
02-000-038-CUT	PFGS38	38.1
02-000-051-CUT	PFGS51	50.8

ECLIPSE GENERAL PURPOSE HOSE

Is an economical general purpose air and water hose ideally suited for use across a wide range of industrial and construction applications.

TEMPERATURE: -40°C to +100°C



Part Number	Hose ID mm
08-020-012-100	12.7
08-020-019-100	19.1
08-020-025-100	25.4

LIGHT DUTY PVC BLUE LAYFLAT HOSE

Suitable for temporary water supply or drainage of location with relatively small differences in elevation and light duty dewatering applications.

TEMPERATURE: -20° to +60°C



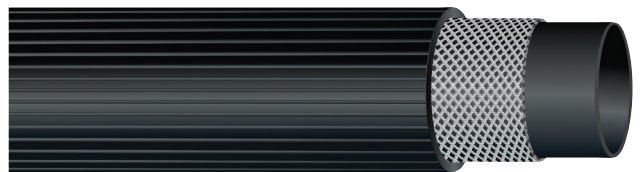
Part Number 1	Part Number 2	Hose ID mm
04-005-025-100	LFH25B100	26.0
04-005-038-100	LFH38B100	41.0
04-005-051-100	LFH50B100	53.0
04-005-9051-020CEC*	LFH50BLCE	53.0

*Fitted assembly includes 20MTR of hose C/W male and female camlocks crimped.

PVC FIRE REEL HOSE

For use on fire hose reels and in fire fighting applications.

TEMPERATURE: -5°C to +60°C



Part Number 1	Part Number 2	Hose ID mm	Lengths metre
00-080-019-CUT	PFRH20	19.1	20, 36 & 100
00-080-025-CUT	PFRH25	25.4	20, 30 & 100

HEAVY DUTY PVC RED LAYFLAT HOSE

For use on fire hose reels and in fire fighting applications.

TEMPERATURE: -5°C to +60°C



Part Number 1	Part Number 2	Hose ID mm
04-015-025-100	LFH25R100	26
04-015-038-100	LFH38R100	40
04-015-051-100	LFH51R100	53
04-015-9051-020CEC	LFH50RLCE	53

*Fitted assembly includes 20MTR of hose C/W male and female camlocks crimped.

PVC FIRE REEL HOSE KIT

For use on fire hose reels and in fire fighting applications. Assembly supplied with Brass Nut and Nozzle.



Part Number 1	Part Number 2
00-080-9019-020BPW	
00-082-9019-036BCOBN	FHA2020*
00-080-9019-036BPW	
00-082-9025-020ACCAWD	FHA2036***
00-080-9025-020BPW	

*Assembly includes 3/4" Black PVC fire reel hose x 20mt, 3/4" brass click on fittings and heavy duty spray nozzle.
 **Assembly includes 3/4" Yellow PVC hose x 20mt, 3/4" brass click on fittings and heavy duty spray nozzle.
 ***Assembly includes 3/4" Black PVC fire reel hose x 36mt, 3/4" brass click on fittings and heavy duty spray nozzle.

PVC SUCTION HOSE KITS

For use on fire hose reels and in fire fighting applications. Assembly supplied with Brass Nut and Tail.



Part Number
02-000-9038-006FKB
02-000-9038-010FKB
02-000-9051-006FKB
02-000-9051-010FKB

PERFORMER HOSE REELS

Complete with 3/4 inch Stainless Steel BSP Swivel.



Part Number 1	Part Number 2
60-000-040-018	AIPSR1840
60-000-060-018	
60-000-040-018-016	

AUSTRALIAN STANDARD FIXED FIRE HOSE REEL KIT

With years of development behind it this Australian Standard Fixed Hose Reel is widely regarded as one of the best and most reliable in the Australian Market.



Part Number 1	Part Number 2
60-050-036-012	FHR1936
60-050-030-016	FHR2530

COMPLETE FIRE KITS



The **00-089-900-001P**
Fire Fighting Hose Kit includes:

1. Suction Hose - 1 x 4m x 38mm
2. Delivery Hose - 2 x 6m x 19mm
3. Poly Nuts & Tails, Nozzles, Strainer

The **00-089-900-001B/SFK46**
Fire Fighting Hose Kit includes:

1. Suction Hose - 1 x 4m x 38mm
2. Delivery Hose - 2 x 6m x 20mm
3. Poly Strainer, Nozzle & Brass Fittings

The **00-089-900-003B**
Fire Fighting Hose Kit includes:

1. Suction Hose - 1 x 6m x 38mm
2. Delivery Hose - 2 x 10m x 19mm
3. Brass Nuts & Tails, Nozzles, Strainer

The **00-089-900-003A/HDFK610**
Fire Fighting Hose Kit includes:

1. Suction Hose - 1 x 6m x 38mm
2. Delivery Hose - 2 x 10m x 20mm
3. Poly Strainer, Nozzle & Brass Fittings

The **00-089-900-003P/PFK620**
Fire Fighting Hose Kit includes:

1. Suction Hose - 1 x 6m x 38mm
2. Delivery Hose - 1 x 20m x 19mm
3. Brass Nuts & Tails, Nozzles, Strainer

FIRE HOSE REEL BARREL NOZZLE

Includes Composite Hose Tail



Part Number	Size inch
28-004-012	3/4
28-004-016	1

BRASS JET NOZZLE

With Hose Tail



Part Number 1	Part Number 2	Size inch
28-020-012	BHRN20	3/4
28-020-016	BHRN25	1

NYLON FOG NOZZLE

With Hose Tail



Part Number	Size inch
28-002-012	3/4
28-002-016	1

VIPER JET NOZZLES - PLASTIC

Adjustable Straight or Fog spray
• 360 L p/min



Part Number	Size inch
28-003-024	1-1/2

RED POLY SPRAY NOZZLES



Part Number 1	Part Number 2	Size inch
28-001-016	SHN25	1
28-001-024	LHN38	1-1/2
28-005-012	HRN20	3/4

RING (NUT) & TAIL BRASS P5

Female BSP Nut x Hose Tail



Part Number 1	Part Number 2	Size BSP X H/T
22-430-012-016	BNTM2520	1 x 3/4
22-430-016-016	BNTM2525	1 X 1
22-430-024-024	BNTM3838	1-1/2 X 1-1/2

POLY STRAINERS

Ideal for stopping debris & foreign matter from entering lines in domestic water applications.



Part Number 1	Part Number 2	Size inch
28-300-024	PST40	1-1/2
28-300-032	PST50	2

RING (NUT) & TAIL POLYPROPELENE (PPN)

Female BSP Nut x Hose Tail



Part Number 1	Part Number 2	Size BSP X H/T
27-101-012-016	PNT2520	1 x 3/4
27-101-016-016	PNT2525	1 X 1
27-101-024-024	PNT4040	1-1/2 X 1-1/2

BALL VALVE SPRAY NOZZLE



Part Number 1	Part Number 2	Size kg
25-160-008		1/2
25-160-012	BNHT20	3/4
25-160-016	BNHT25	1

CLAMP PERFORMER W/DRIVE SOLID BAND S/STEEL



These W4 Stainless Steel Solid Band Wormdrive Clamps provide superior design and proven reliability to the user.

Also available with a removable safety collar to prevent screwdriver slip injuries they can be used for industrial, hardware, automotive and general applications. All Performer Clamps have been independently tested.

CONSTRUCTION: W4 S/Steel Solid Band (band width, mm)

Part Number	Clamp Range mm
40-030-027	16-27
40-030-032	20-32
40-030-053	35-53
40-030-057	40-57

HEAVY DUTY ADJUSTABLE SPRAY NOZZLE

Commercial grade professional nozzle with protective rubber moulding, for heavy duty applications

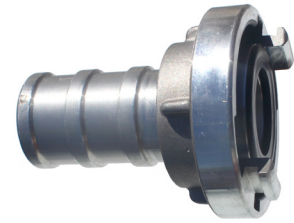


Part Number 1	Part Number 2	Size mm
28-080-001	RB7302C	18

ALUMINIUM STORZ COUPLINGS

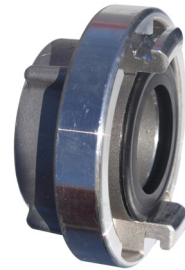
HOSE COUPLINGS

Part Number 1	Part Number 2	Size
		mm
23-100-016-012	SZHC2520	25mm Storz x 20mm Hosetail
23-100-016-016	SZHC2525	25mm Storz x 25mm Hosetail
23-100-024-024	SZHC3838	38mm Storz x 38mm Hosetail
23-100-032-024	SZHC5038	50mm Storz x 38mm Hosetail
23-100-032-032	SZHC5050	50mm Storz x 50mm Hosetail
23-100-040-024	SZHC6538	65mm Storz x 38mm Hosetail
23-100-040-032	SZHC6550	65mm Storz x 50mm Hosetail
23-100-040-040	SZHC6565	65mm Storz x 65mm Hosetail
23-100-048-048	SZHC7575	75mm Storz x 75mm Hosetail



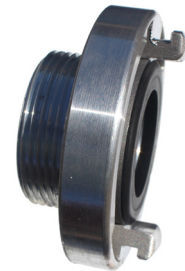
ADAPTOR FEMALE THREAD

Part Number 1	Part Number 2	Size
		mm
23-102-016-012	SZAF2520	25mm Storz x 20mm Female BSP
23-102-016-016	SZAF2525	25mm Storz x 25mm Female BSP
23-102-024-024	SZAF3838	38mm Storz x 38mm Female BSP
23-102-032-032	SZAF5050	50mm Storz x 50mm Female BSP
23-102-040-032	SZAF6550	65mm Storz x 50mm Female BSP
23-102-040-040	SZAF6565	65mm Storz x 65mm Female BSP
23-102-048-048	SZAF7575	75mm Storz x 75mm Female BSP



ADAPTOR MALE THREAD

Part Number 1	Part Number 2	Size
		mm
23-101-016-012	SZAM2520	25mm Storz x 20mm Male BSP
23-101-016-016	SZAM2525	25mm Storz x 25mm Male BSP
23-101-024-024	SZAM3838	38mm Storz x 38mm Male BSP
23-101-032-032	SZAM5050	50mm Storz x 50mm Male BSP
23-101-040-032	SZAM6550	65mm Storz x 50mm Male BSP
23-101-040-040	SZAM6565	65mm Storz x 65mm Male BSP
23-101-048-048	SZAM7575	75mm Storz x 75mm Male BSP



STORZ BLANKING CAP

Part Number 1	Part Number 2	Size
		mm
23-103-016	SZBC25	25mm Storz Blanking Cap (with chain)
23-103-024	SZBC38	38mm Storz Blanking Cap (with chain)
23-103-032	SZBC50	50mm Storz Blanking Cap (with chain)
23-103-040	SZBC65	65mm Storz Blanking Cap (with chain)
23-103-048	SZBC75	75mm Storz Blanking Cap (with chain)





iMOTION®

Delivering a world-class customer-first approach providing excellence and expertise in industrial products, solutions and services.

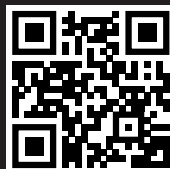
iMOTION
FLUID POWER SOLUTIONS

Specialists in Fluid Power Solutions tailored to keep your equipment moving.

iMOTION
ENGINEERING & SERVICES

Specialist design and engineering, manufacturing, repair and maintenance services.

Anytime. Anywhere.
Always Here.™



Find a location near you!

Scan the QR Code to find out more
or visit [Motion.com.au](https://www.motion.com.au)